



# INGOT

www.silverrangeresources.com

TSX-V:SNG

- Low-sulfidation quartz veins
- Samples up to **585 g/t Ag** with 7 of 15 samples returning greater than 100 g/t Ag.
- Road accessible on BLM land in Clark County.



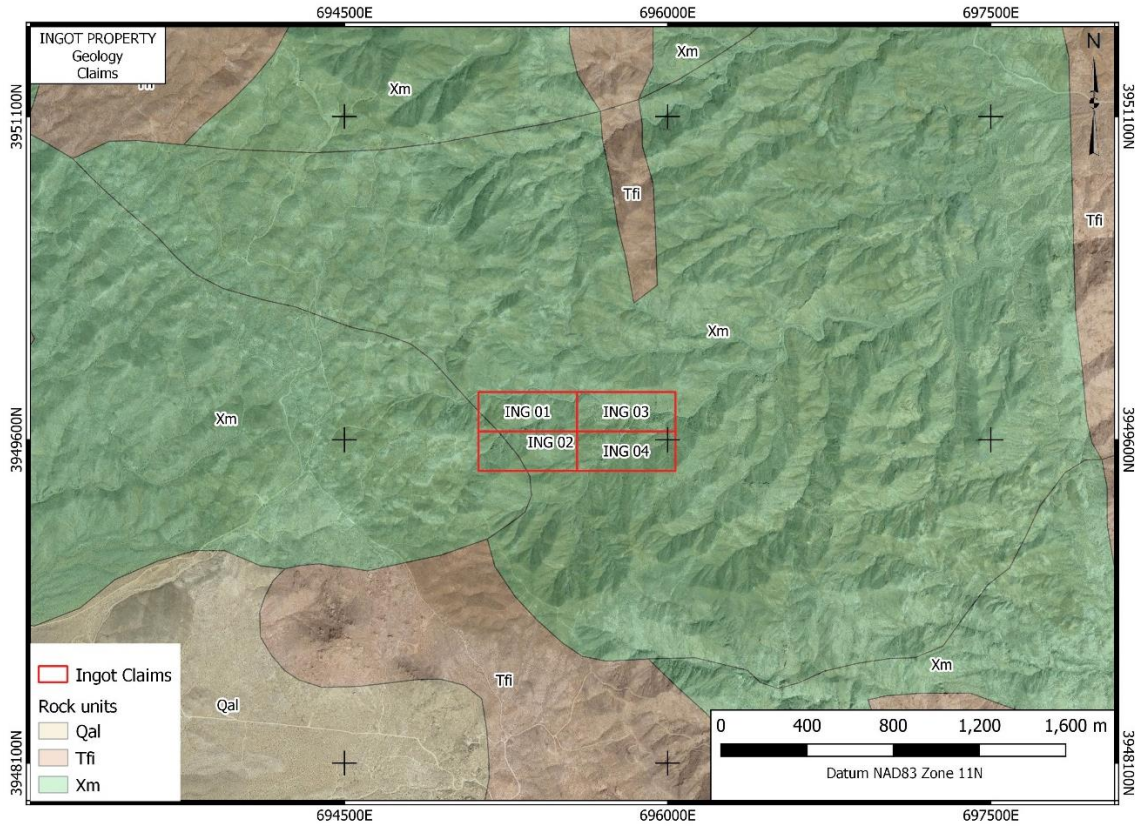
## LOCATION & ACCESS

The Ingot Property is centred at  $35^{\circ} 40' N$   $114^{\circ} 50.4' W$  in Clark County. It is 55 km SE of Las Vegas and 24 km NE of Searchlight. The property is accessible by 4WD trails branching from the Route 95 10.7 km west of the property. The property consists of 4 Federal lode claims staked in Section 21, Township 26S, Range 64E on BLM land. There are no special surface land use restrictions on these lands.

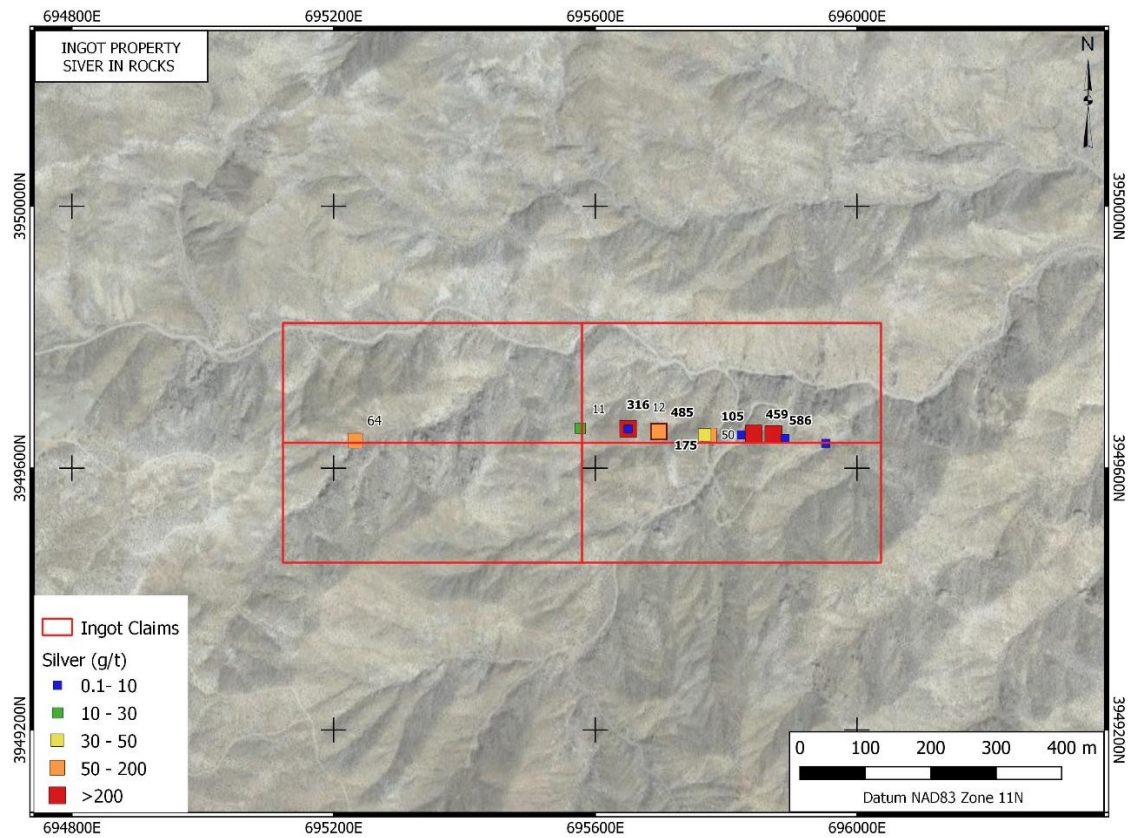
## EXPLORATION HISTORY

The Oro Plata (Belmont-Phoenix) developed as part of the Colorado-Eldorado mining district first discovered in 1861. Mining on the property likely occurred intermittently until the 1970's. No evidence of modern

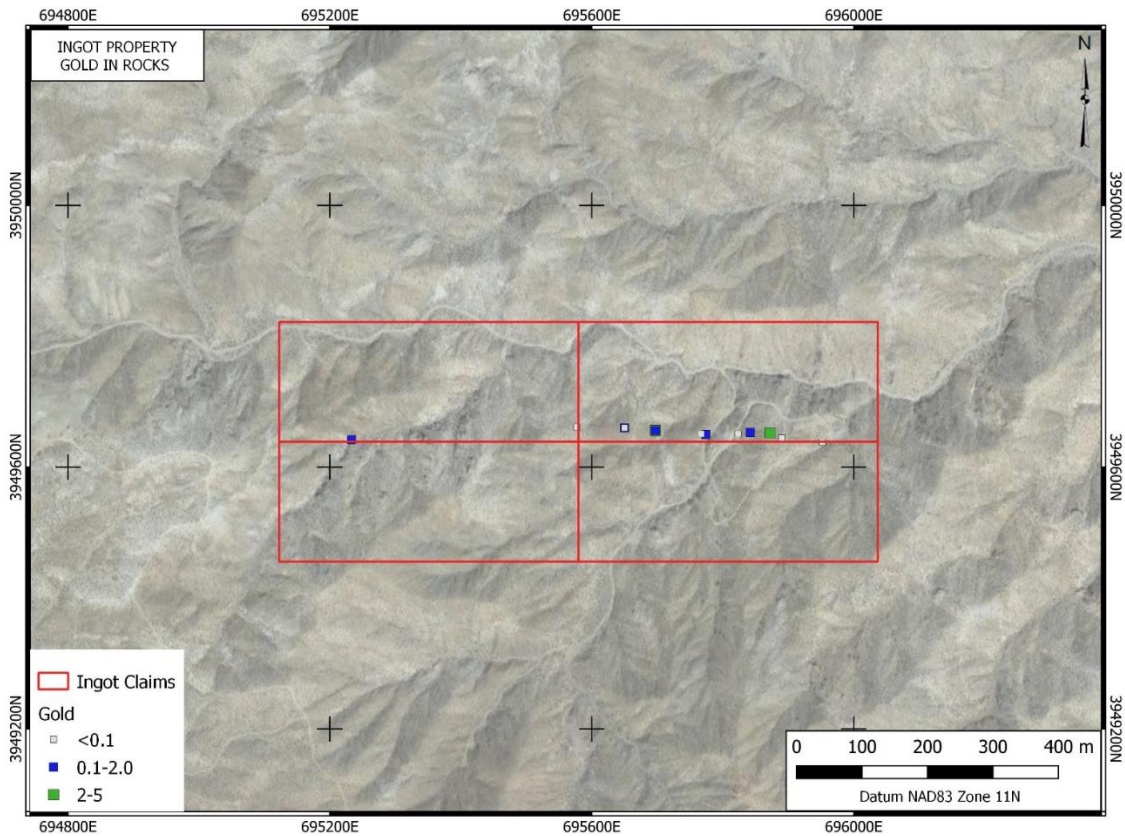
exploration can be observed or has been documented on the property.



**Ingot Property geology**



**Silver in Rock Samples**



**Gold in Rock Samples**



## **GEOLOGY & ECONOMIC MINERALIZATION**

The property is underlain by Precambrian metasediments and Tertiary felsic volcanics. Silver occurs in low sulphidation quartz veins, mined at a small scale at several locations on the property. Initial grab and chip sampling by Silver Range returned up to **585 g/t Ag** with 7 of 15 samples returning greater than 100 g/t Ag.

## **PROPOSED EXPLORATION PROGRAM**

Silver Range intends to conduct geological mapping, sampling and soil geochemical surveys on the Ingot Property to define the extent of the system.

**THIS PROPERTY IS AVAILABLE FOR OPTION OR JOINT-VENTURE.**

**Mike Power** *President & CEO*  
[mpower@silvrangeresources.com](mailto:mpower@silvrangeresources.com)  
702-972-7496

**John Gilbert** *Vice President*  
[jgilbert@silvrangeresources.com](mailto:jgilbert@silvrangeresources.com)  
802-222-7436