



# Tonto del Pueblo

www.silverrangeresources.com

TSX-V:SNG

- Low sulphidation epithermal mineralization
- High grade gold up to **65.5 g/t Au** with 18 of 54 rock samples returning greater than **5 g/t Au**.
- Widespread gold-in-soil geochemical response
- Geologic mapping, geochemical and VLF-EM surveys completed to date.



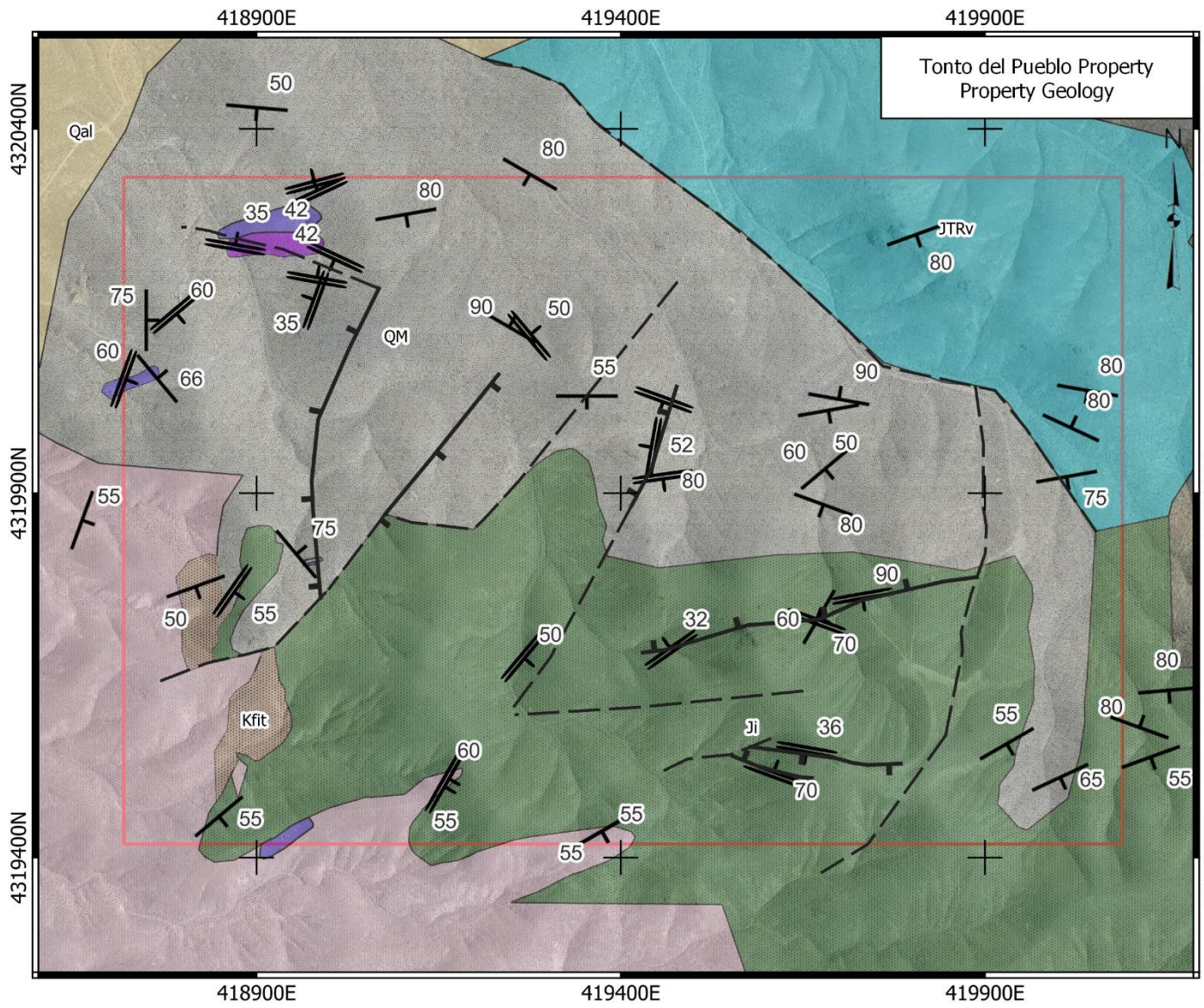
## LOCATION & ACCESS

The Tonto del Pueblo Property is centred at 39° 02' N 117° 56' W in Townships 13N and 14N, Range 36E, northern Nye County. The property is approximately 17 km north of Gabbs and can be reached by road with a 4x4 vehicle. Access to the property is via a county road 35 miles south of Middlegate along SR 361. It is approximately 7 miles from SR 361 to the property. The Tonto del Pueblo Property consists of 15 Federal Lode Claims staked on BLM land with no surface impairments.

## EXPLORATION HISTORY

Silver, gold and lead were discovered at the Illinois Mine, approximately 5 km southeast of the property, in 1875. Following initial production from 1875 through 1881, this mine produced intermittently until 1905 when it was rejuvenated by Colorado mining interests from 1905 through 1914. During this period a 100 ton per day smelter was built, a town ("Bob") was platted and the property developed on 7 levels via a 1200 foot shaft.

Production ceased in 1914 due to water ingress in the deeper levels of the mine but leasing operations continued there intermittently until the 1950's. The San Rafael Mine, approximately 3 km WNW of the Tonto del Pueblo Property was discovered in 1921 by B.M. Clay. By 1925, the mine was shipping 100 tons per week of ore grading 36 OPT Ag and 1 OPT Au. Operations became intermittent at the mine during the 1930's but high grading by leasers persisted until the 1950s. The Tonto del Pueblo Property is 13 km southwest of Endeavour Silver's Bruner Mine, the most significant recent development in the immediate area. Silver Range staked Tonto del Pueblo in 2021, following up public domain sample results.



Tonto del Pueblo Property  
Property Geology

**Structure**

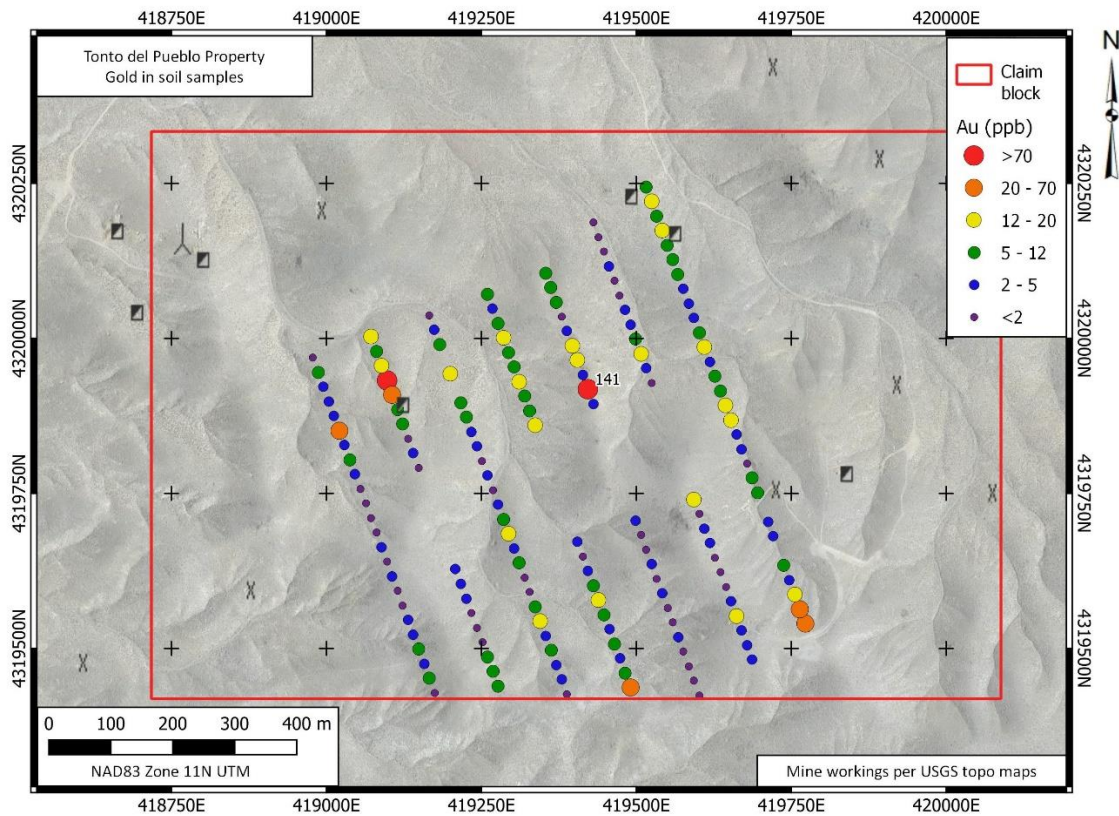
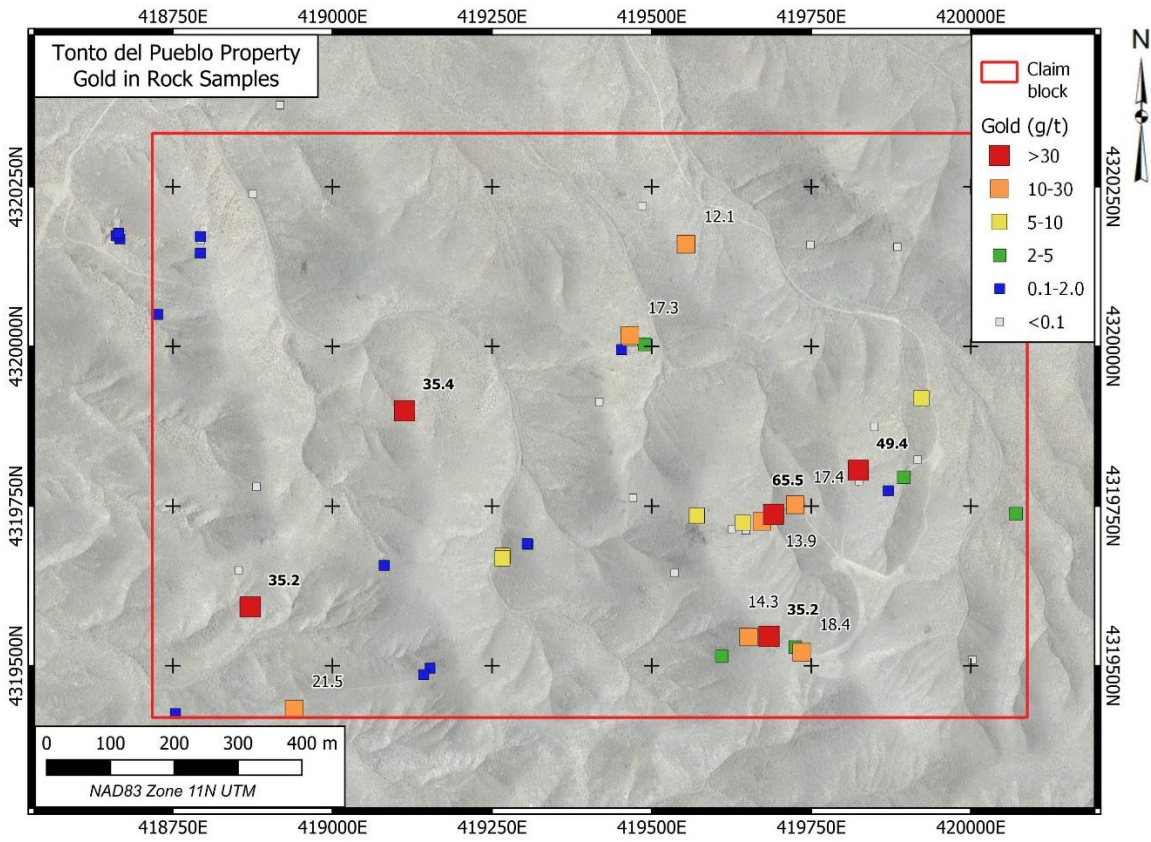
- Bedding
- Vein
- Known fault
- Inferred fault

**Lithology**

- Gabbro/Qtz Gabbro
- Jfi - Granitic rocks
- Ji - Porphyritic Quartz diorite
- Jmi - Quartz diorite/monzonite
- JTRv - Dunlap fm, conglomerate
- Tourmaline porphyritic granite
- Qal - alluvium
- QM - Excelsior Fmn Qtzite, sltst. cht.
- Claims

0 100 200 300 400 m

NAD83 Zone 11N UTM



## PROPERTY GEOLOGY & MINERALIZATION

Tonto del Pueblo is underlain by Mesozoic rocks of the Walker Lake – Pamlico-Luning terrane including Triassic Excelsior and Dunlap Formation metasediments. These have been intruded by later Mesozoic quartz diorite and granitic rocks. Tonto del Pueblo hosts low sulphidation epithermal gold mineralization, possibly sourced from any of four Oligocene volcanic centres within 20 to 40 km of the property (the Desatoya, Gabbs, Arc Dome and Elevenmile Canyon caldera complexes). This differs from mineralization at the nearby Illinois and San Rafael Mines which is dominantly silver-lead and hosted by veins in igneous rocks. At Tonto del Pueblo, high grade gold occurs in fault-controlled veins, shears and breccias within metasediments and igneous rocks. Rock sampling by Silver Range has returned gold assays up to **65.5 g/t Au** from grab & chip samples collected from dump piles and exposures in exploration workings. Eighteen of 54 samples collected to date on the property have returned gold assays in excess of **5 g/t Au**. Silver Range has completed soil geochemical, VLF-EM and airborne magnetic field surveys over the property. Gold appears to be hosted in a variety of structural locations within the Mesozoic basement rocks in a setting similar, to that found near Beatty at Anglo Gold Ashanti's Sterling and Mother Lode Deposits.



(a) Vein exposure.

(b) Quartz after calcite texture

(c) Cockade texture in breccia

## PROPOSED EXPLORATION PROGRAM

Silver Range intends to conduct additional geologic mapping, soil sampling and geophysical surveys followed by trenching to define drill targets at Tonto del Pueblo.

***THIS PROJECT IS AVAILABLE FOR OPTION, JOINT VENTURE OR SALE.***