

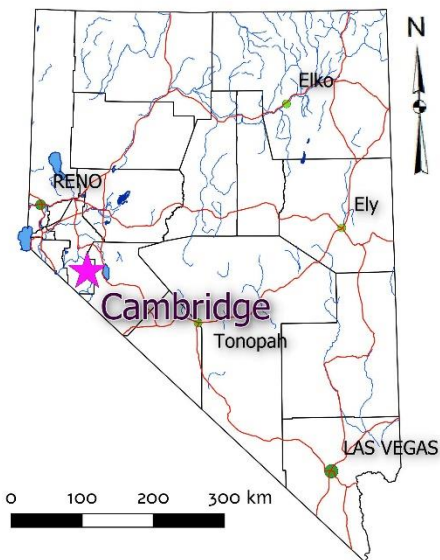


# CAMBRIDGE

www.silverrangeresources.com

TSX-V:SNG

- **High grade, shear-hosted mesothermal quartz-hematite-limonite veins carrying pyrite, galena, tetrahedrite and chalcopyrite.**
- **Vein-hosted gold mineralization NNW striking shears, individually with up to 1,500 m strike length.**
- **High grade gold in grab rock samples: 29% > 5 g/t Au with highest assay of 80.0 g/t Au. Coincident strong gold in soil anomalies.**
- **Road accessible near East Walker Road in Lyon County, 33 km south of Yerington.**

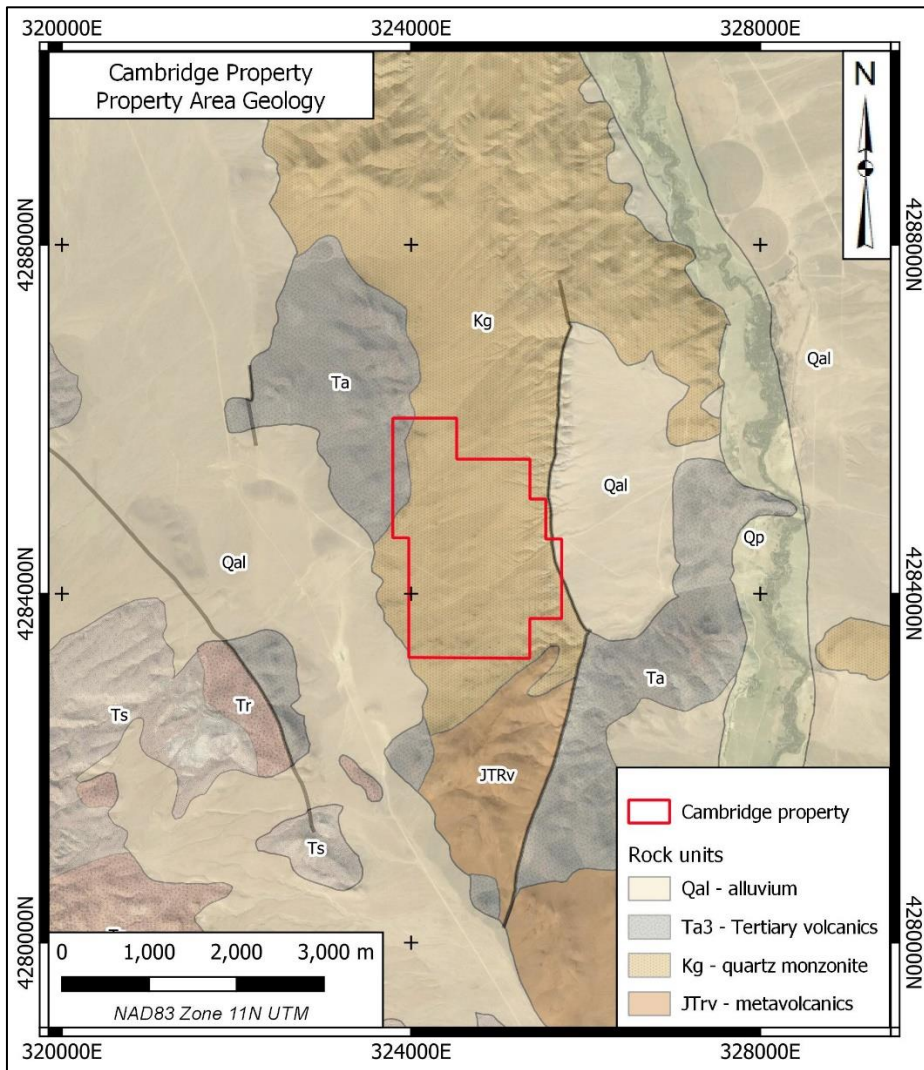


## LOCATION & ACCESS

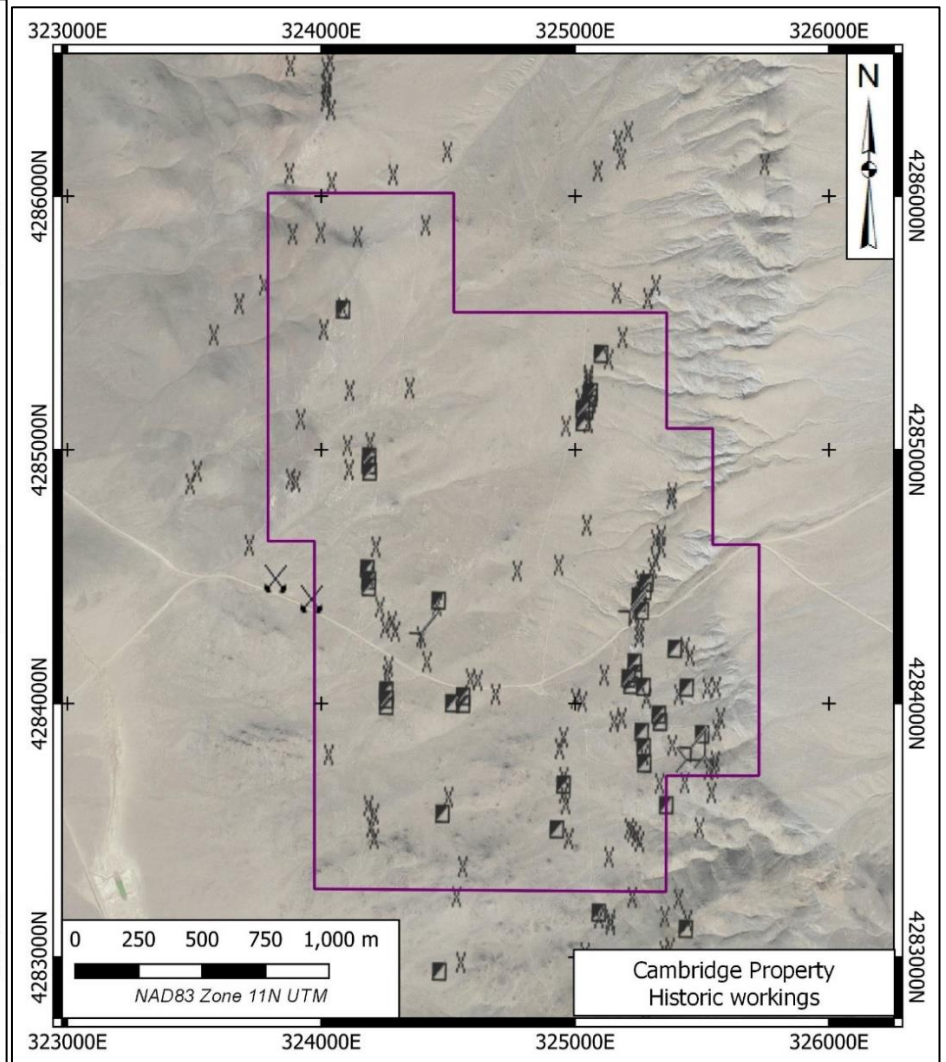
The Cambridge Property is located 33 km south of Yerington in Lyon County, NV. It consists of 51 Federal Lode Claims staked in Sections 25 & 36 Township 10N Range 26E, MDM and Sections 30,31 Township 10N Range 27E, MDM. The property is readily accessible by road from State Route 3C and the East Walker Road which runs across the southern boundary of the claims.

## EXPLORATION HISTORY

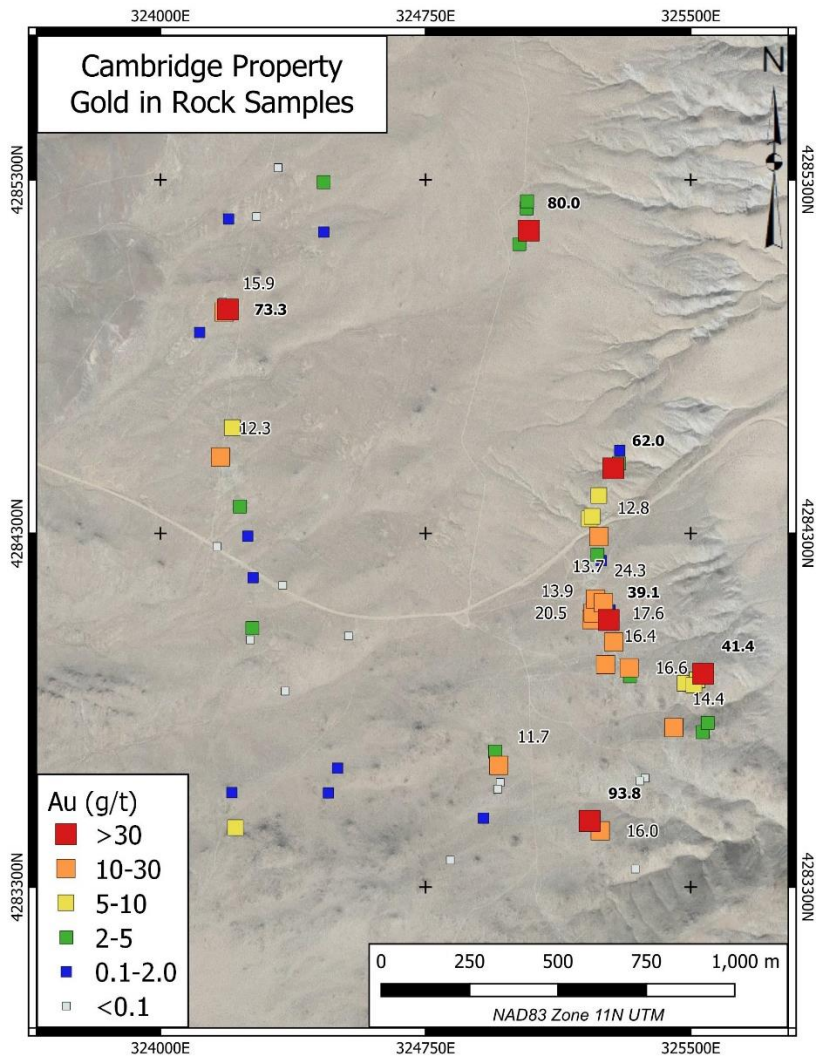
Mining in the district dates from the 1860's but took off when Henry Blasdel, Nevada's first state governor, purchased the Cambridge Mine in the southeastern portion of the Cambridge Property in the late 1870's. Development at that time consisted of a shaft sunk to 250' and a comparative amount of drifting on two levels. Approximately 10,000 tons of ore grading approximately 0.3 OPT Au was extracted during this period and processed at a nearby mill on the Walker River. The operation shut down in the late 1800's and was briefly reactivated by the Cambridge Mining Corp. from 1940 to 1942, closing when all gold mining was shut down by order of the Federal Government. Ernest Rink, the mill foreman, staked a number of properties in the area including the Contact Group (Price Lode) which was explored briefly in the 1960's. There is no record of recent major company activity in the area. Silver Range staked the Price Lode workings adjacent to the Cambridge Mine in 2016 and Auburn Gold Mining LLC staked the Cambridge Mine in 2019. The two companies formed a joint-venture to consolidate and explore the district in 2021.



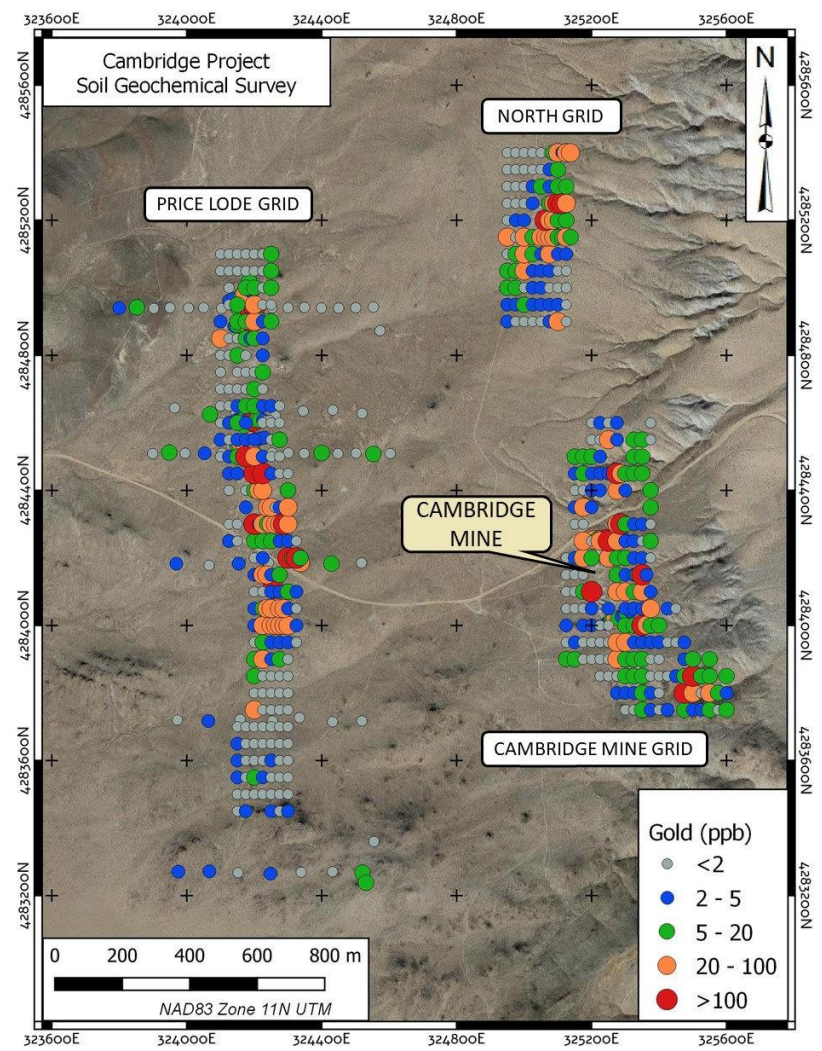
Property area geology



Historic workings



Gold in rock samples



Gold in soil samples

## GEOLOGY & ECONOMIC MINERALIZATION

The Cambridge Property is underlain by Cretaceous quartz monzonite overthrust by Tertiary andesite in the northwestern corner of the property. Outcrop is scarce on the property but numerous excavations show only shallow overburden. The quartz monzonite is medium to coarse grained and is cut by north to north-northwest trending, apparently steeply-dipping faults or shears which host the gold mineralization. The mineralization located to date consists of quartz veins up to 20 cm wide in the few exposed areas and reportedly up to 2.0 m in some mine workings. The quartz is coarse grained, locally laminated and carries disseminated pyrite, pyrrhotite, chalcopyrite and rare galena, tetrahedrite and amorphous black sulphides. Most sulphides are weathered and pyrite boxworks, malachite, azurite and rare yellow cerussite together with limonite and hematite are more common than fresh sulphides. The selvages of the veins consist of clays but the surrounding bedrock is not altered to a great extent distant from the veins. There are no volcanic centres near the property and the style of mineralization is interpreted to be mesothermal. Grab sampling on the property to date has recovered 68 samples with 20 (29%) assaying greater than **5 g/t Au** and the best sample returning **80.0 g/t Au**. The Cambridge Mine was noted for visible gold and this been recovered from waste dumps samples at the Cambridge Mine.

An airborne total magnetic field and radiometric survey was conducted on the property in 2020. The total magnetic field data in particular delineated trends coincident with known bedrock gold mineralization in the western portion of the property. Soil surveys were completed in 2021 on three grides covering the western Price Lode, eastern Cambridge Mine and northeastern North Zones. Numerous intersections with gold-in-soil samples greater than 100 ppb Au were mapped.



## PROPOSED EXPLORATION PROGRAM

Silver Range and Auburn Gold Mining intend to conduct trenching define drill targets property.

***THIS PROPERTY IS AVAILABLE FOR OPTION OR JOINT-VENTURE***