



# The High Grade Precious Metals Prospect Generator



Property Portfolio  
January 2024

Certain information regarding the Company contained herein may constitute forward-looking statements within the meaning of applicable securities laws. Forward-looking statements may include estimates, plans, expectations, opinions, forecasts, projections, guidance or other statements that are not statements of fact. Although the Company believes that the expectations reflected in such forward-looking statements are reasonable, it can give no assurance that such expectations will prove to have been correct. The Company cautions that actual performance will be affected by a number of factors, many of which are beyond the Company's control, and that future events and results may vary substantially from what the Company currently foresees. Discussion of the various factors that may affect future results is contained in the Company's Annual Report which is available at [www.sedar.com](http://www.sedar.com). The Company's forward-looking statements are expressly qualified in their entirety by this cautionary statement.

#### **The Keg Deposit NI 43-101 disclaimer**

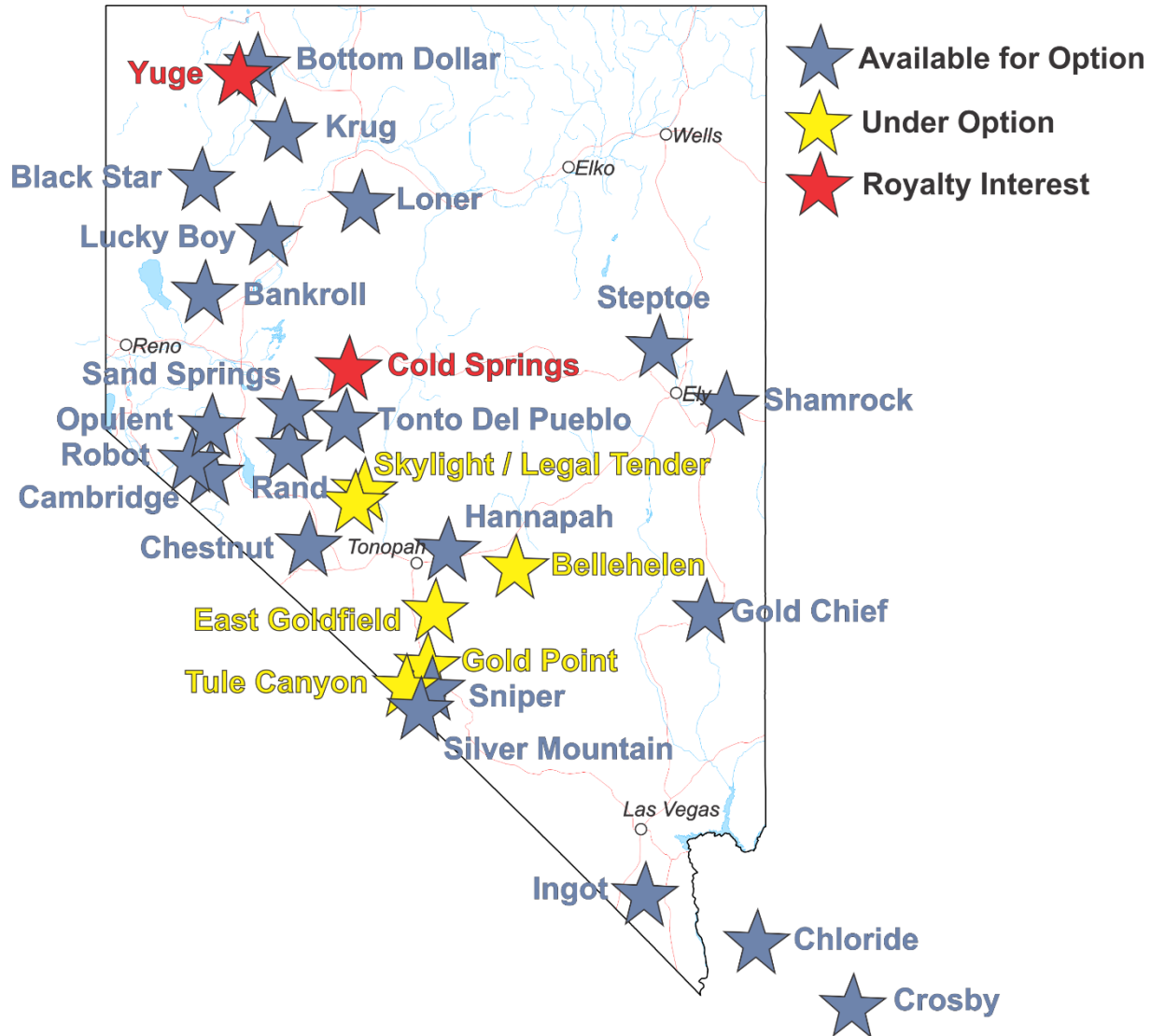
At a 16 g/t silver cut-off, the Keg inferred resource is 39.76 million tonnes grading 30.25 g/t silver, 0.26% lead, 0.77% zinc and 0.15% copper. For further details see technical report entitled "Geology, Mineralization, Geochemical Surveys, Diamond Drilling, Metallurgical Testing and Mineral Resources at the Keg Property" dated December 19, 2012 and amended May 27, 2013 and filed on SEDAR.

#### **The Mel Main Zone Deposit NI 43-101 disclaimer**

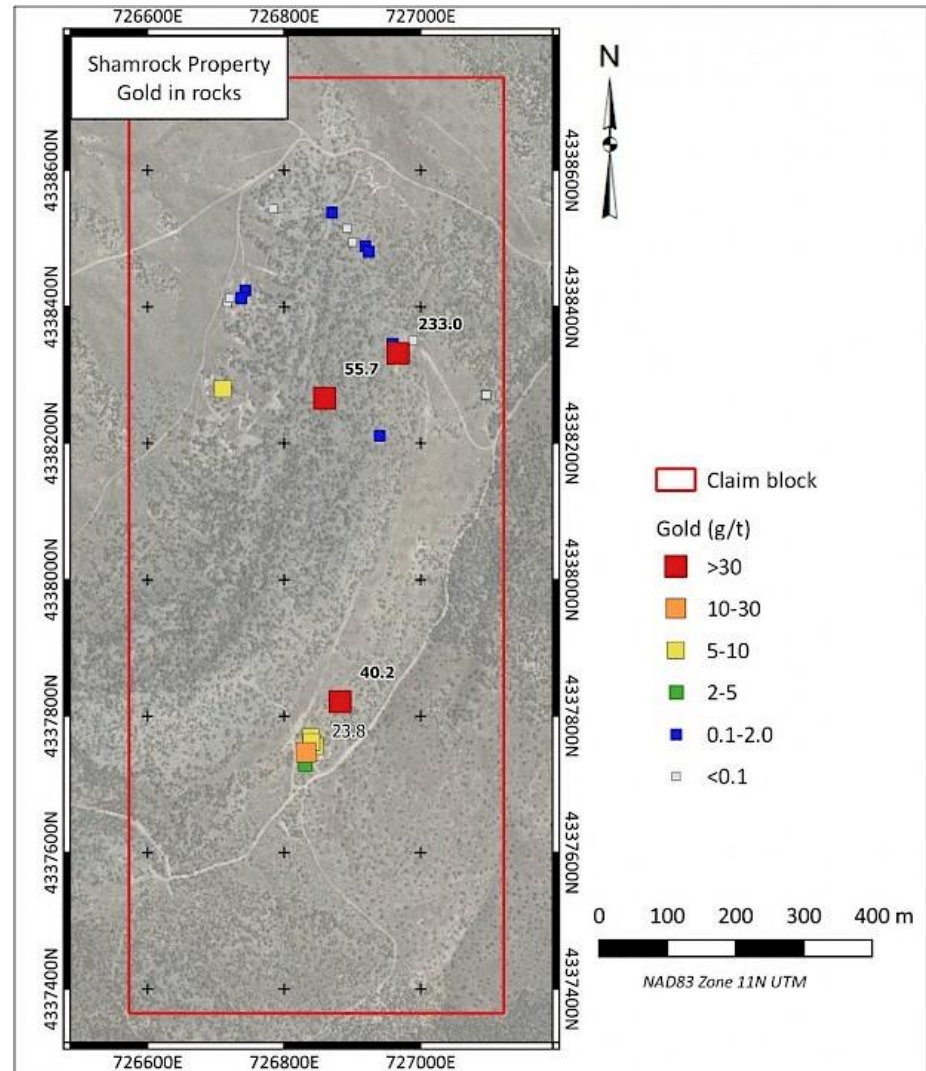
The Mel Main Zone hosts an inferred resource of 5.38 million tonnes grading 6.45% zinc, 1.85% lead and 44.79% barite (BaSO<sub>4</sub>), at a cut-off grade of 5.0% zinc-equivalent. Zinc-equivalence was calculated using metal prices of US\$0.89/lb zinc and US\$0.96/lb lead and assuming 90.3% zinc recovery and 97.7% lead recovery. Further details of the estimation procedure are available in a NI 43-101 report authored by Giroux Consultants Ltd. and H. Leo King, P. Geo., dated November 12, 2014 and filed on SEDAR.

All technical information contained in this presentation pertaining to projects located in Yukon has been approved by Matthew R. Dumala, P.Eng., a geological consultant to Silver Range Resources and qualified person for the purposes of NI 43-101.

All technical information contained in this presentation pertaining to projects located in NWT, Nunavut, Nevada and Arizona has been approved by Michael Power, CPG., President and C.E.O of Silver Range Resources and qualified person for the purposes of NI 43-101.



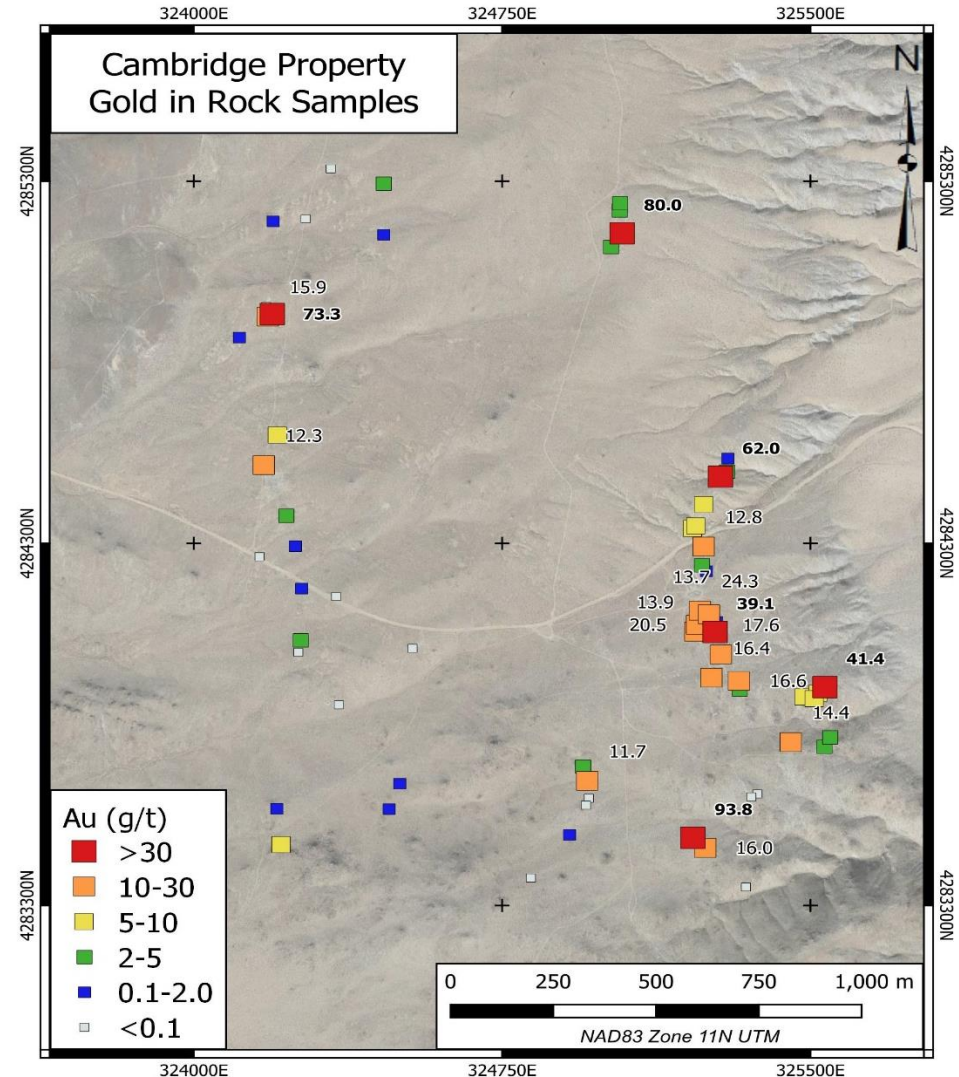
- Carbonate replacement deposit (CRD) target
- 50 km east of Ely, NV
- Intermittent past production: 1876-1948
- Recent sampling: **233 g/t Au**, **1,520 g/t Ag** and **4.03% Cu**



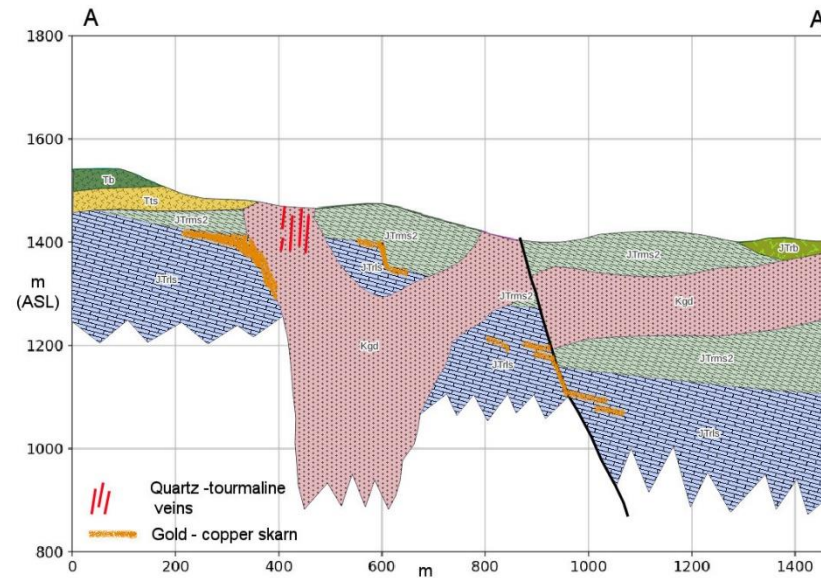




- Mesothermal gold near Yerington, NV
- Intermittent production 1870's-1942
- Samples to **80 g/t Au** & 3.2 m @ **14.65 g/t Au**
- Extensive vein system; individual veins up to 1.5 km long

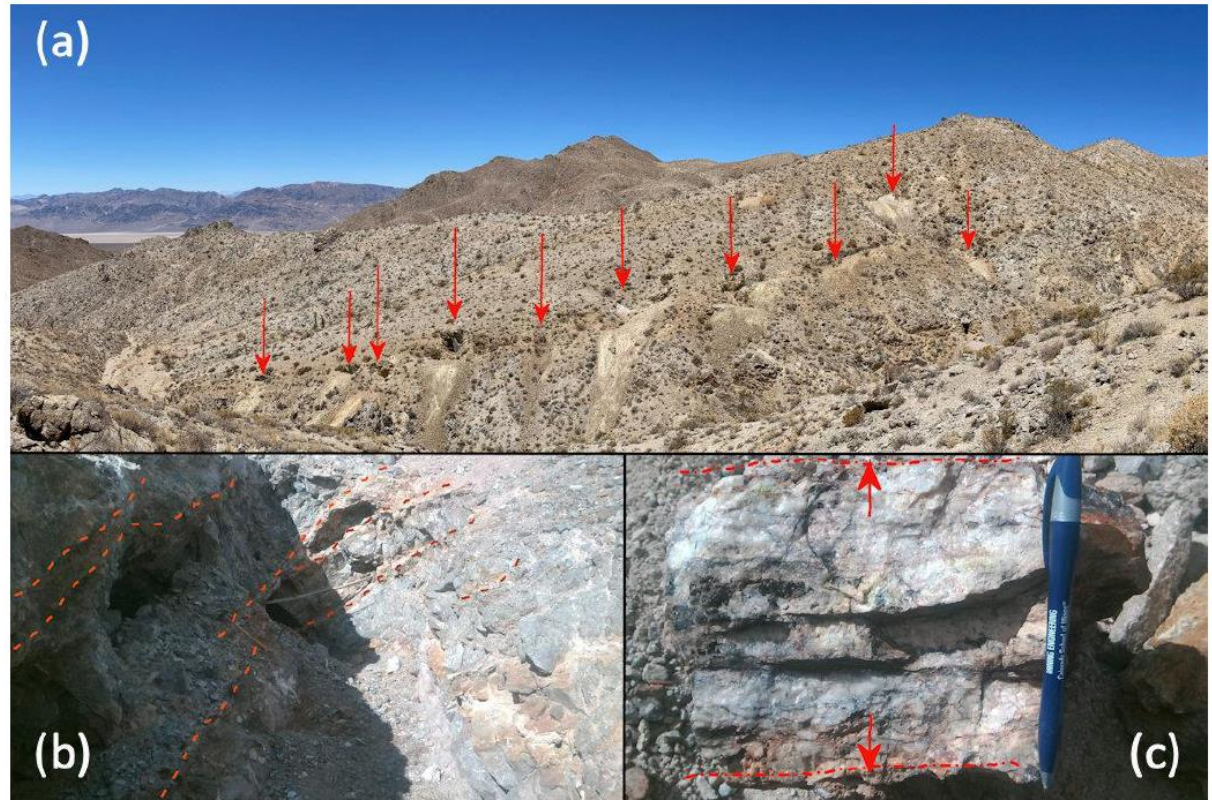


- 42 km east of Fallon, NV
- Gold-copper skarn & intrusive related veining
- Surface samples to **10.1 g/t Au & 3.5% Cu**
- Drill results to 3.05 m @ 4.8 g/t Au
- Recent mapping & airborne magnetic surveys



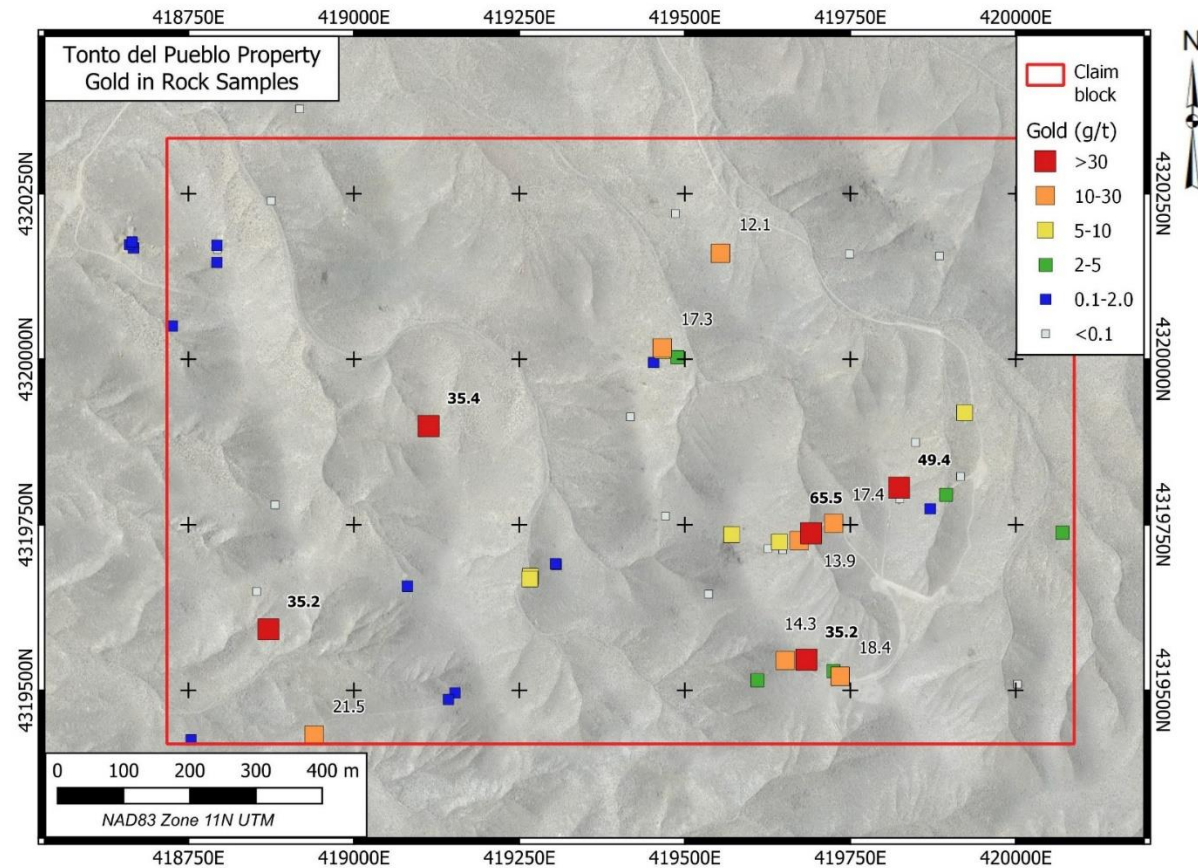


- 57 km southwest of Goldfield, NV
- Mesothermal or deep epithermal silver
- Intermittent high grading since 1917
- Underground workings at Old Cabin and Gulch Showings
- Recent sampling to **3,270 g/t Ag** with 7 / 16 > 100 g/t Ag



(a) Gulch showing with historic workings indicated by arrows. (b) Stacked, planar veins in a working at the Old Cabin showing, indicated by orange lines. (c) Extensional vein detail – Old Cabin Showing. Mineralized quartz grades > 100 g/t Ag.

- Low-sulphidation gold mineralization
- 17 km north of Gabbs, NV
- Grab samples to **65.5 g/t Au** /18 of 54 > 5 g/t Au
- VLF-EM and soil sampling conducted.

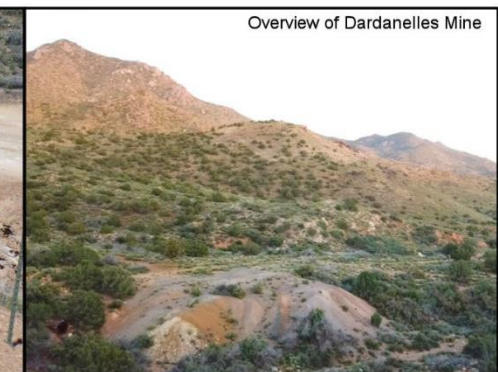




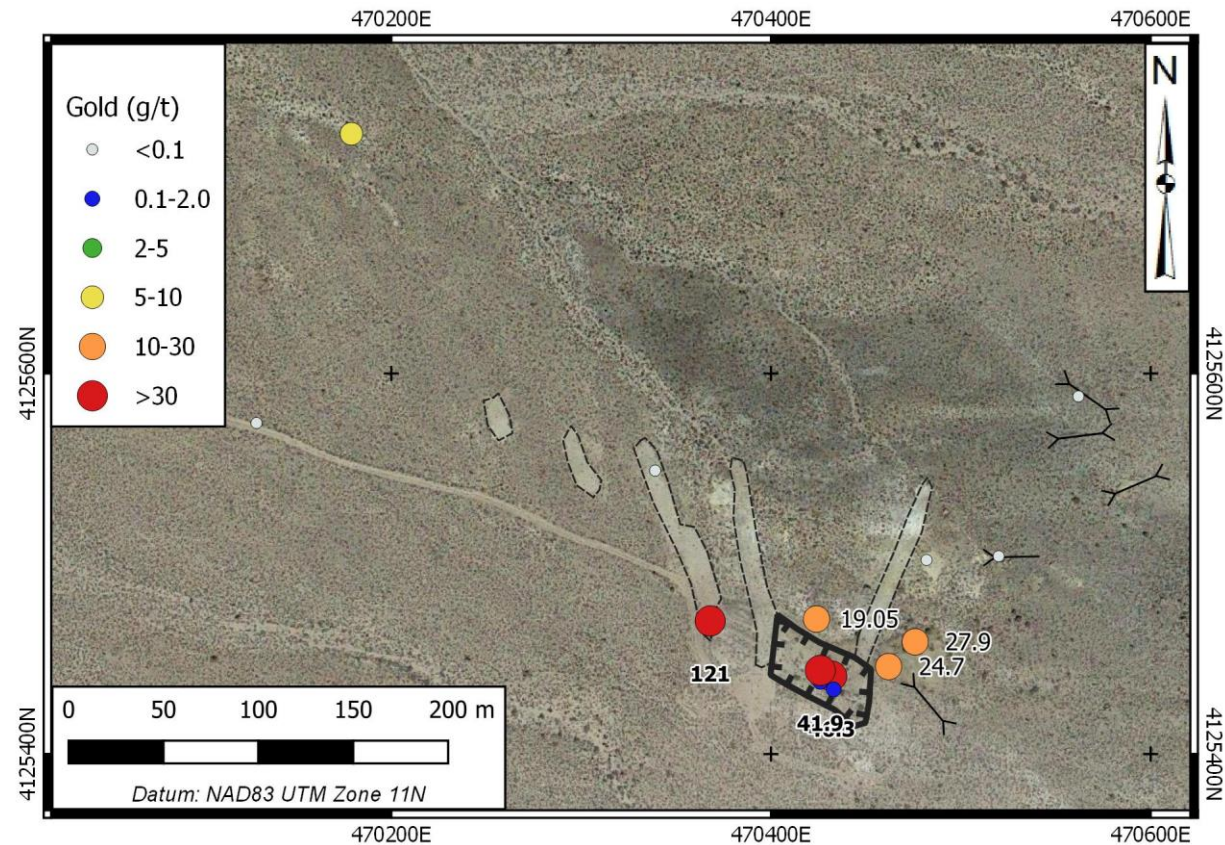
- 40 km north of Ely, NV
- Structurally controlled gold & jasperoid
- Numerous surface & underground workings
- Samples to **248 g/t Au** & **1.5 m @ 20.6 g/t Au.**
- Extensive district-scale stream & soil geochemical database



- 28 km northwest of Kingman, AZ
- Mesothermal or intrusion related gold & silver
- Significant production from the adjacent Tennessee Mine
- Significant underground workings on the property
- Recent sampling returned:  
**18.75 g/t Au, 764 g/t Ag,**  
11.6% Zn and 2.35% Pb







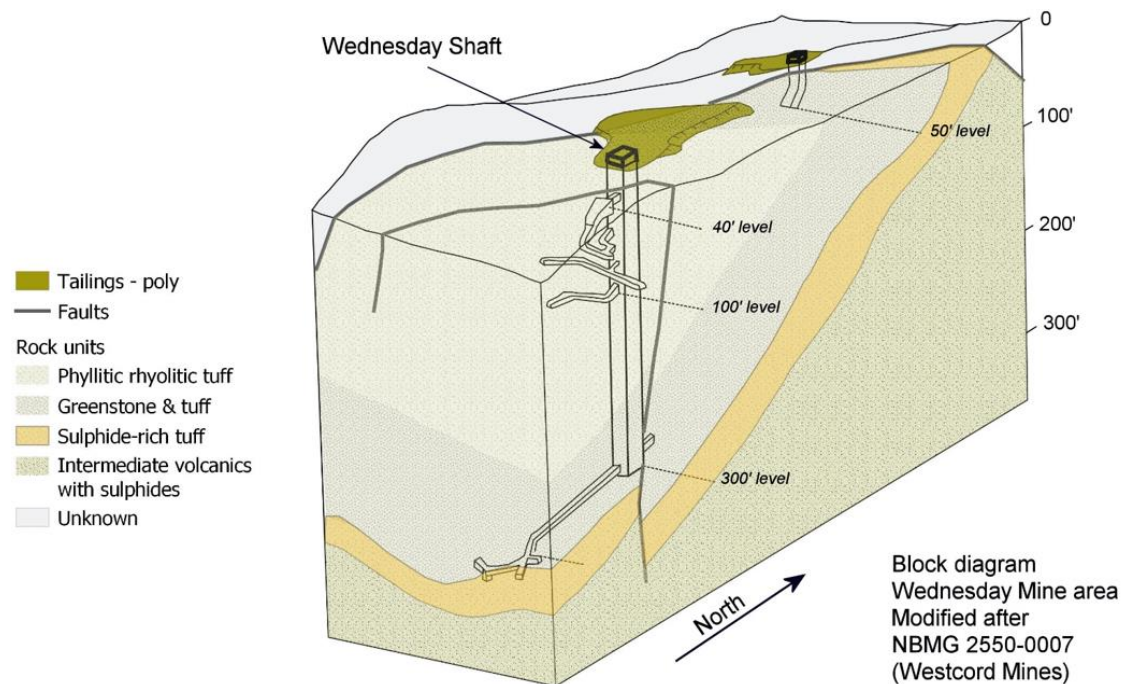
- Southwest Nevada, near Gold Point
- Intrusion-related mesothermal mineralization near roof-pendant contact
- High grade gold & silver in grab samples include **121 g/t Au** and **1,375 g/t Ag**

- 28 km ENE of Tonopah, NV
- Low sulphidation gold & silver
- Intermittent past production 1902-1934
- Covers Richardson Mine – most significant producer
- Recent sampling: **598 g/t Ag** and 2.42 g/t Au





- Low-sulphidation gold target
- 53 km NW of Fallon, NV
- Underground exploration and minor development
- Historic sampling: grabs to **22.9 g/t Au** and **300 g/t Ag**





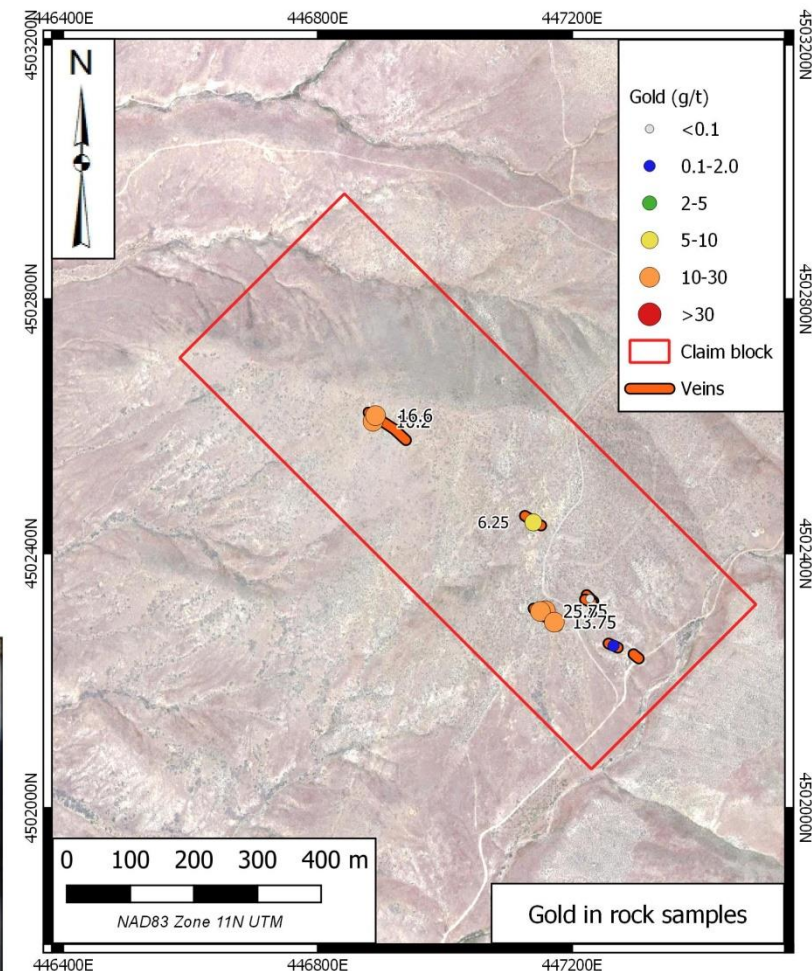
- Carbonate-hosted gold in normal and detachment faults
- Past production – 5200 t @ **6.18 g/t Au** (run of mine)
- Recent sampling:
  - 14 m @ 1.93 g/t Au
  - **4.58 g/t Au** (1 m chip)
- 3D IP survey defines two targets:
  - Structural control on down-dip extension of mine mineralization
  - Larger chargeability anomaly at depth
- Size potential: Open structural fairway to the east

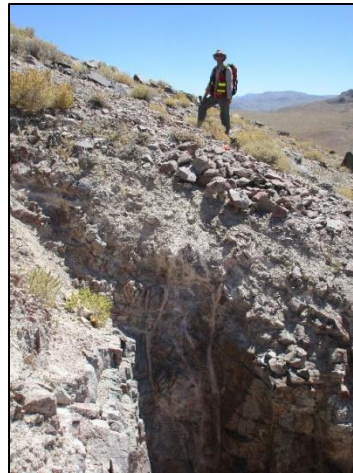


- Low sulphidation epithermal mineralization.
- Network of veins 540 m long, up to 60 m wide.
- Initial chip sample returned **25.7 g/t gold over 1.83 m**
- Initial grabs to **16.6 g/t gold**



Loner mineralization (a) 0.3m @ 13.85 g/t Au from weathered vein (b) vein swarm in granite (c) sulphide mineralization at NW end of the property (10.2 g/t Au).

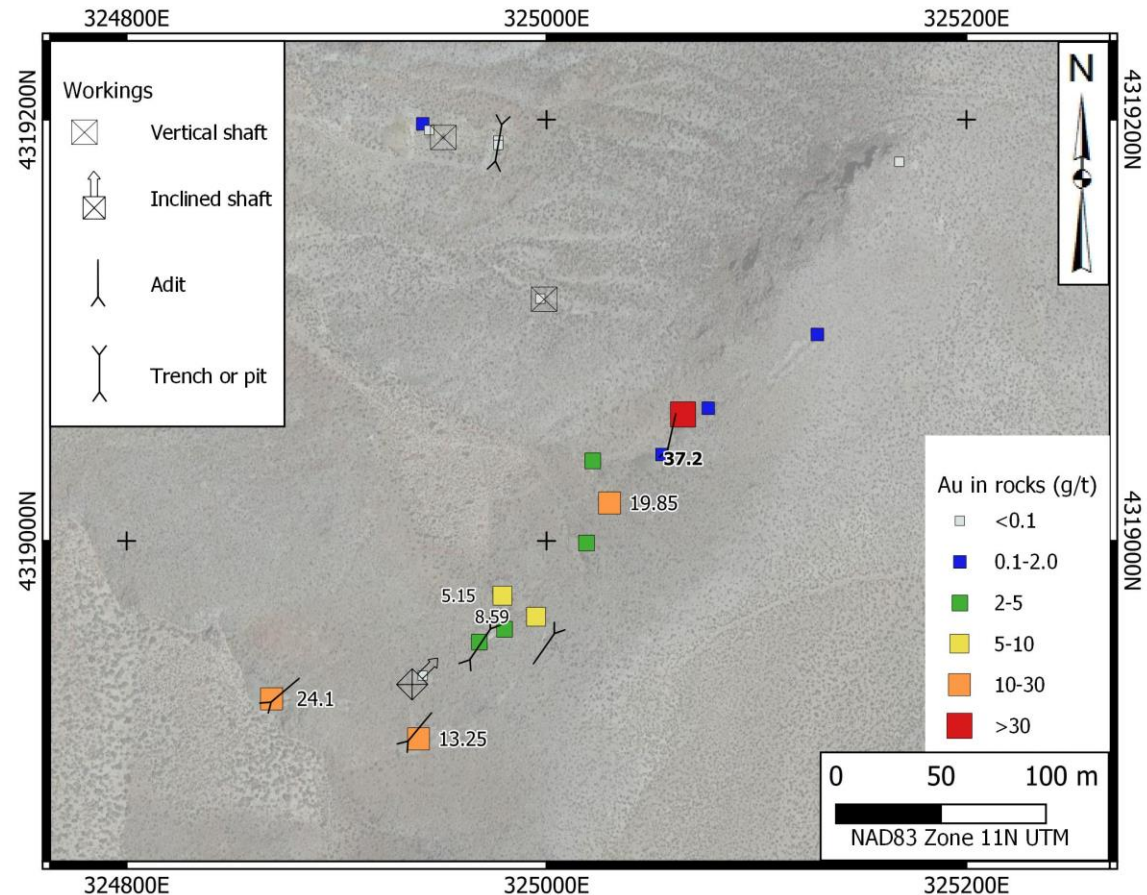


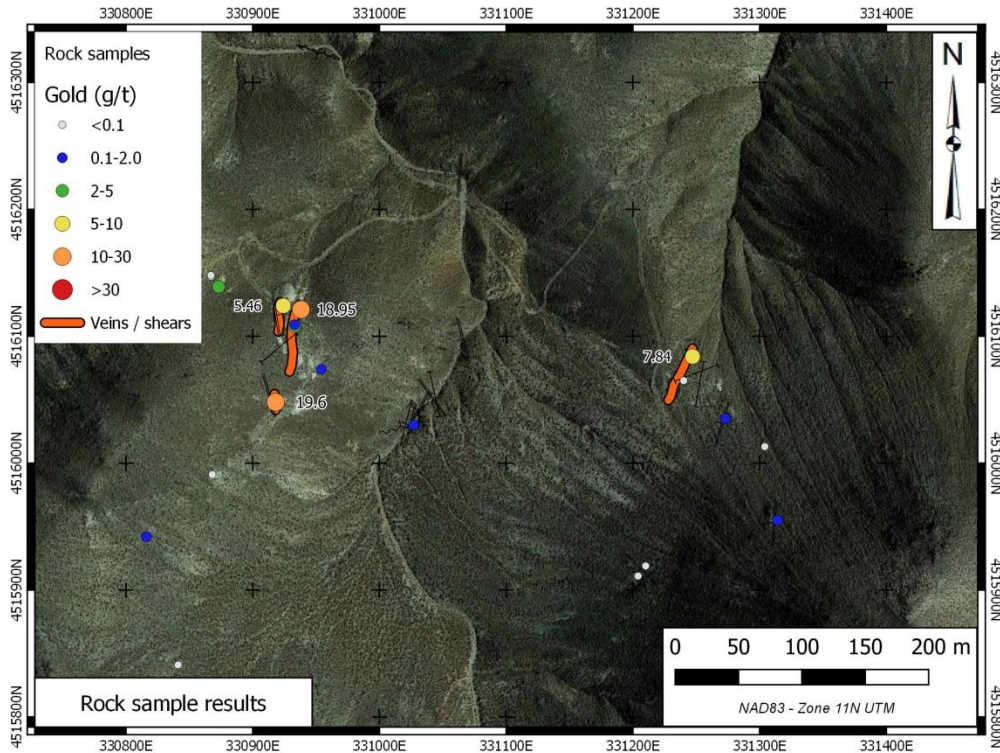


- Intrusive hosted Au-Cu target
- Vein / fault controlled
- Surface samples to **35.1 g/t Au & 19.1% Cu.**
- Historical shallow workings; no evidence of drilling.
- Overlooked showing: No MRDS.
- Road accessible – Central NV.



- 12 km east of Yerington, NV
- Mesothermal gold
- Several underground workings on the property
- Shear zone traced for 300 m with sampling up to **37 g/t Au**

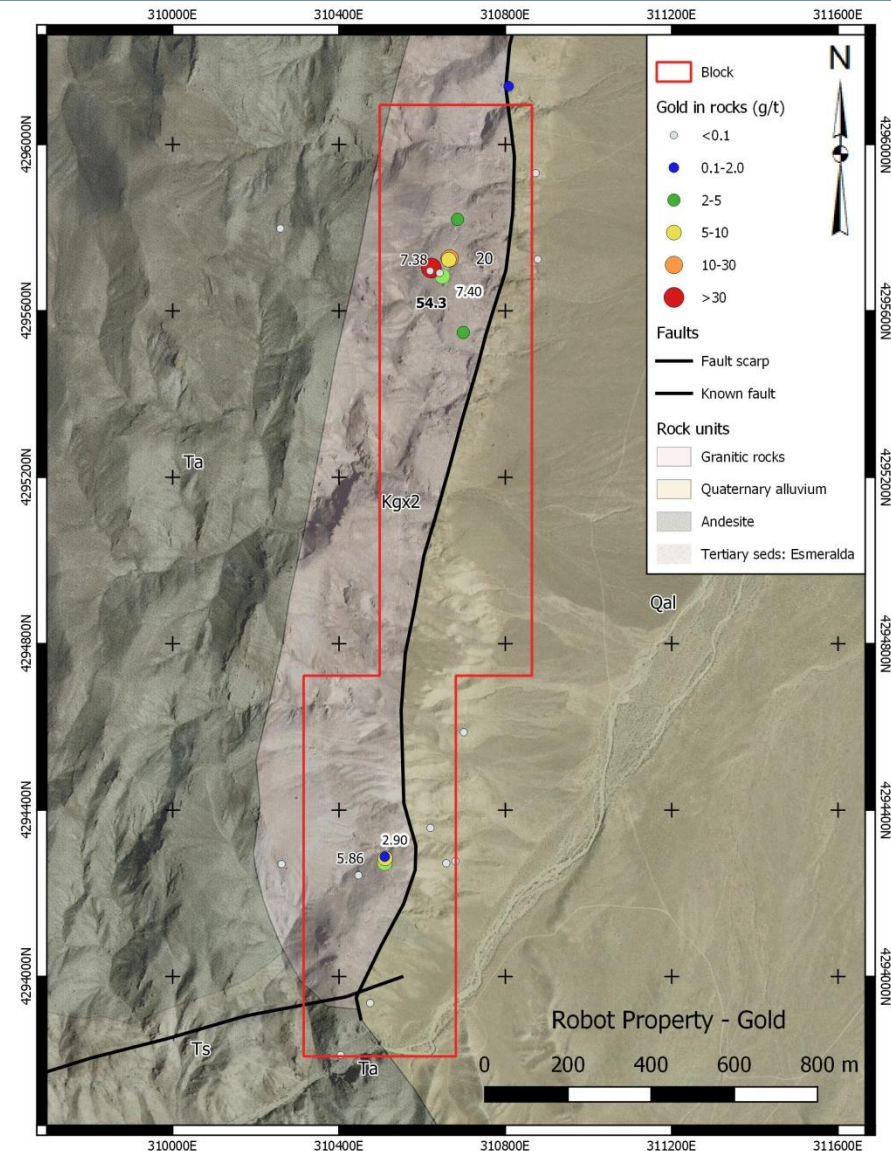




- Vein array with veins exposed up to 60 m long and > 1 m wide.
- Past small-scale production.
- Initial grab sample of **18.9 g/t gold** and chip sample of **19.6 g/t gold** over 0.5 m.
- Road accessible in Pershing County







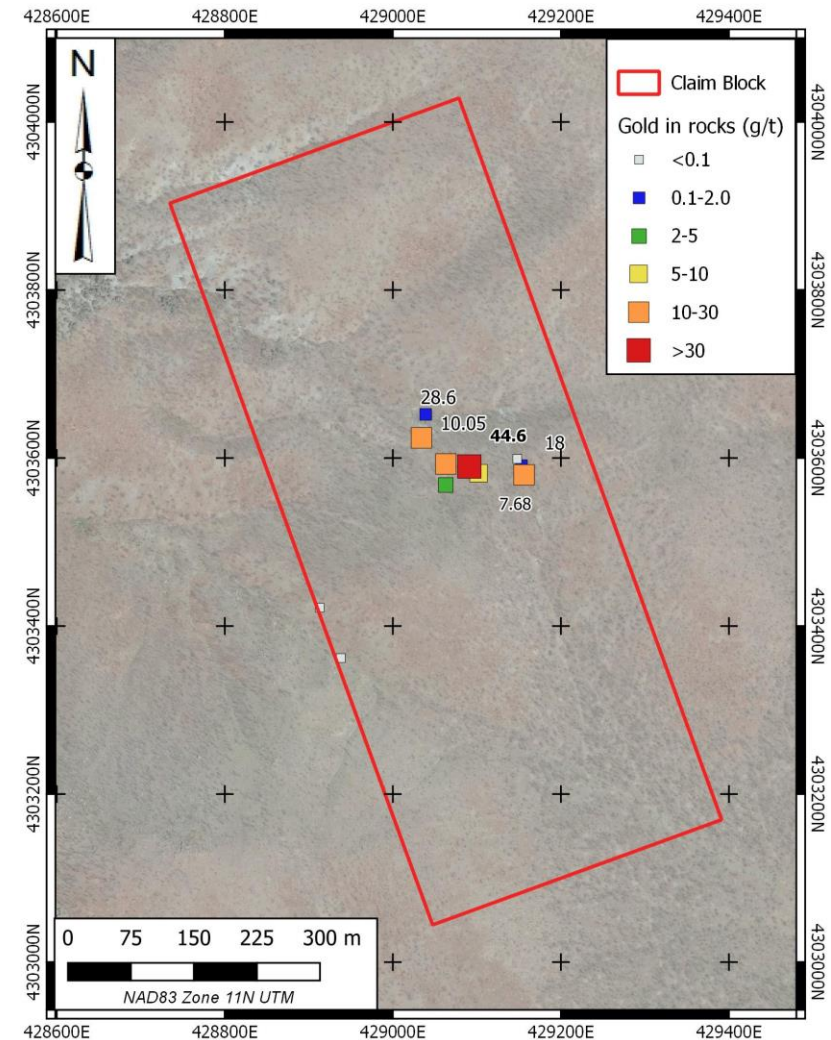
- Multiple gold occurrences along a mile-long trend in the footwall of a prominent north-striking range front fault.
- Gold hosted in veins and shears.
- Initial grab samples of **54.3 g/t gold** and **20.0 g/t gold** from separate veins **50 m** apart.
- 5.86 g/t gold grab from South Zone



- Northern Humboldt County
- Widespread intrusion related veins and skarn mineralization
- Recent grab sample assays up to **15.95 g/t Au** with **181 g/t Ag** and 1.1% Cu



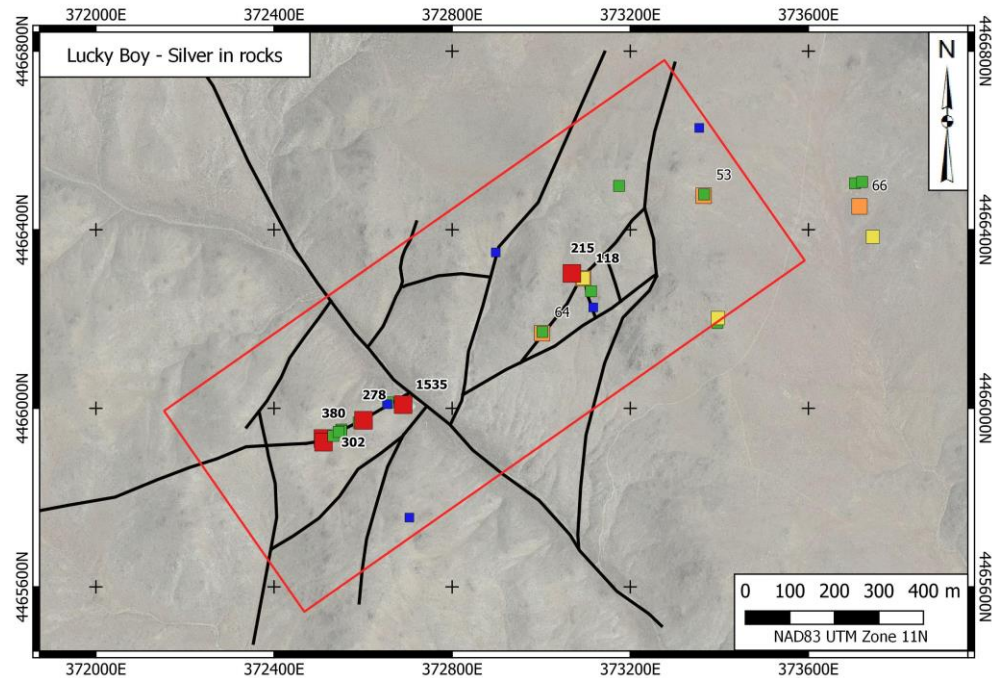
- 8 km east of Gabbs, NV
- Low sulphidation epithermal gold
- Minor high grading
- Recent sampling returned to **44.6 g/t Au.**



- 67 km west of Prescott, AZ
- Orogenic / mesothermal gold
- Minor production: 1906-1931
- 107 m inclined shaft
- Developed along strike for 100 m to a depth of 50 m
- 10 stamp mill operated on the property until 1931
- Recent sampling: to **22.8 g/t Au** with 4/27 > 5 g/t Au

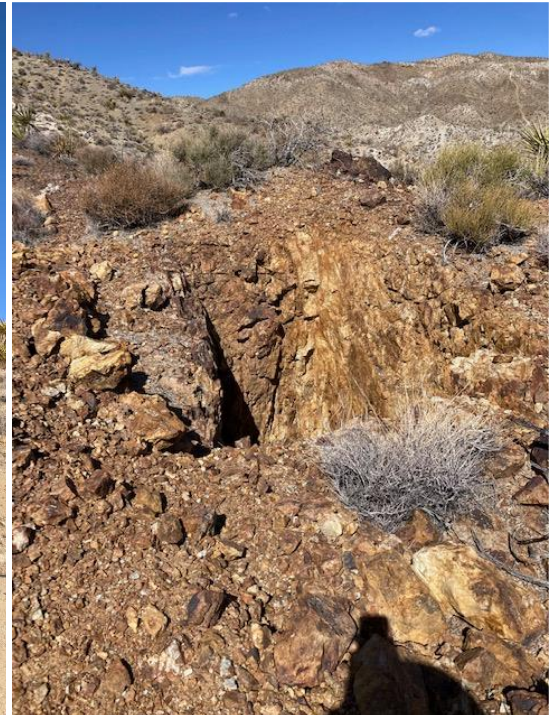
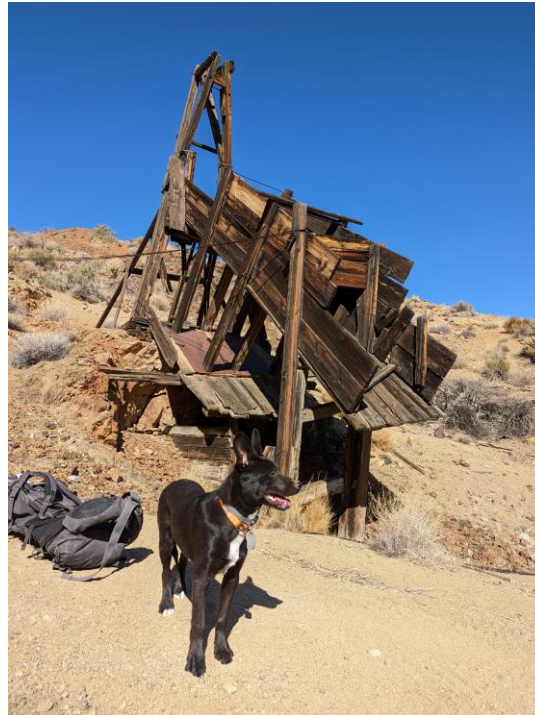


- 18 km north of Lovelock, NV
- Low sulphidation epithermal silver & gold
- Intermittent small district production from 1878 until 1942
- Covers Lucky Boy Mine
- Recent sampling returned up to **1,535 g/t Au** and 2.17 g/t Au



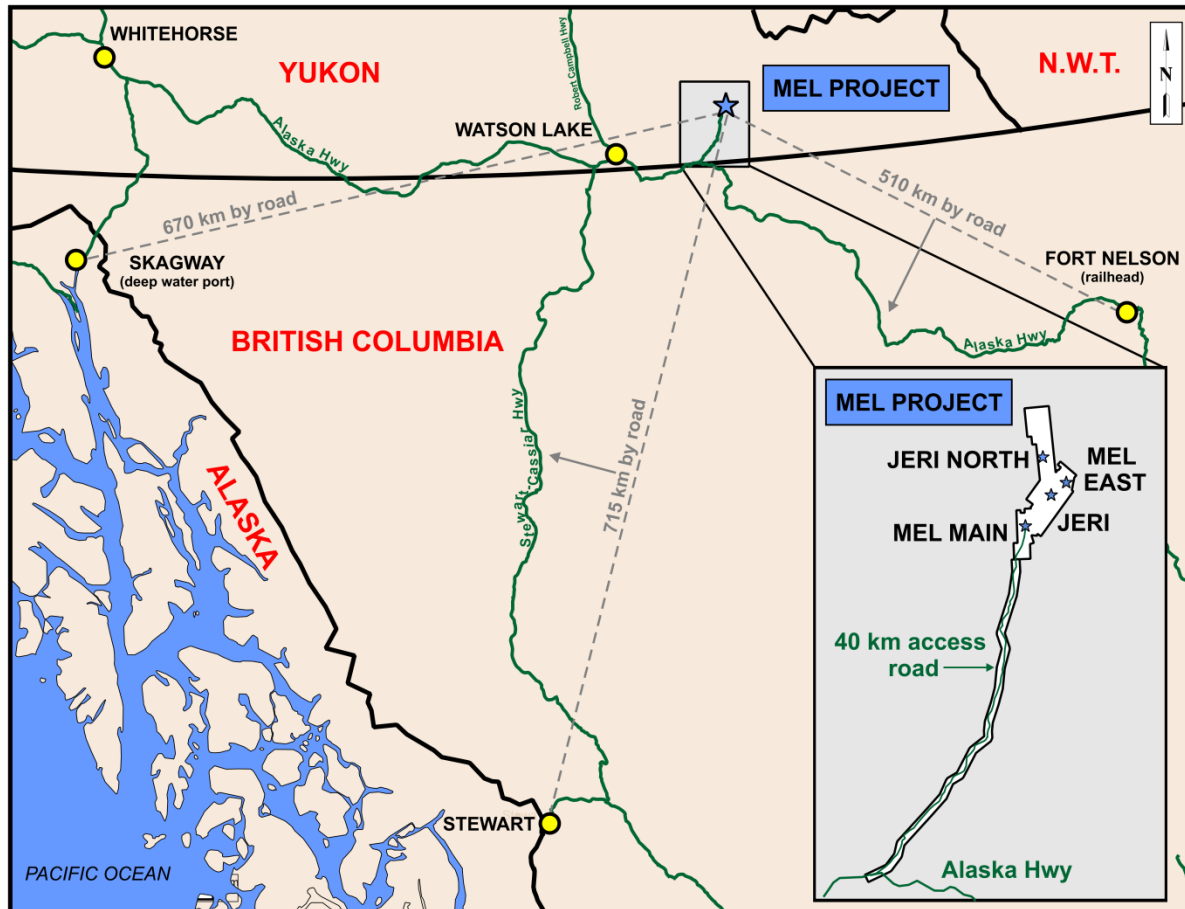


- Low-sulphidation silver target
- 23 km north of Searchlight, NV
- Underground exploration
- Initial sampling to **585 g/t Ag**



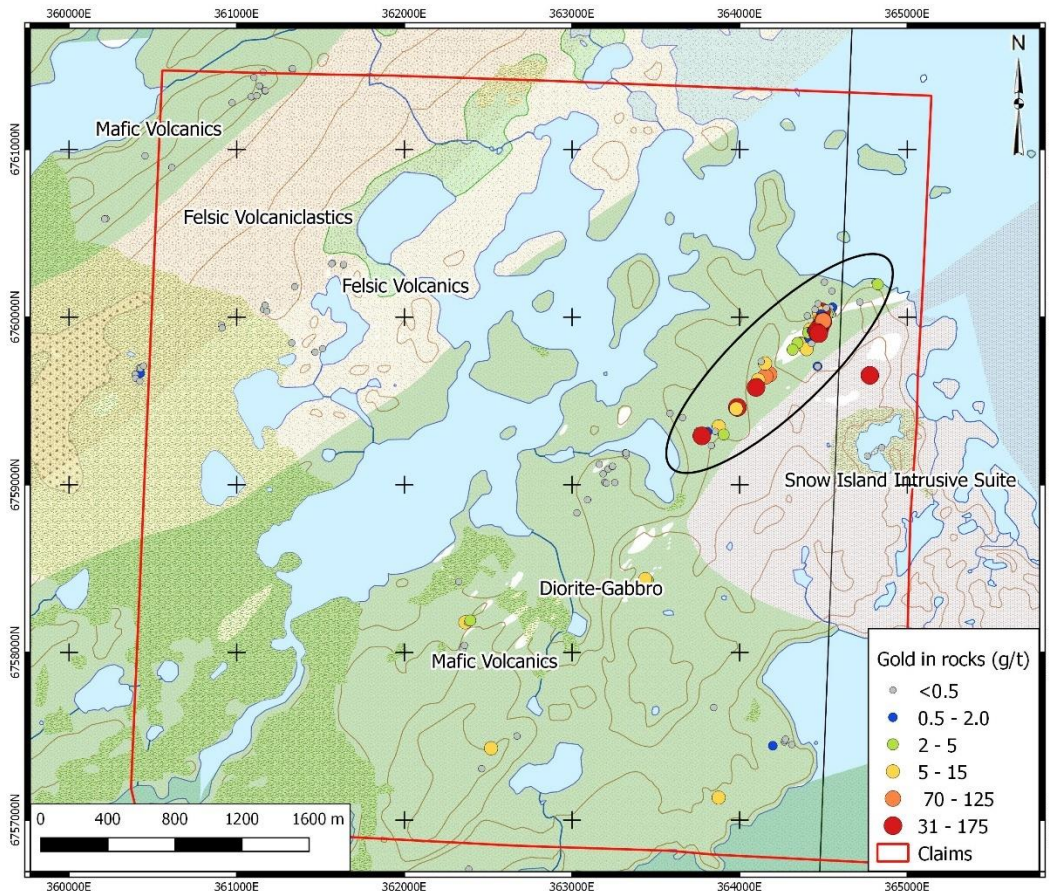


## Zinc-Lead-Barite Deposit Optioned to Benz Mining Corp. (TSX-V:BZ)



- Located 40 km north of the Alaska Highway in southeast Yukon, 510 km by road from Fort Nelson (railhead) and 670 km from Skagway (tidewater port).
- Four zinc-lead-barite stratabound zones open for expansion.
- The Mel Main Zone hosts an inferred resource of 5.38 million tonnes grading 6.45% zinc, 1.85% lead and 44.79% barite\*.





- 1.4 km train of float & bedrock gold to **174 g/t Au**
- 25 of 63 samples > **5 g/t Au**
- Archean lode-gold style mineralization (eg. Timmins, Kalgoorlie, Red Lake)
- Drill targets defined by associated geophysical anomalies

## REGIONAL SCALE GOLD TARGET ALONG A RHEOLOGICAL BREAK

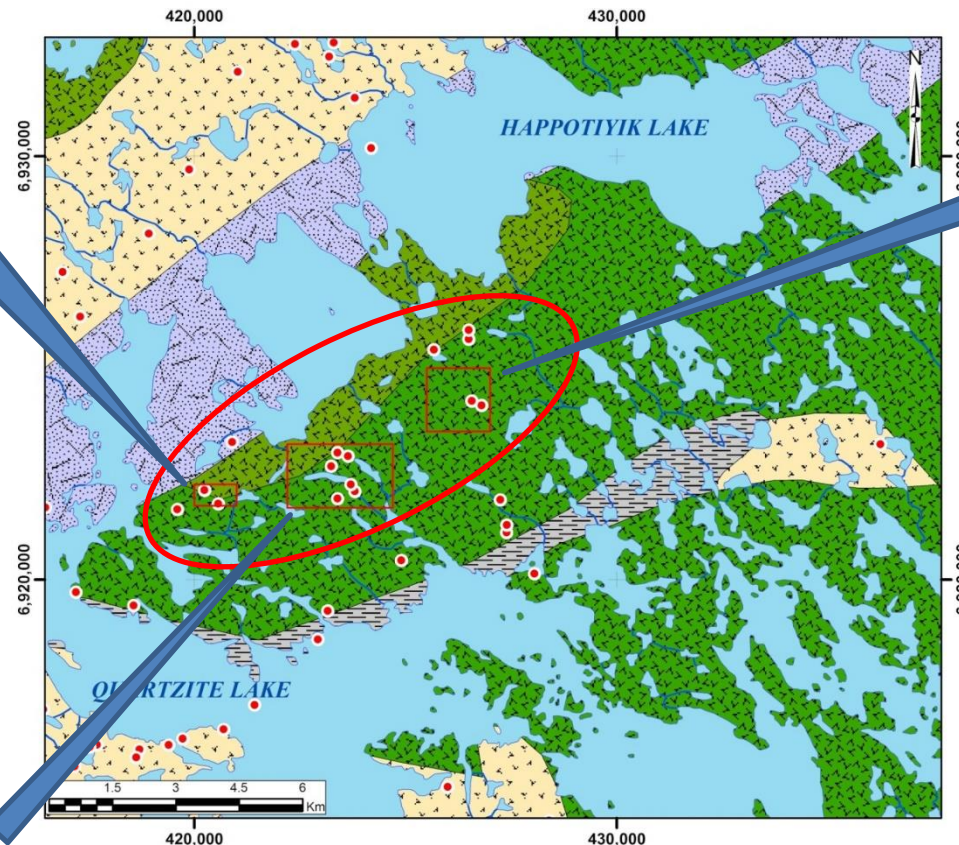
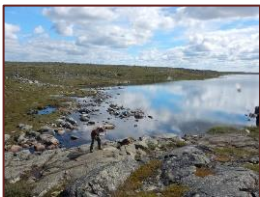
### West Zone

- Quartz-carbonate-pyrite-galena veins
- Grab samples to **27 g/t Au**



### Eva Lake

- Cpy-py-qtz veins in carbonate altered volcanic float
- Historical grabs: **8.1 to 132 g/t Au.**



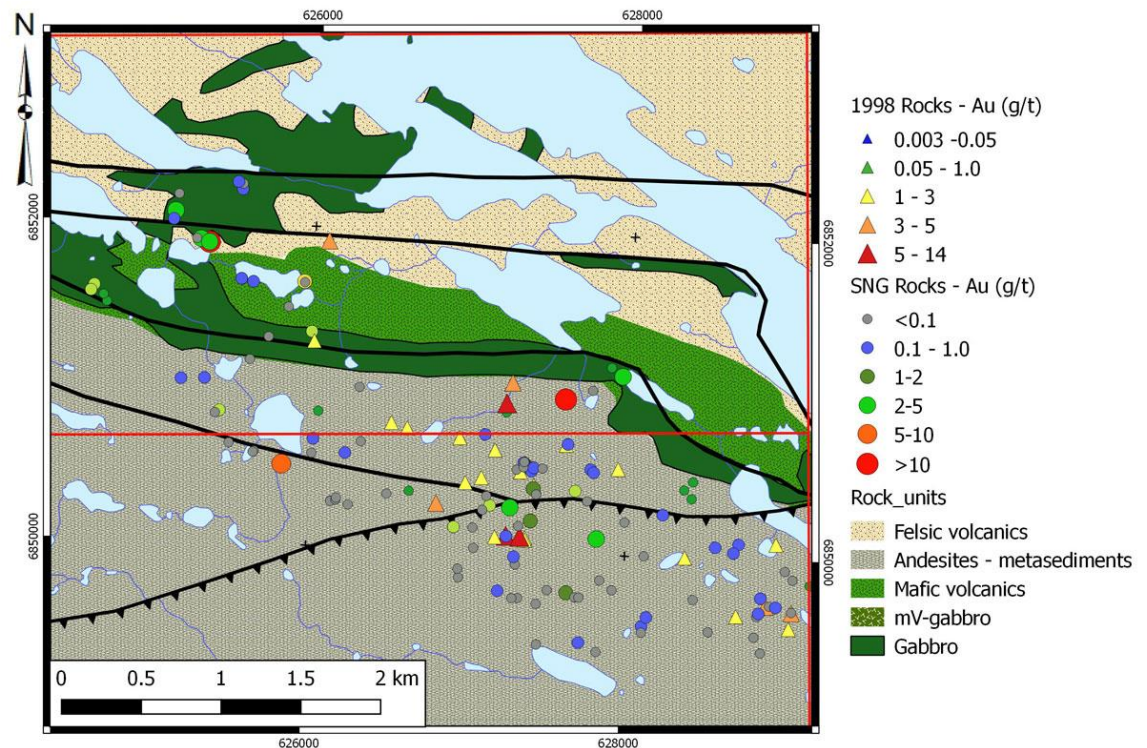
### Joan Lake Zone

- Carbonate altered metavolcanics with pyrite-quartz veins
- Historical grabs to **17.8 g/t Au.**

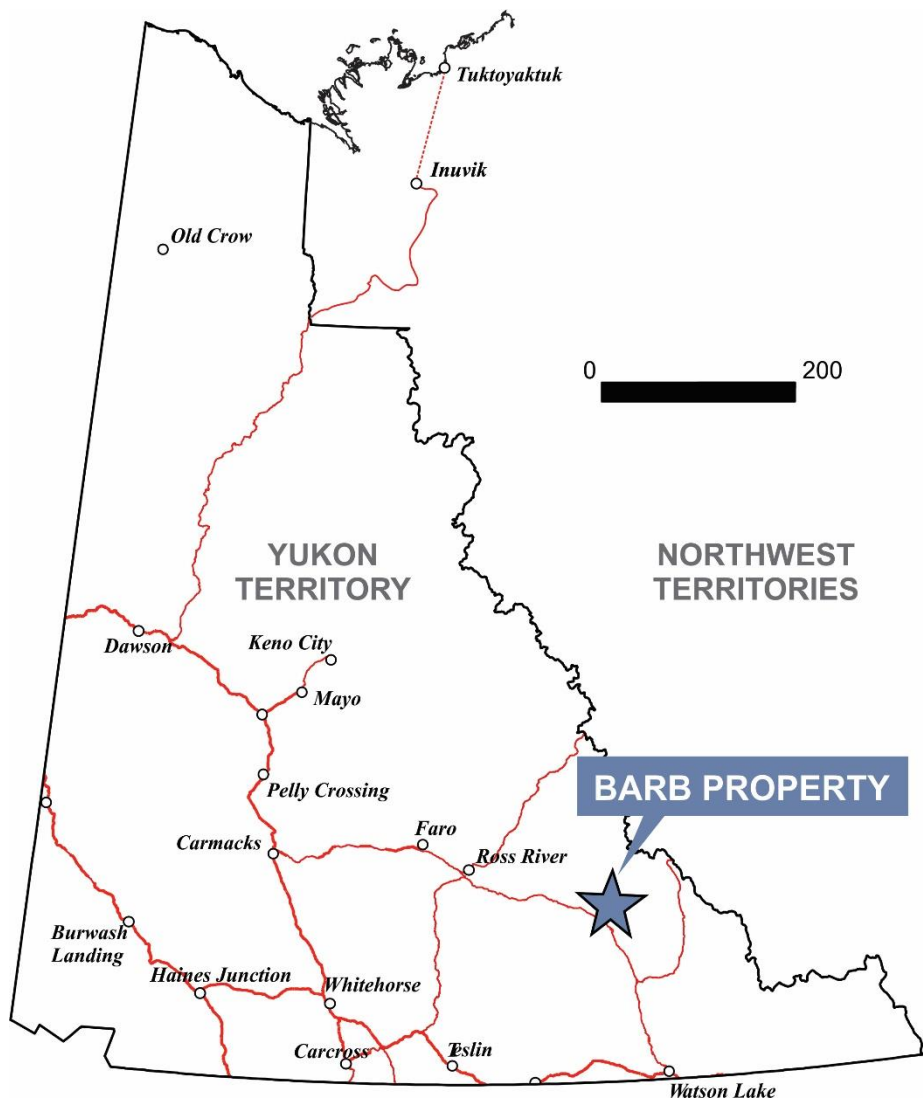




- 150 km WNW of Arviat, NU
- Archean lode-gold
- Drilling by Comaplex (2002):
  - 12 holes
  - 1,766 m
  - **1.25 m @ 17.5 g/t Au**
- Recent (2018) sampling and geophysics.







- VMS style target located 40 km east of the past producing Wolverine silver-zinc-copper-lead-gold mine.
- Historical drilling, geochemical and geophysical work included the preparation of a mineral resource from 1977 by Sovereign Metals Corporation (Ikona, C) of 533,434 tonnes grading 102.86 g/t silver, 6.1% lead and 4.6% zinc\*
- Latest exploration took place in 1998 and several high priority geophysical targets have been identified for future drilling

\*This inferred resource was calculated using a polygonal model. The reader is cautioned that this is a historical resource estimate and should not be relied upon. Sufficient work has not yet been completed by Silver Range to categorize this as a current resource; however, data collected by previous operators is considered to be reliable and consistent with industry standards at the time.



- All of our projects are available for option, JV or outright sale
- Terms tailored to individual partner circumstances – from IPO through junior to major company.
- Projects include:
  - Comprehensive digital data bases
  - Target reports outlining drill targets / next steps.
  - Permits and posted bonds for some drill ready projects
- Full technical support for execution & permitting available.



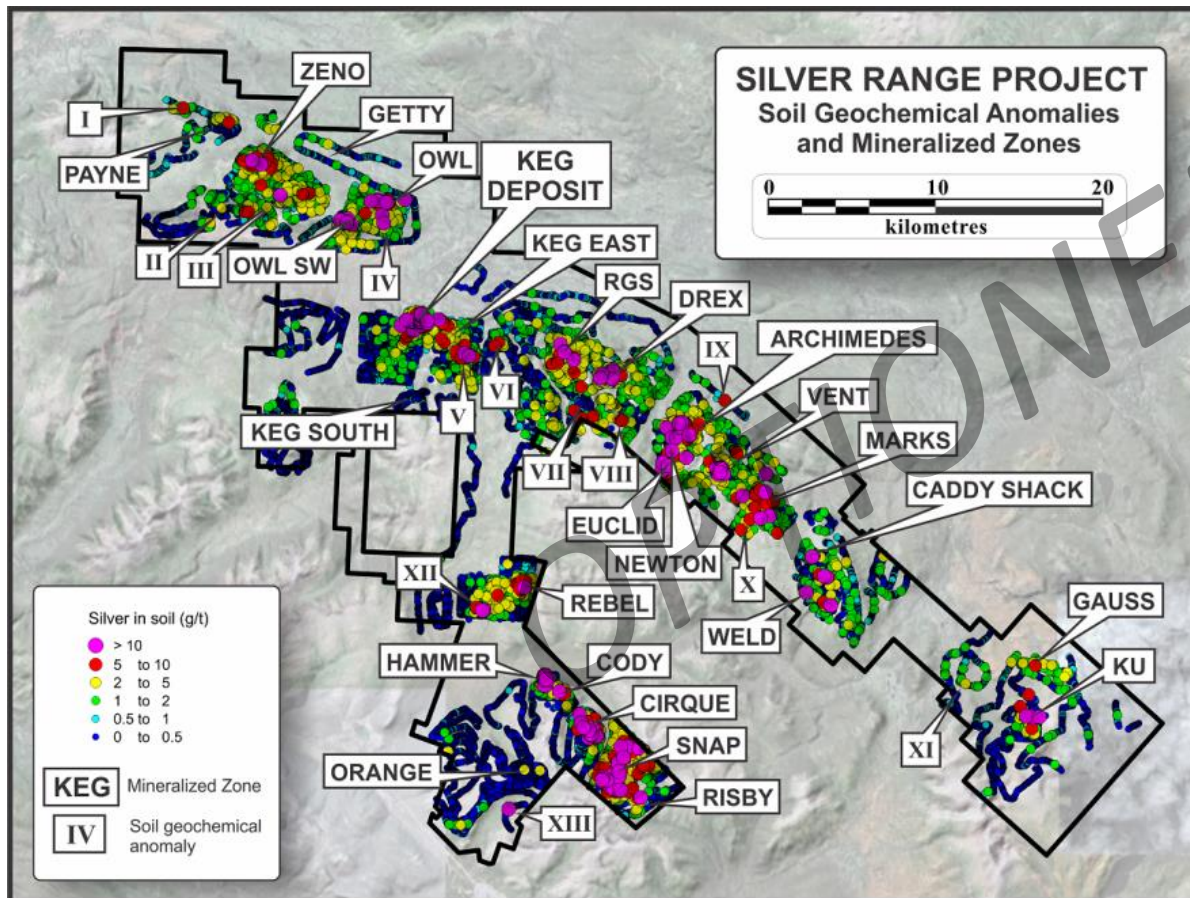
# Properties currently under option



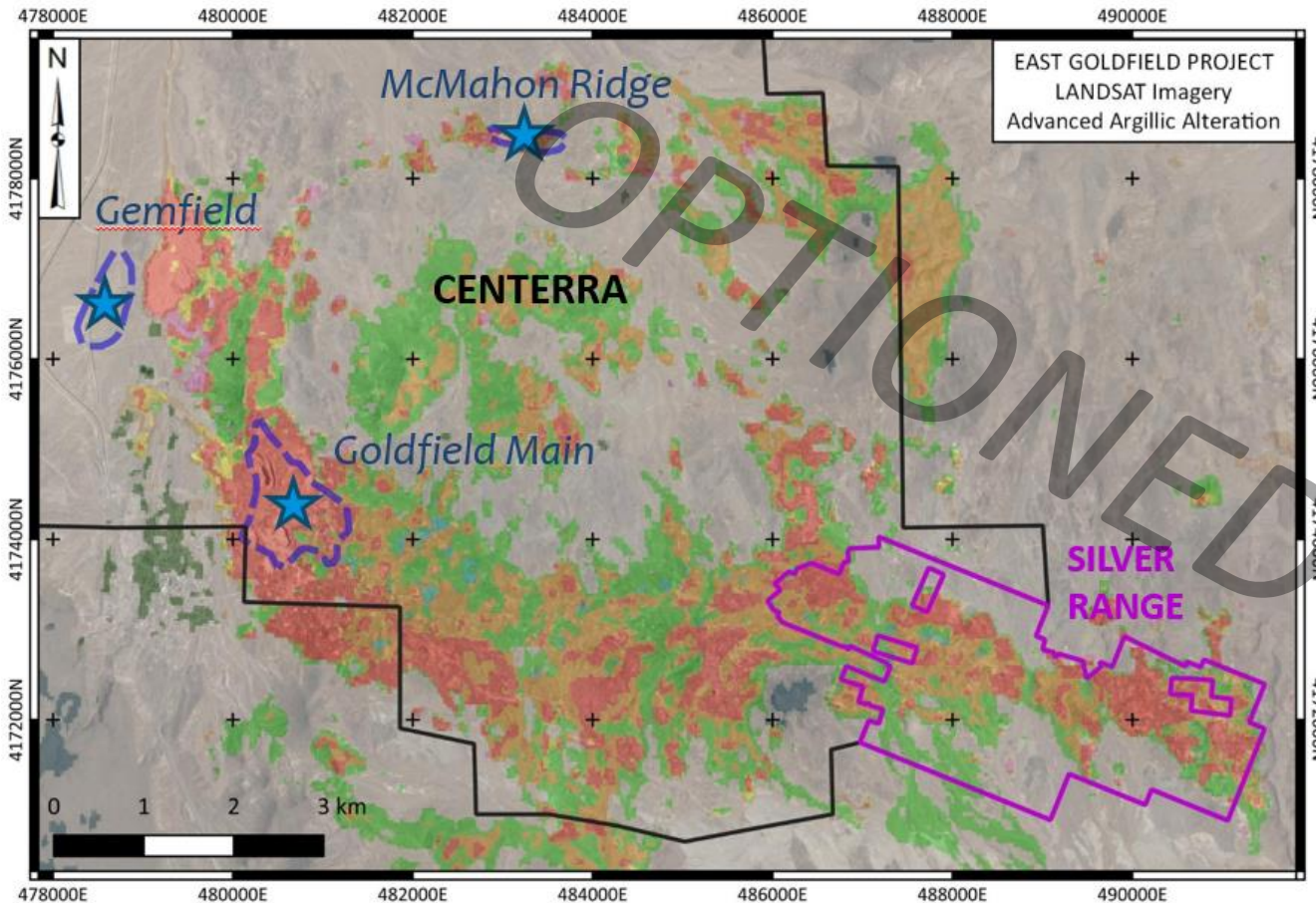
- Five deposits
- >20 year mine life
- Joint venture between Ross River Dena FN and Broden (Oxygen Capital).
- Broden has been drilling to prepare updated resources / PFS
- Key signature from neighboring FN necessary to advance the project.
- Silver Range has a 10% project interest, carried through until conveyance permits received & a royalty on 1 deposit



## District Scale Silver Project Optioned to a Private Company



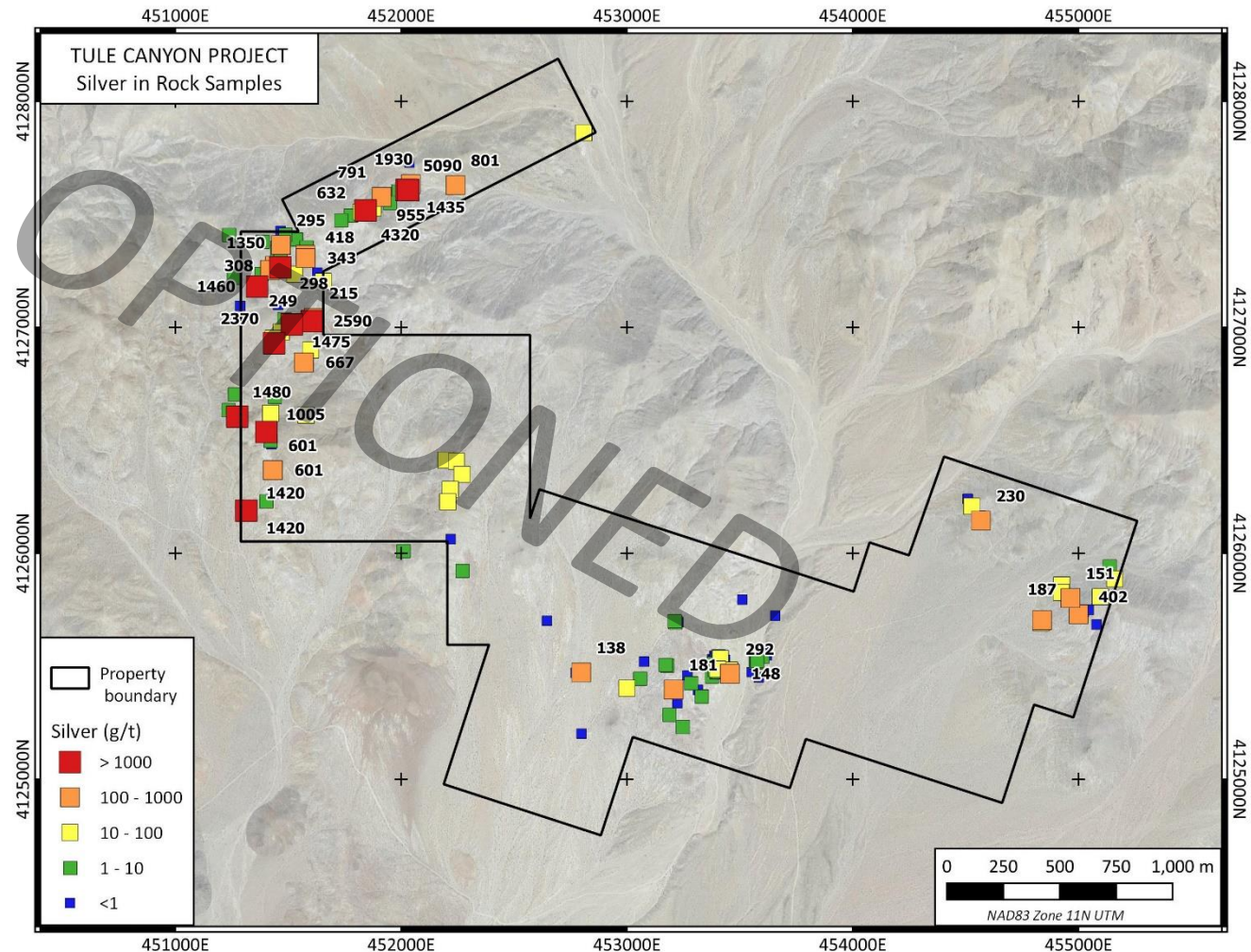
- The Silver Range project is a developing silver district centered on the 39.76 million tonne Keg deposit\* see page 2
- **38.7 million ounces silver**
- **675 million pounds zinc**
- **228 million pounds lead**
- **131 million pounds copper\***
- Open to expansion to WNW, with edge drill hole Keg-66 returning 30 m @ **51.86 g/t Ag** (+significant Pb-Zn-Cu-Sn-In)
- 25 additional Ag-bearing zones and a further 13 discrete soil geochemical anomalies

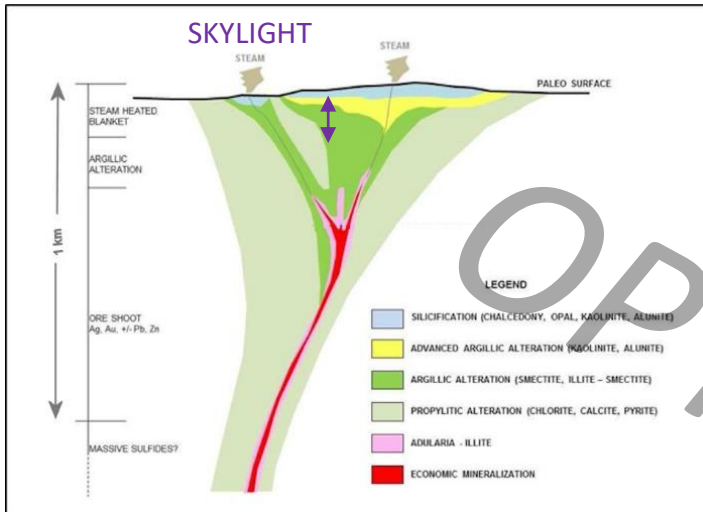


- Goldfield District: Centerra developing 3 deposits
- Eastern extension of the district
- Tom Keane Mine & scores of other workings



- Gold: > 30 g/t
- Silver: > 5,000 g/t
- Four small mining operations (1893 – 1980's)
- Optioned to Green Gold LLC





- Royston Hills, Nye County.
- Fully preserved epithermal system including bedded silica caps.
- Epithermal clay alteration, locally high temperature dickite in linears on flanks of the edifice.



Silica caps

Property viewed from northwest

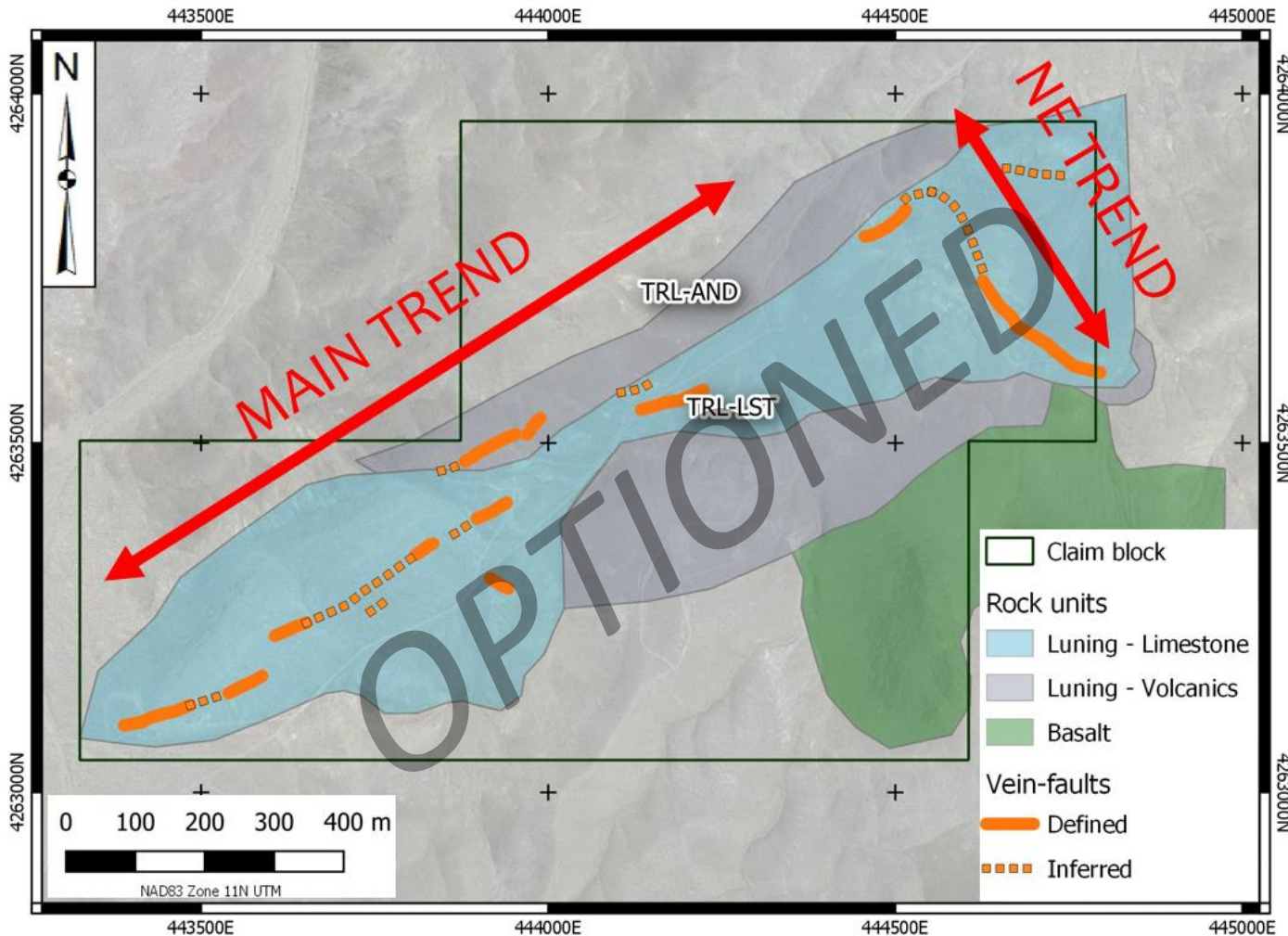


Flat-lying bedded silica



High temperature clay alteration – SW flank of edifice





- Major showings in Republic District, Nye Cty.
- Several small mines (Hyland, Black Butte, Farris)
- Silver to 1,875 g/t



- Eastern extension of Gold Point mining district, southwestern NV
- Historic production from several nearby mines (+ 28,000 oz Au)
- Similar setting, rock formation and style of mineralization as at Mineral Ridge (Scorpio Gold)

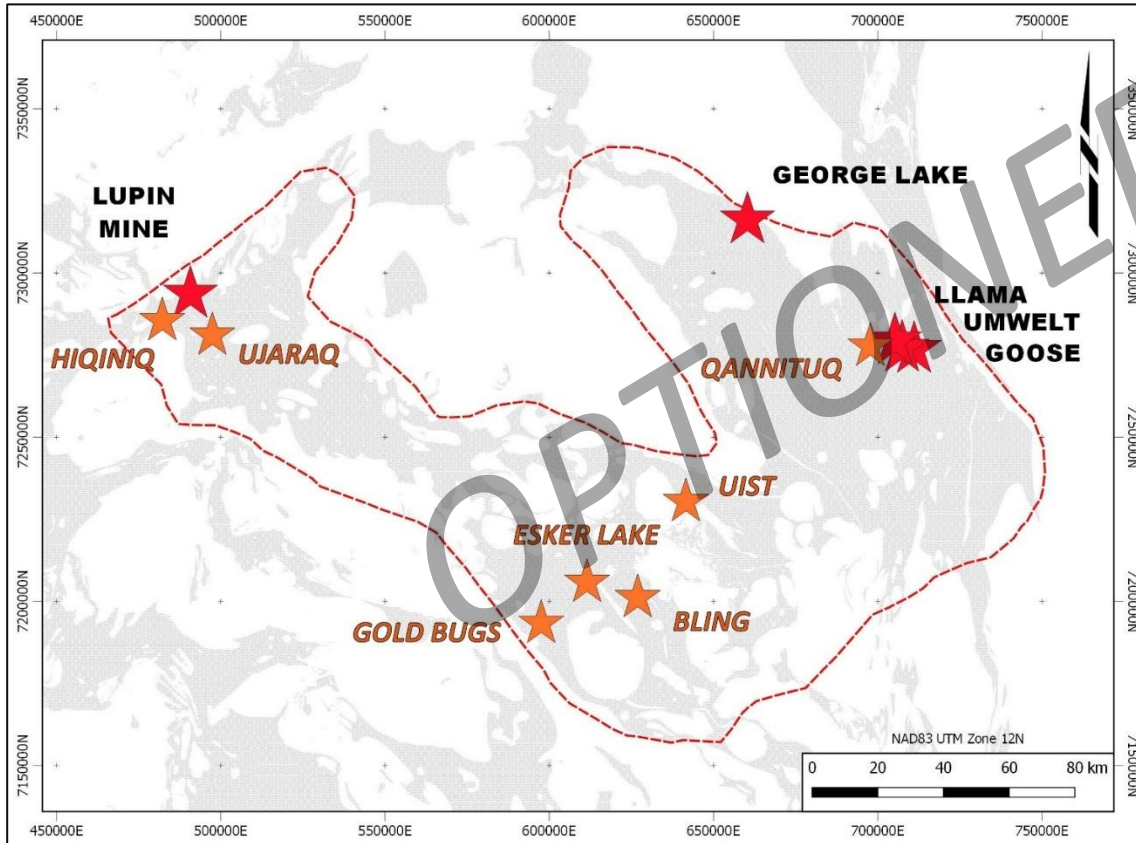


- Covers historic silver / gold district (71 claims)
- Produced 300,000 oz Ag-eq since 1907
- Surface sampling:
  - to 11.85 g/t Au
  - To 1,490 g/t Ag
- Extensive low-sulphidation epithermal system



*Bellehelen Mine 50 TPD mill operated 1922-1927*

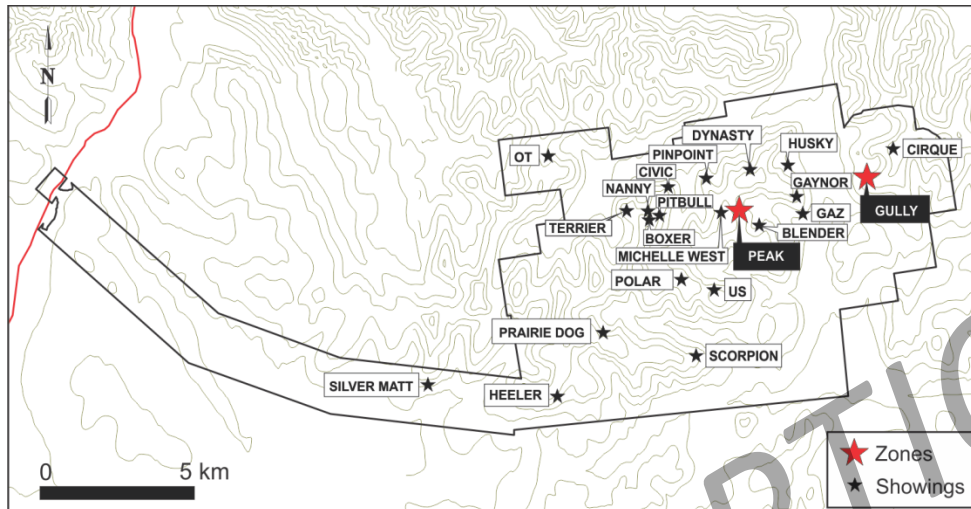




- Seven gold properties between Sabina's Back River Project & Lupin Mine
- Optioned to Viridis Mining (ASX)
- Has earned 51%
- Recent drilling at Esker Lake
- Holds all significant gold showings outside of the mine / development projects



## District of Zinc-Lead-Silver Showings



- Newly discovered district-scale carbonate-hosted high-grade silver and base metal mineralization
- 22 showings within a 75 sq. km area
- First pass drilling returned up to **310 g/t silver, 8.86% lead and 16.75% zinc** over 18.29 m in the Gully Zone and 0.55% zinc, **15.18% lead and 2133.9 g/t silver** over 2.95 m at the Peak Zone
- Accessible with staked road access to the Dempster Highway
- Recent hand trench averaged **370.7 g/t silver, 14.8% lead and 2.2% zinc** over 17 m at the Gaynor Zone



## **Silver Range Resources Ltd.**

**510-1100 Melville Street**

**Vancouver, BC, V6E 4A6**

**Phone: 604-687-2522**

**Toll Free: 1-888-688-2522**

**Web: [www.silverrangeresources.com](http://www.silverrangeresources.com)**

**Project inquiries:**

**Mike Power**

**Above phone lines or**

**Cell: 702-972-7496**

**E-mail: [mpower@silverrangeresources.com](mailto:mpower@silverrangeresources.com)**