



LUCKY BOY

www.silverrangeresources.com

TSX-V:SNG

- Intrusion-related or mesothermal style silver-gold mineralization
- Historic workings for 200 m along strike at the Lucky Boy vein and 80 m at the NE showing.
- Past small-scale production. Grab samples up to **1,535 g/t Ag** and 2.17 g/t Au.
- Road accessible on BLM land in Pershing County.



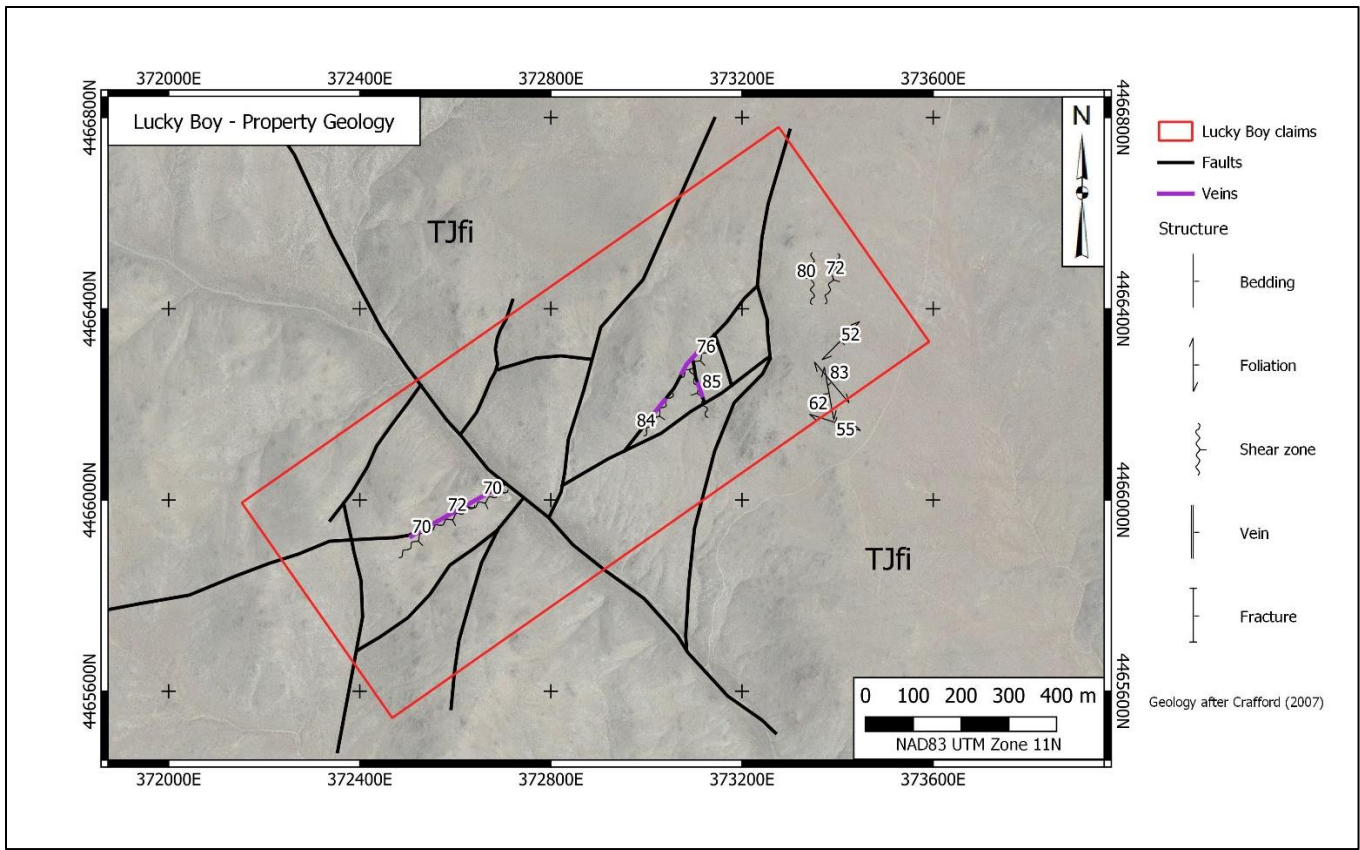
LOCATION & ACCESS

The Lucky Boy Property is centred at $40^{\circ} 20' N$ $118^{\circ} 30' W$ in Pershing County. It is 18 km north of Lovelock in the Trinity Mining District. The property is accessible from Lovelock via the Meridian and Trinity Canyon Roads. The property consists of 9 Federal lode claims staked in Section 33, Township 29N, Range 31E on BLM land. There are no special surface land use restrictions on these lands.

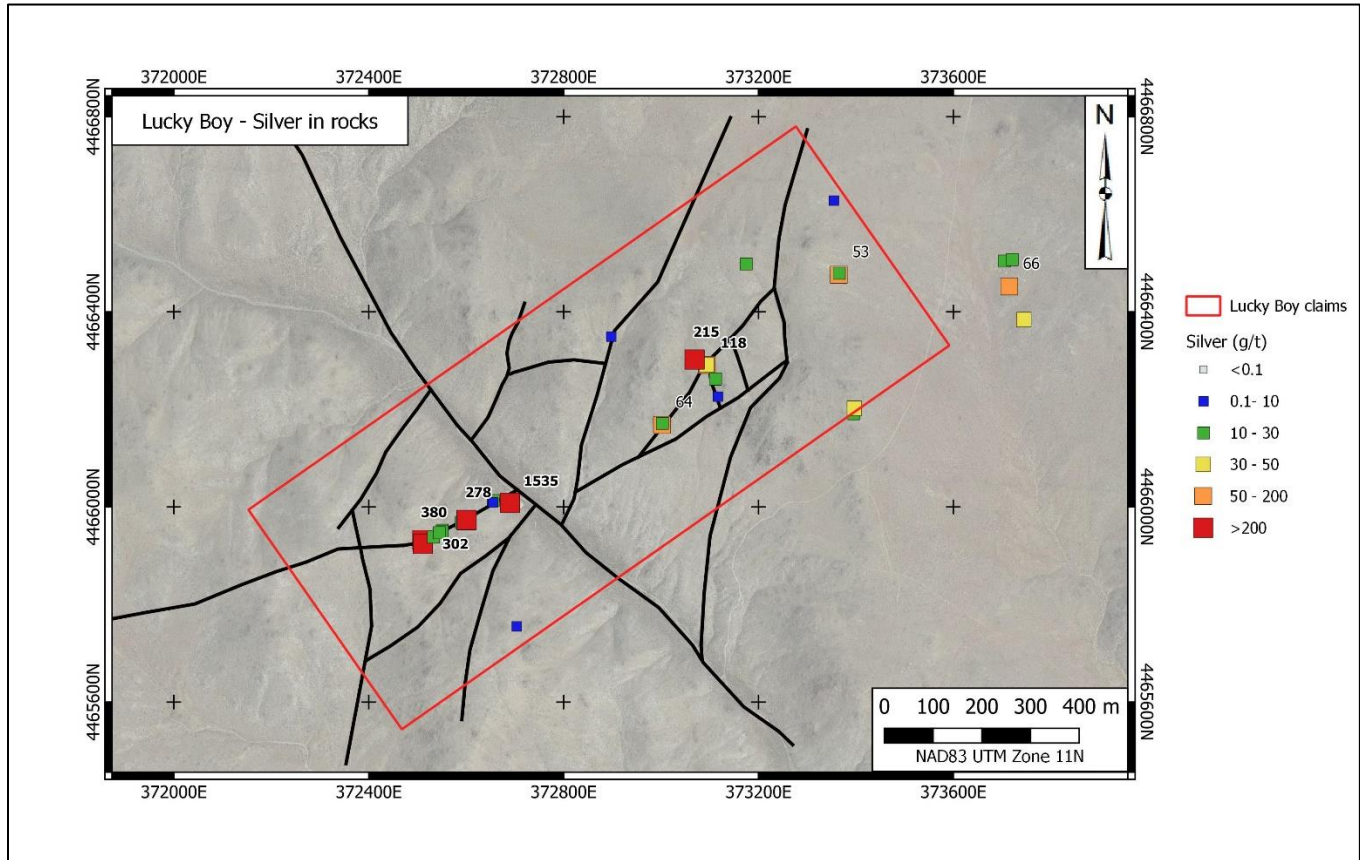
EXPLORATION HISTORY

Gold & silver were discovered in the Trinity Canyon area between 1859 and 1865. The Mammoth Claims in the vicinity of the Lucky Boy Property were patented in 1878. The Lucky Boy Mine is in the eastern portion of the property. No documentation concerning this mine has been found to date. Underground hardrock mining and exploration persisted until 1942 with the wartime closure of gold mines. Placer mining in the district occurred until the 1960's. No recent exploration appears to have been conducted on the

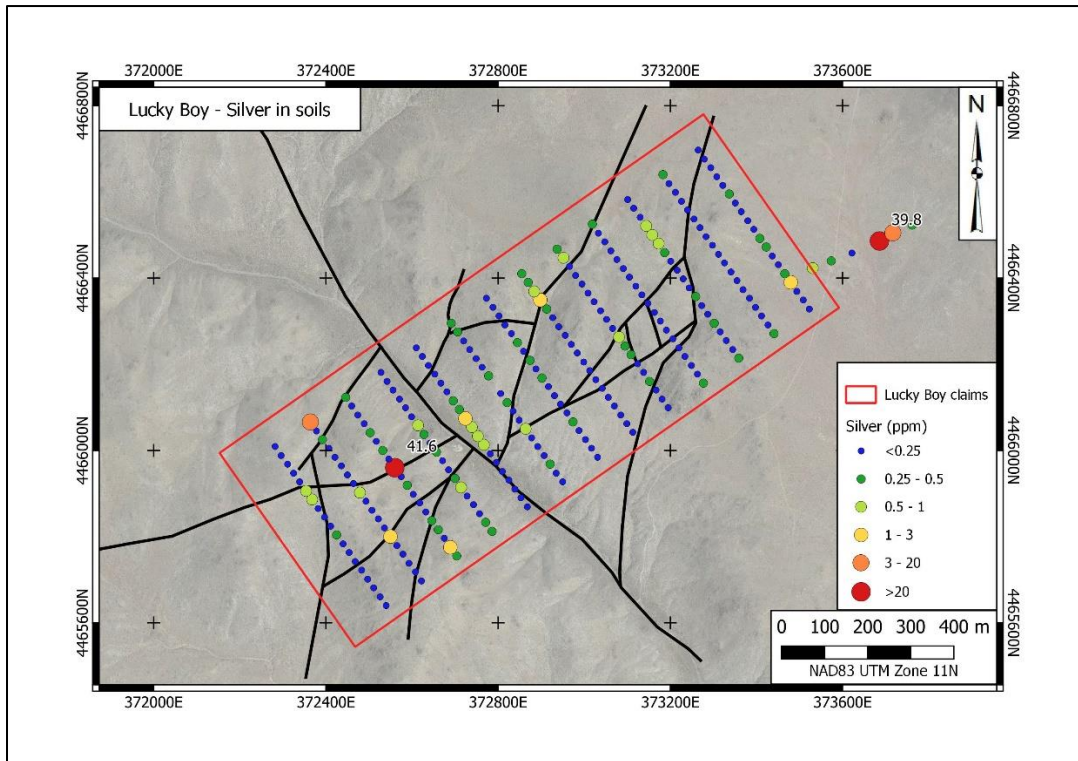
property. Silver Range staked the Lucky Boy Mine and extension in 2016 and explored the property further with geochemical surveys & mapping in 2020.



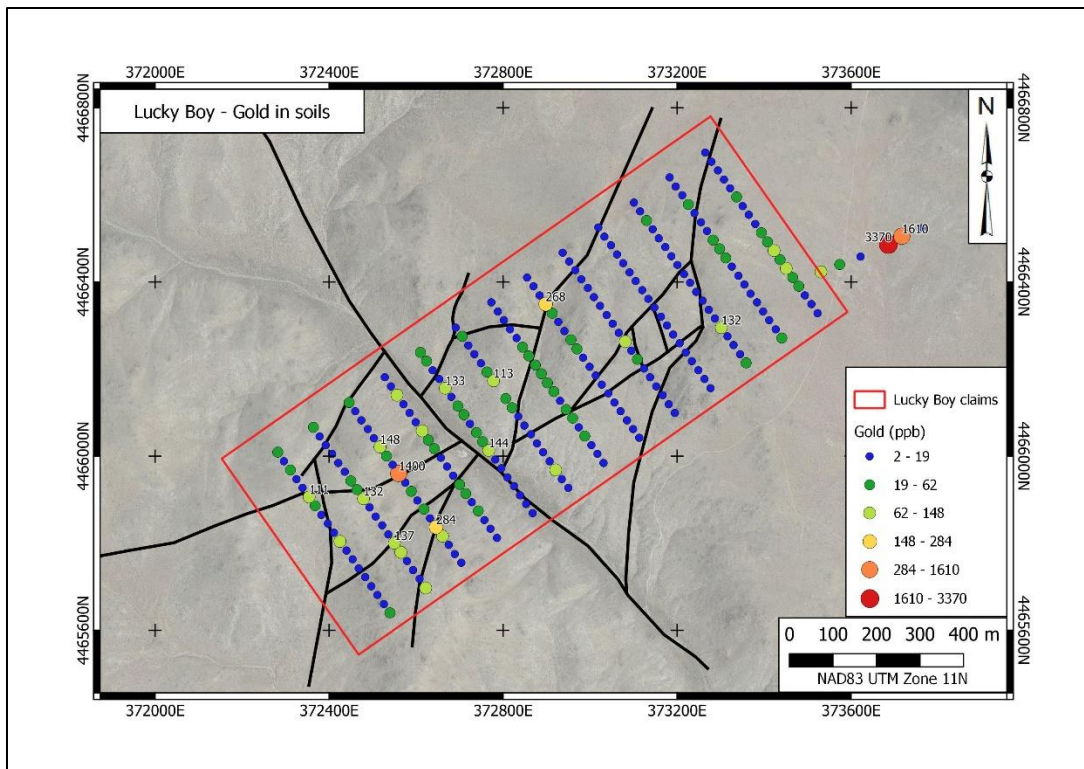
Lucky Boy - Property geology



Silver in rock samples



Silver in soil samples



Gold in soil samples

GEOLOGY & ECONOMIC MINERALIZATION

The Lucky Boy Property is underlain by likely Cretaceous granodiorite intruded into Triassic to Jurassic Auld Lang Syne metasedimentary rocks. Rocks in the area have been affected by syn-intrusion related faults and by later Basin and Range extensional faulting. In the immediate property area, structure mapped in limited exposures and satellite imagery indicate a network of conjugate ENE-NE and NW striking structures with known mineralization hosted in fault-controlled veins and associated clay-filled shears. White, opaque massive to ribbon-banded quartz hosts disseminated pyrite, chalcopyrite, galena and likely silver sulphides and is likely intrusion-related or mesothermal in origin. Grab samples from shaft and adit dumps have returned up to **1,535 g/t Ag** and 2.17 g/t Au. The soil geochemical response is quite elevated in gold in surprising contrast to the relatively low tenor of gold in rock samples. Silver is associated with the known showings and, together with gold, indicates several untested targets on NE striking inferred structures.



Lucky Boy mineralization & workings

PROPOSED EXPLORATION PROGRAM

Silver Range intends to conduct magnetic field and high frequency electromagnetic field surveys on the property to define and extend the known mineralization. This would be followed by trenching to define drill targets.

THIS PROPERTY IS AVAILABLE FOR OPTION OR JOINT-VENTURE.