



STINSON

www.silverrangeresources.com

TSX-V:SNG

- Structurally controlled high grade gold in Cambrian quartzite and Cambro-Ordovician carbonates.
- Persistent vein system at Ben Hur Mine returned grab samples to **248 g/t Au** and a best chip samples to **1.5 m @ 20.6 g/t Au**.
- At Stinson Mine, best grab sample returned **6.94 g/t Au** from a grab sample a chip sample across exposed mineralization returned **1.6m @ 8.16 g/t Au**.
- Most significant of a number of showings along a trend spatially related to the nearby Steptoe Warm Springs Pluton.

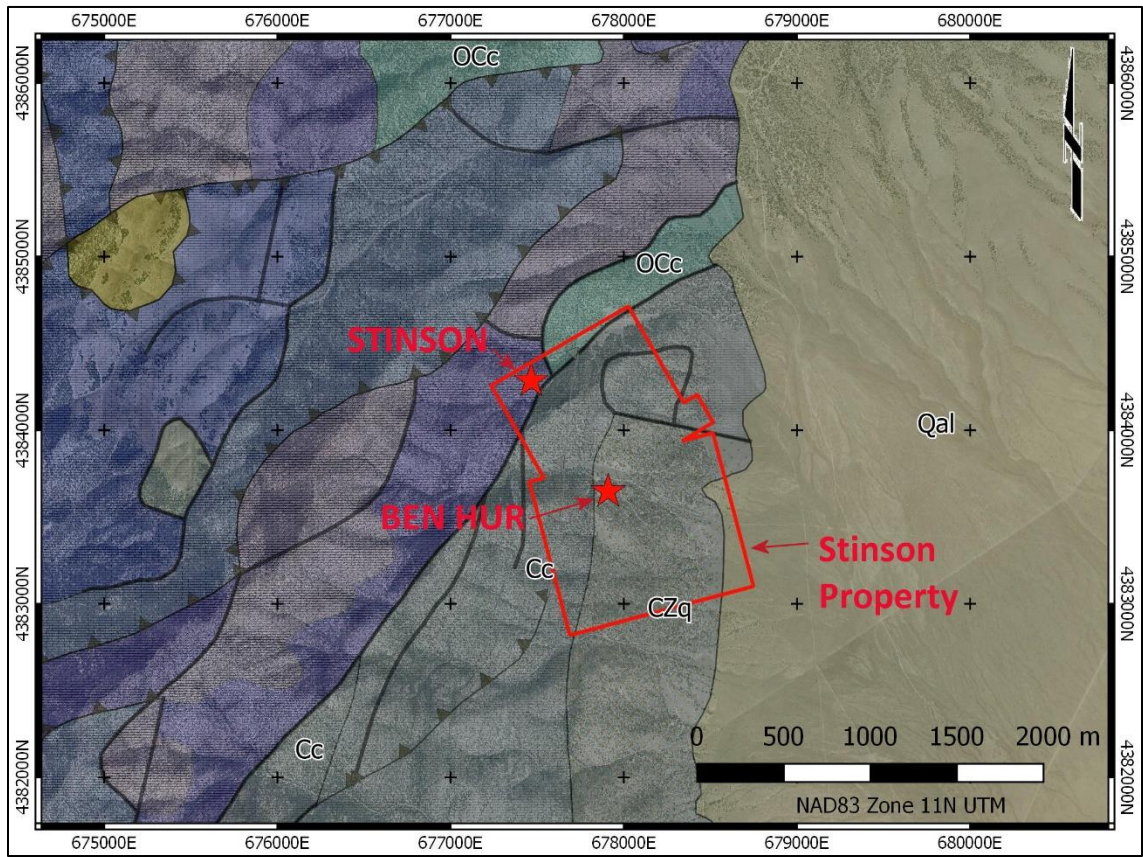
LOCATION & ACCESS



The Stinson property is located at 39°35' N, 115°56' W (Sections 19-20, Township 20N, Range 63E) in White Pine County, Nevada. The property is 38 km north of Ely on the east flanks of the Egan Range. The property can be accessed by 4WD vehicle from County Road 27 via a 4.5 km road branching from it north of Steptoe Ranch. The property is staked on lands administered by the Bureau of Land Management with no surface rights impairments.

EXPLORATION HISTORY

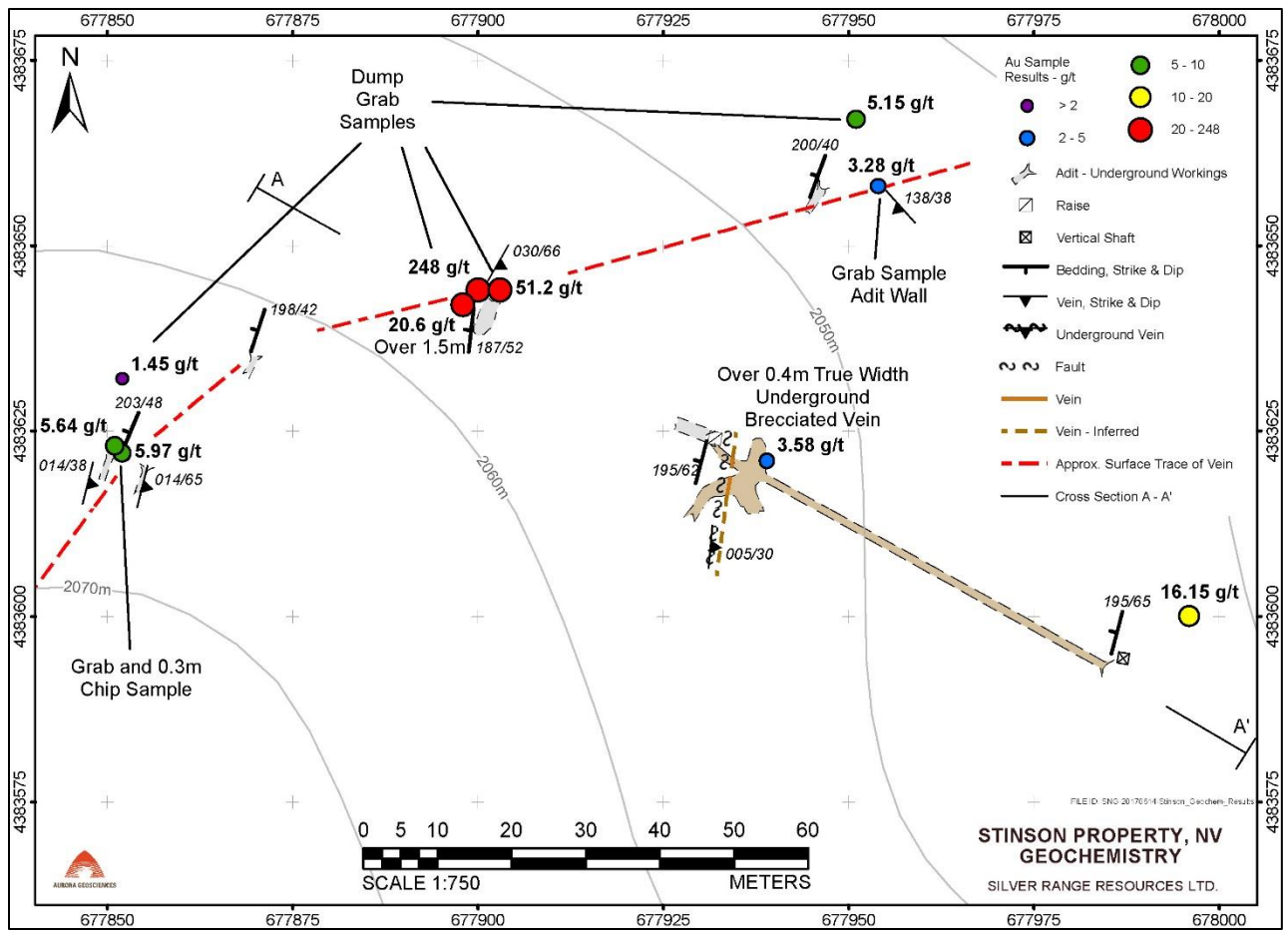
Mining in the property area dates from 1893 when Jack Stinson discovered and developed the Stinson Mine. He was followed by William Campbell who discovered and developed the Ben Hur Mine in 1894. He moved a three-stamp mill down to his nearby ranch (Steptoe Ranch). Documented production from the Ben Hur mine from a brief period ending in 1916 was 700 ounces. Production at the mine continued into the early 1940's. Recent exploration in the area occurred during the early 1980's when Noranda ran a large program that included this area and showings north and south of the property. There has been no recent exploration nearby since then and Silver Range staked the property in 2016.



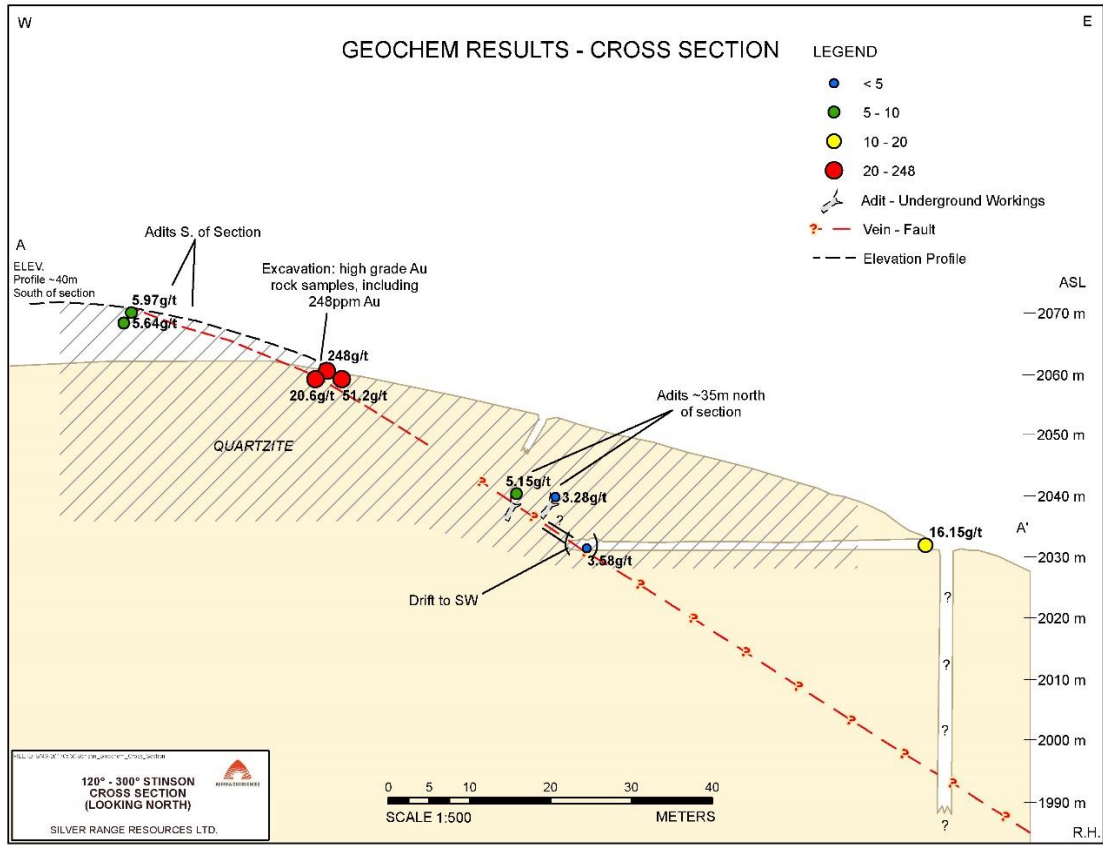
Property geology



Clockwise from top left: One of the upper adits at Stinson; main adit at Ben Hur; mineralization at Stinson; sampling Stinson lower adit.



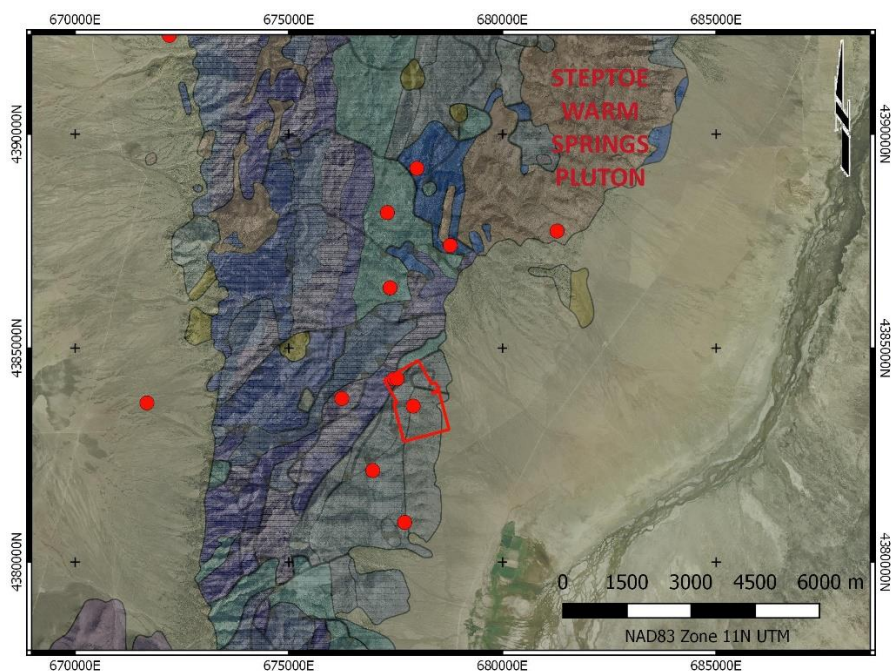
Plan view – Ben Hur mine



Cross section looking north – Ben Hur Mine

GEOLOGY & ECONOMIC MINERALIZATION

The Stinson Property is underlain by Cambrian quartzites (**CZq**) overlain by Cambro-Ordovician carbonate platform rocks (**CC / OCC**). At the Stinson Mine, gold occurs with quartz veins in a southwest striking, moderately east dipping shear zone in Cambro-Ordovician carbonates. Sampling at Stinson during 2016 returned best results of **6.94 g/t Au** from a grab sample and 3.8 m @ 2.57 g/t Au including **1.6m @ 8.16 g/t Au** in a chip sample across the shear zone. Three of 15 samples collected at Stinson returned more than 1 g/t Au. At the Ben Hur Mine, work in 2016 and 2017 defined a north striking, gently east dipping shear zone with quartz veining and hematite alteration cutting Cambrian quartzite. The shear has been traced for approximately 100 metres on surface and was intersected in underground workings 40 m down dip from the surface exposure. Surface grab sampling returned up to **248 g/t Au** with 7 of 27 samples collected at Ben Hur returning greater than 1 g/t Au. A chip sample across exposed surface mineralization near the highest grade grab sample returned **1.5 m @ 20.6 g/t Au**. Grab samples from dump material at workings along the vein 50 metres southwest and northeast of this location returned **5.97 g/t Au** and **5.15 g/t Au** respectively. The shear zone is exposed underground in a cross-cut 40 metres east and down-dip of the surface exposures. Gold occurrences at the Stinson and Ben Hur Mines may be part of a much larger structurally-controlled hydrothermal system. The gold occurrences on the Stinson Property together with six other MRDS showings are associated with north-striking faults and contacts in a 7 kilometre long corridor. This terminates in the Steptoe Warm Springs Pluton, 3 kilometres north of the property.



Stinson Property and other gold showings in the area, possibly related to the Steptoe Warm Springs Pluton

PROPOSED EXPLORATION PROGRAM

Geophysical surveys followed by drilling are recommended at the Stinson property to investigate the depth extent of the high-grade mineralization found at surface.

THIS PROJECT IS AVAILABLE FOR OPTION, JOINT VENTURE OR SALE.