

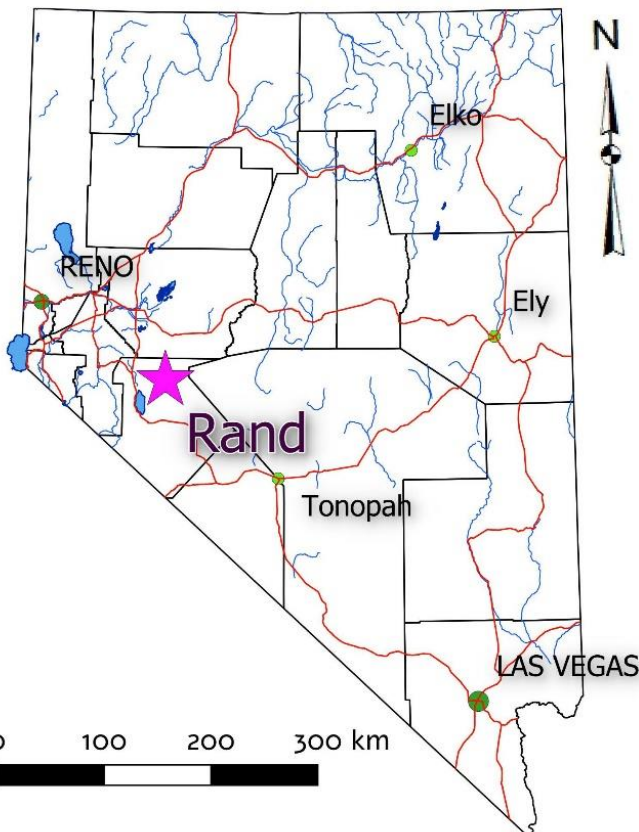


# RAND

www.silverrangeresources.com

TSX-V:SNG

- Intrusive-hosted copper-gold prospect
- Shafts and adits on three showings.
- Initial grab sampling returned up to **35.5 g/t Au & 19.1% Cu** .
- Coincident gold and copper in soil responses.

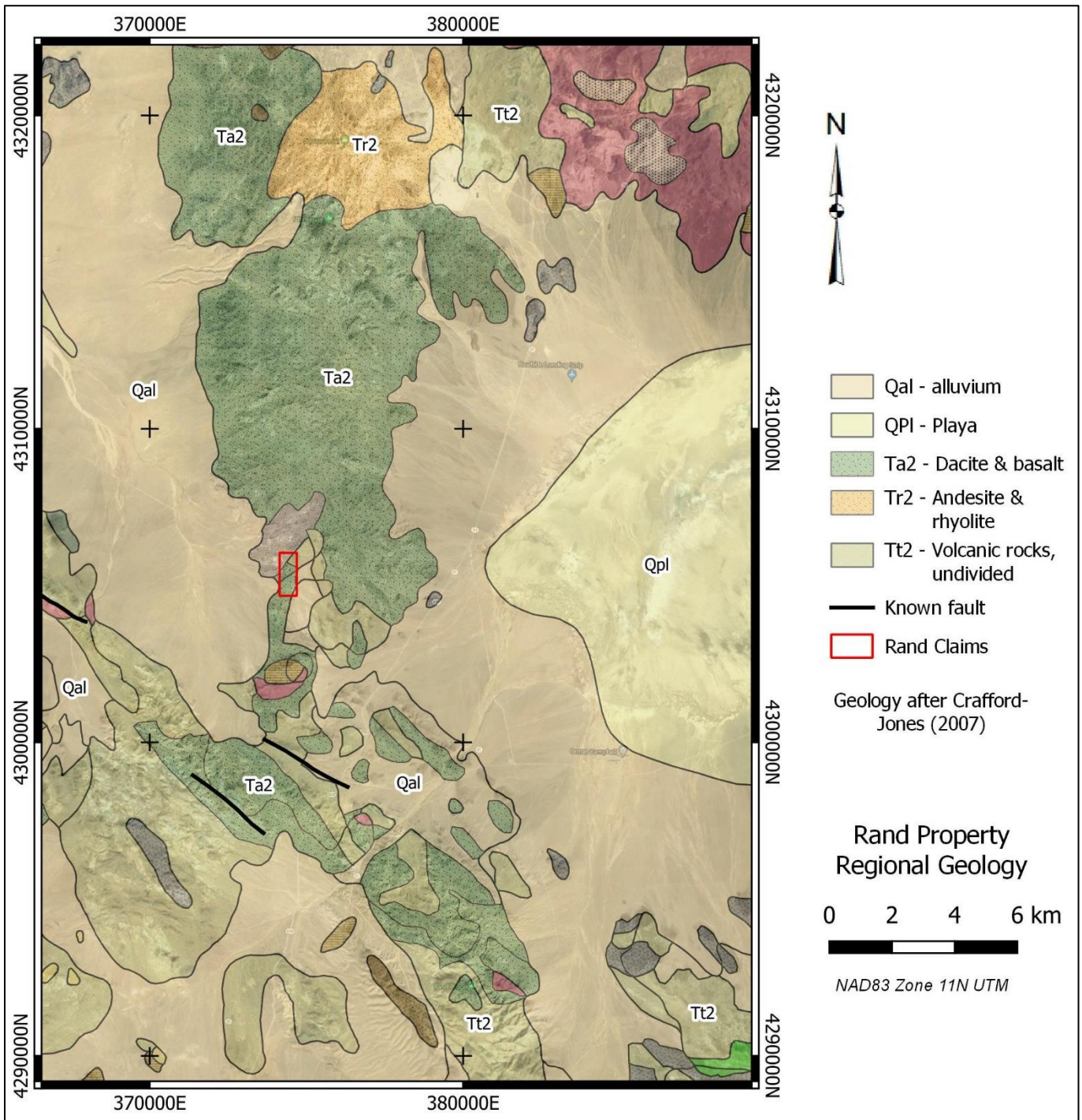


## LOCATION & ACCESS

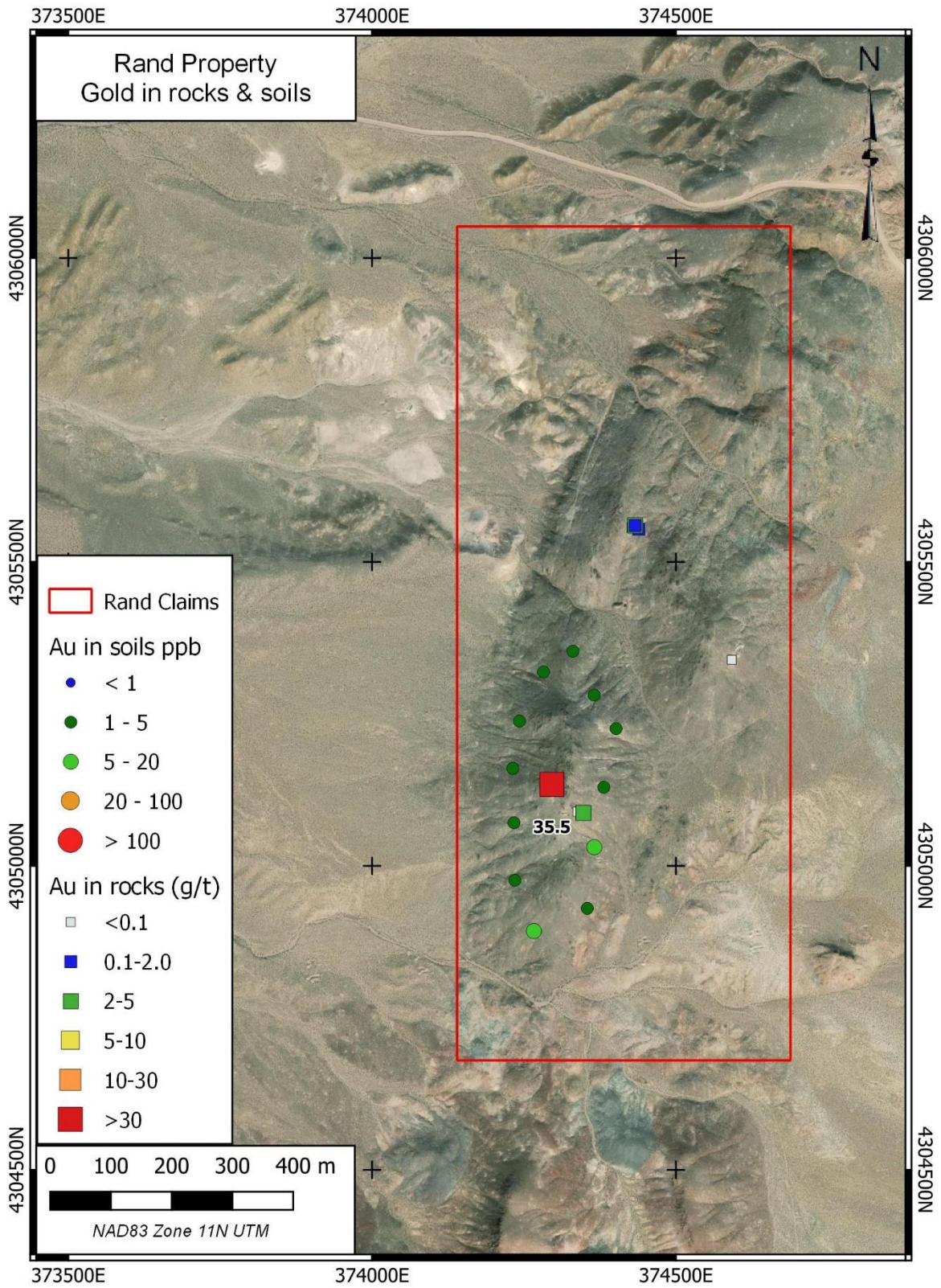
The Rand Property is located at 38° 53'N 118° 27' W, approximately 44 km northeast of Hawthorne in Mineral County. The property can be reached by road with a 4x4 vehicle via the Deadhorse Wells road. The property consists of 9 claims in Section 23, Township 12N, Range 31¼ E, staked on BLM land with no surface impairments.

## EXPLORATION HISTORY

There are no MRDS showings in the target area and the area lies between the Rawhide Mining District to the north and the Rand Mining District to the south. There are a number of workings at the site including a drill pad Two NBMG samples were collected from this area. Sample 3704 collected from the north end of the target returned AA analyses of 47.2 ppm Au, 19.0 ppm Ag, 3,200 ppm Cu and 38 ppm As from a sample described as *“from dumps associated with incline and adit...copper oxides sulfides”*. Sample 3703 collected further south returned AA analyses of 4.20 ppm Au, 1.3 ppm Ag, 51.0 ppm As, and 3,200 ppm Cu from a sample described as *“from dump associated with mineralized vein in granite, copper oxides and sulfides”*. Silver Range examined, sampled and staked the property in September 2016.



Regional geology



Gold in rocks & soils

## PROPERTY GEOLOGY & MINERALIZATION

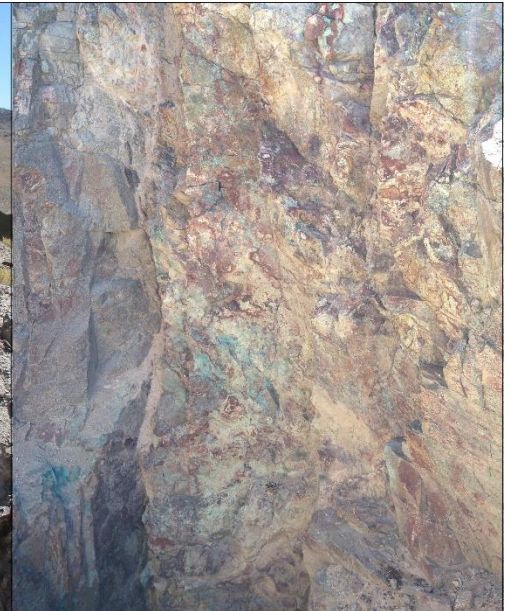
Regional mapping indicates that the Rand Property is underlain by Tertiary intermediate volcanics (rhyodacite, andesite and tuff) (**Ta2**) and alluvial sediments (**Tt2**). To the north, this is overlain by Esmeralda Formation shale, sandstone, conglomerate and rhyolite (**Ts3**). Quaternary alluvial sediments blanket the lower slopes and valleys adjacent to the showing (**Qal**). There are no mapped faults in the area. It is 22 km east of an inferred Tertiary volcanic center mapped west of Gabbs on the east side of Alkali Flats. At property scale, it is clear that the mineral showings are centred on an unmapped granitic intrusive. Gold, silver and copper mineralization occur in steeply dipping veins and shears cutting the intrusive rocks. These are individually up to 1 m wide and occur in small networks. Initial investigations returned grab samples assaying up to **35.50 g/t Au, 35 g/t Ag and 19.1% Cu** with 3 of 12 samples collected returning over 1 g/t Au. The average copper value of all samples collected was **5.2 % Cu**.



(a) High grade secondary copper



(b) Shear zone exposed in workings



(c) Shaft face

## PROPOSED EXPLORATION PROGRAM

Silver Range intends to conduct additional geologic mapping and geophysical surveys to identify a drill target on this property.

***THIS PROJECT IS AVAILABLE FOR OPTION, JOINT VENTURE OR SALE.***