



The High Grade Precious Metals Prospect Generator



Property Portfolio
November 2021

Certain information regarding the Company contained herein may constitute forward-looking statements within the meaning of applicable securities laws. Forward-looking statements may include estimates, plans, expectations, opinions, forecasts, projections, guidance or other statements that are not statements of fact. Although the Company believes that the expectations reflected in such forward-looking statements are reasonable, it can give no assurance that such expectations will prove to have been correct. The Company cautions that actual performance will be affected by a number of factors, many of which are beyond the Company's control, and that future events and results may vary substantially from what the Company currently foresees. Discussion of the various factors that may affect future results is contained in the Company's Annual Report which is available at www.sedar.com. The Company's forward-looking statements are expressly qualified in their entirety by this cautionary statement.

The Keg Deposit NI 43-101 disclaimer

At a 16 g/t silver cut-off, the Keg inferred resource is 39.76 million tonnes grading 30.25 g/t silver, 0.26% lead, 0.77% zinc and 0.15% copper. For further details see technical report entitled "Geology, Mineralization, Geochemical Surveys, Diamond Drilling, Metallurgical Testing and Mineral Resources at the Keg Property" dated December 19, 2012 and amended May 27, 2013 and filed on SEDAR.

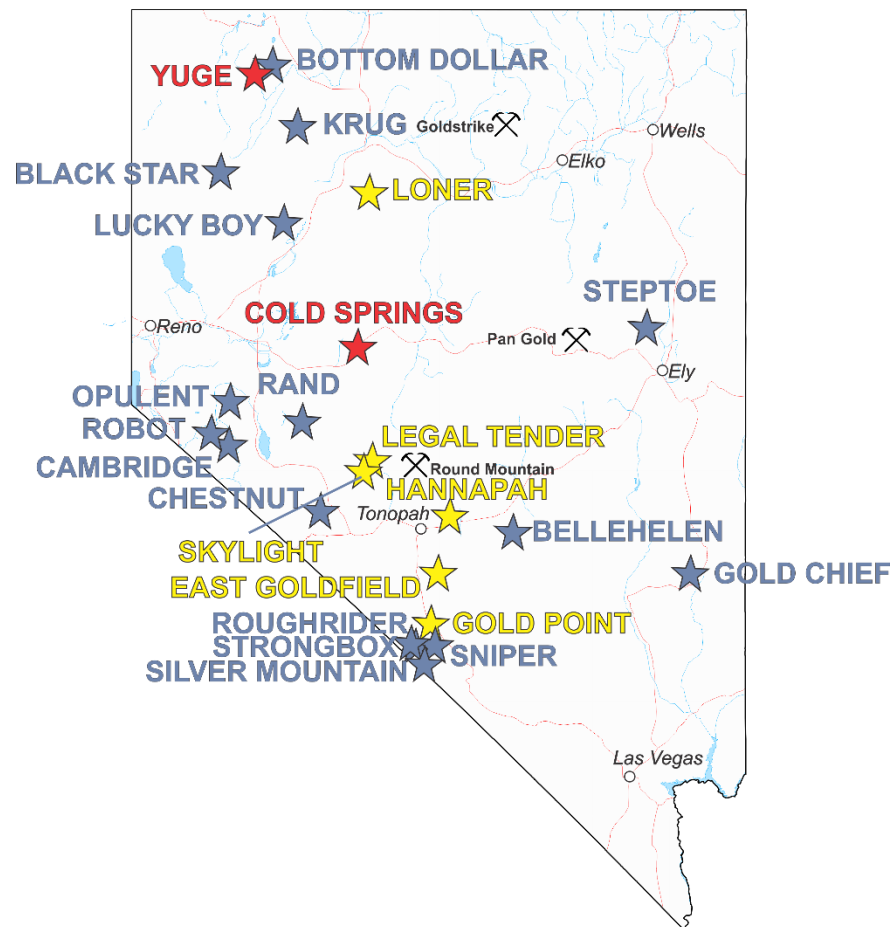
The Mel Main Zone Deposit NI 43-101 disclaimer

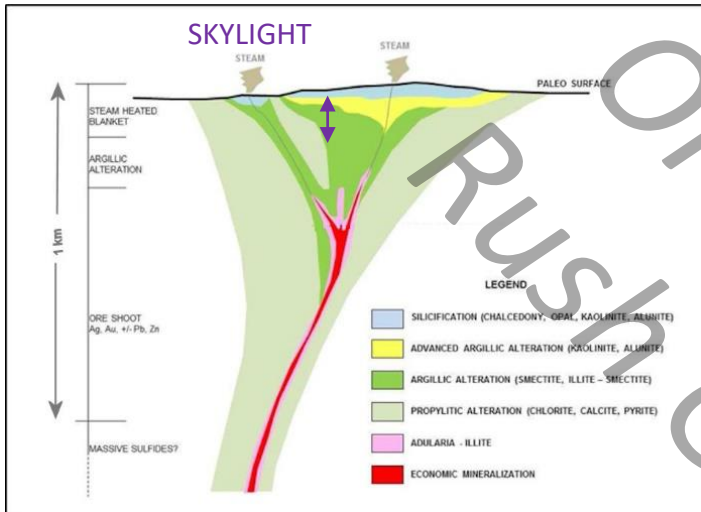
The Mel Main Zone hosts an inferred resource of 5.38 million tonnes grading 6.45% zinc, 1.85% lead and 44.79% barite (BaSO₄), at a cut-off grade of 5.0% zinc-equivalent. Zinc-equivalence was calculated using metal prices of US\$0.89/lb zinc and US\$0.96/lb lead and assuming 90.3% zinc recovery and 97.7% lead recovery. Further details of the estimation procedure are available in a NI 43-101 report authored by Giroux Consultants Ltd. and H. Leo King, P. Geo., dated November 12, 2014 and filed on SEDAR.

All technical information contained in this presentation pertaining to projects located in Yukon has been approved by Matthew R. Dumala, P.Eng., a geological consultant to Silver Range Resources and qualified person for the purposes of NI 43-101.

All technical information contained in this presentation pertaining to projects located in NWT, Nunavut and Nevada has been approved by Michael Power, P.Geo., President and C.E.O of Silver Range Resources and qualified person for the purposes of NI 43-101.

- ★ Silver Range Resources Ltd. Nevada Property Locations
- ★ Project Under Option
- ★ Royalty Interest





- Royston Hills, Nye County.
- Fully preserved epithermal system including bedded silica caps.
- Epithermal clay alteration, locally high temperature dickite in linears on flanks of the edifice.



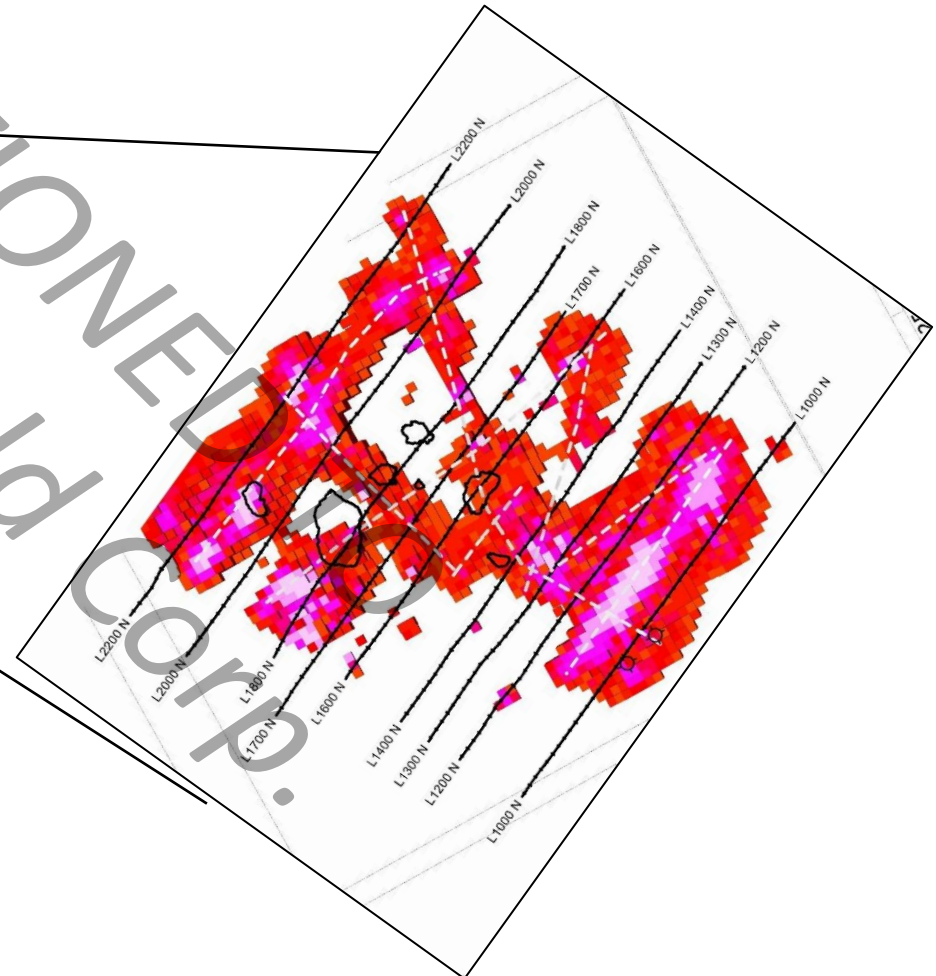
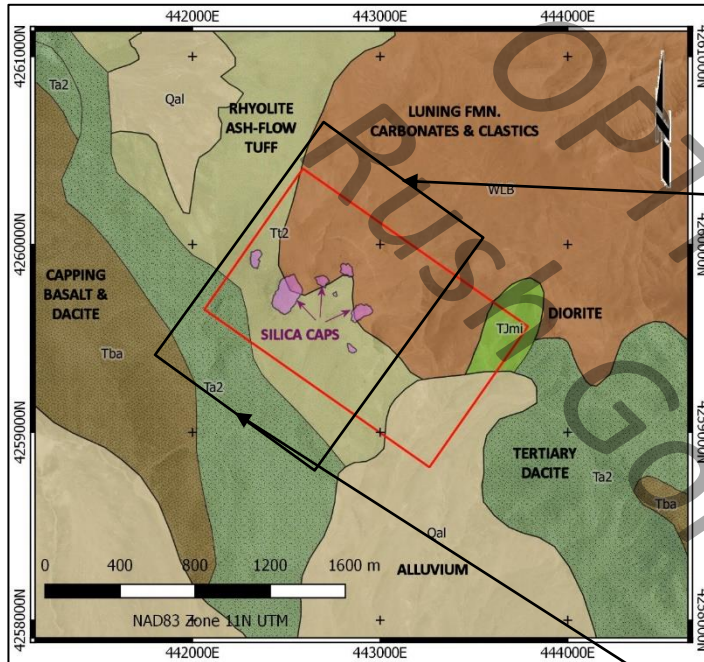
Property viewed from northwest



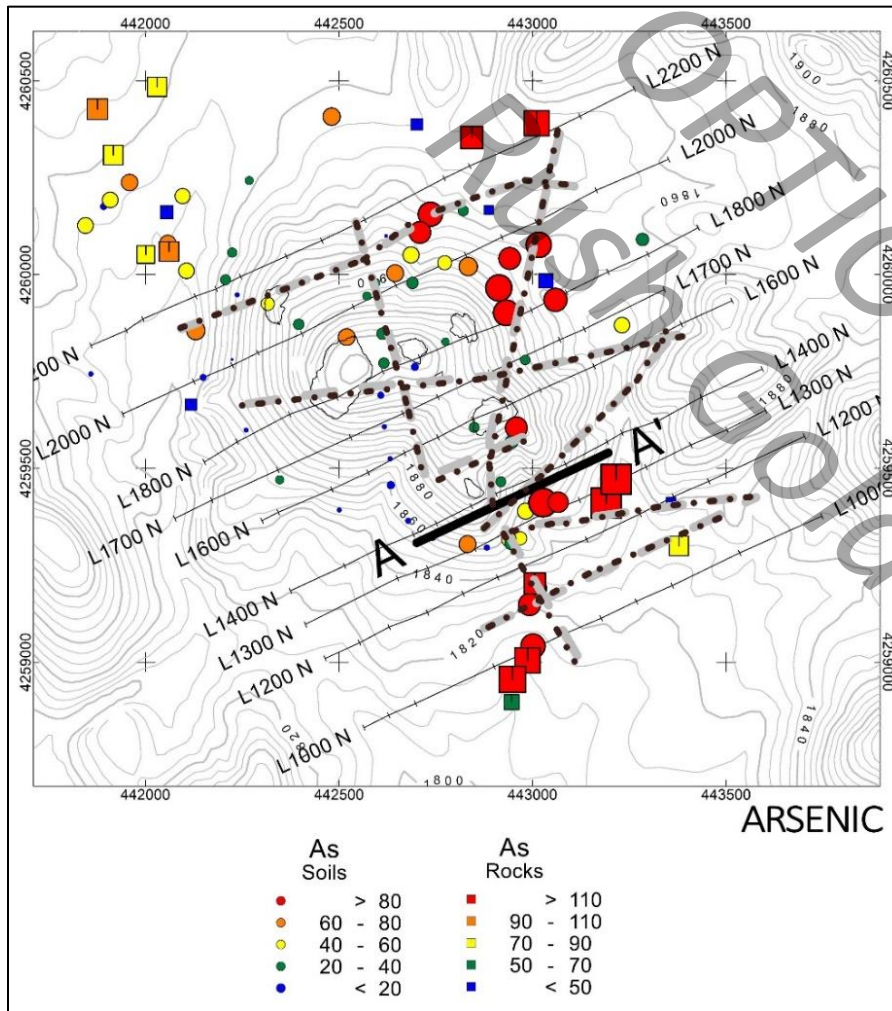
Flat-lying bedded silica



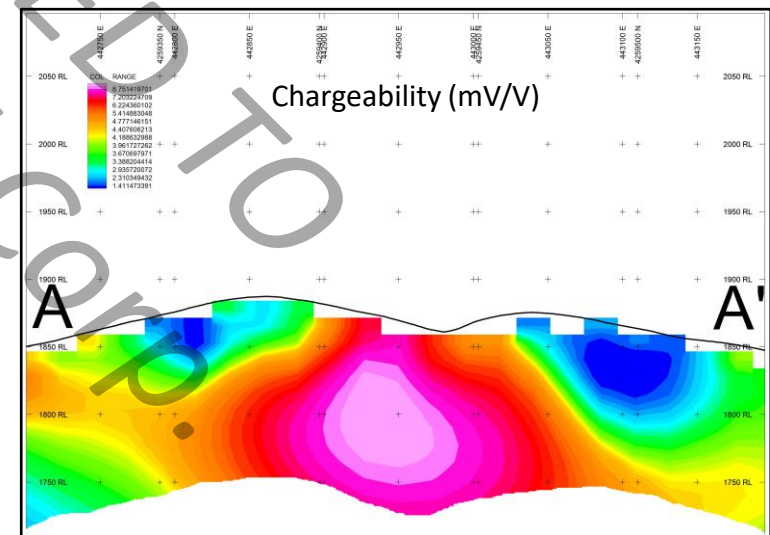
High temperature clay alteration – SW flank of edifice



- 3D IP/resistivity survey defined a network of linear chargeability highs
- Coincident with clay alteration zones on flanks of the edifice
- Survey defined the hydrothermal architecture of the epithermal system



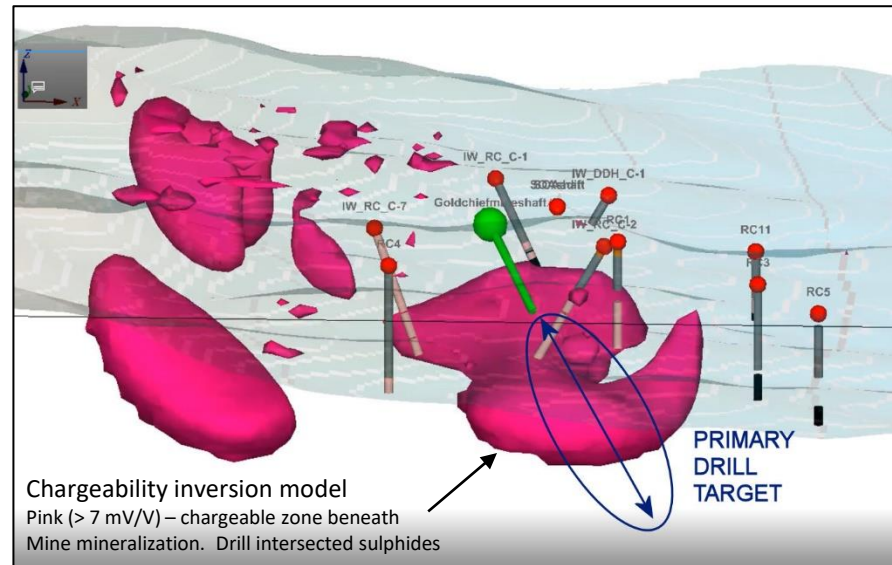
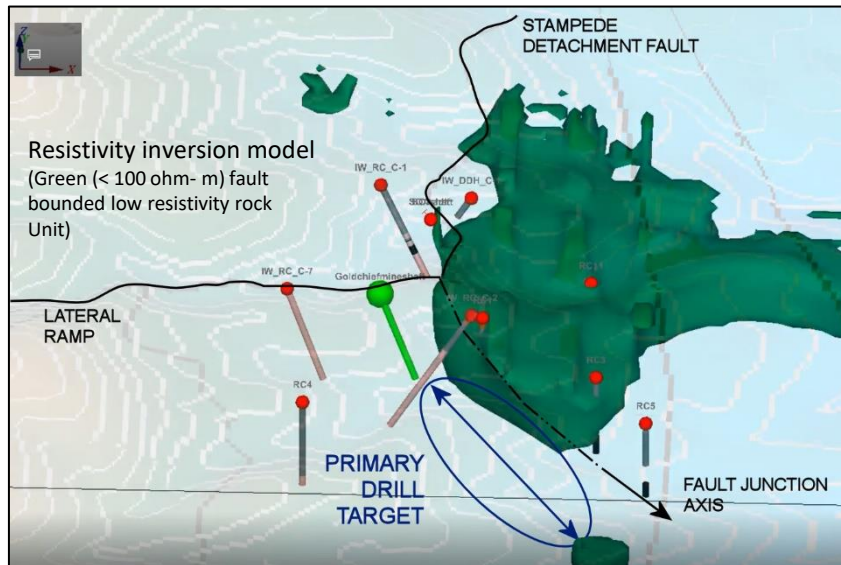
- Surface geochemical support (leakage anomalies) in Au, Ag, As & Sb
- 4 drill targets defined
- Fully permitted & bonded: ready for drill testing



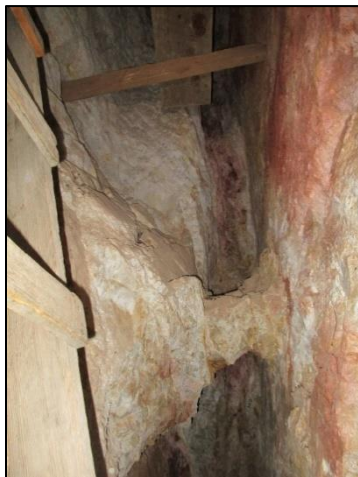
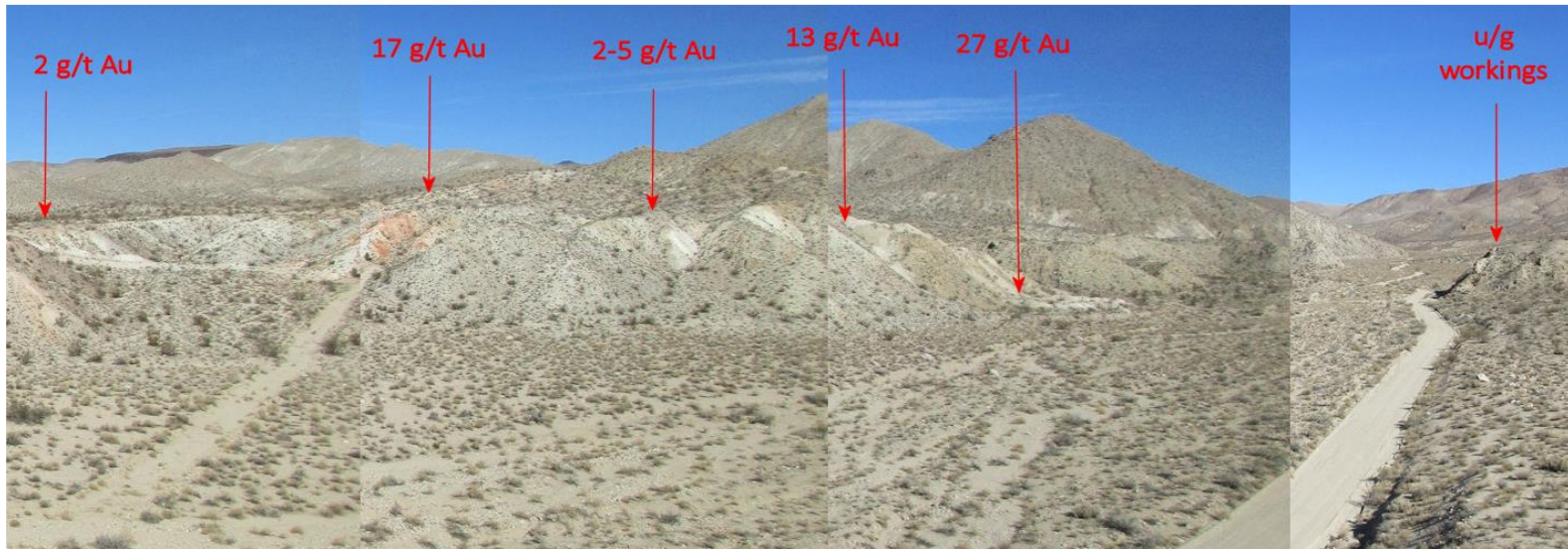


- Carbonate-hosted gold in normal and detachment faults
- Past production – 5200 t @ **6.18 g/t Au** (run of mine)
- Recent sampling:
 - 14 m @ 1.93 g/t Au
 - **4.58 g/t Au** (1 m chip)
- 3D IP survey defines two targets:
 - Structural control on down-dip extension of mine mineralization
 - Larger chargeability anomaly at depth
- Size potential: Open structural fairway to the east

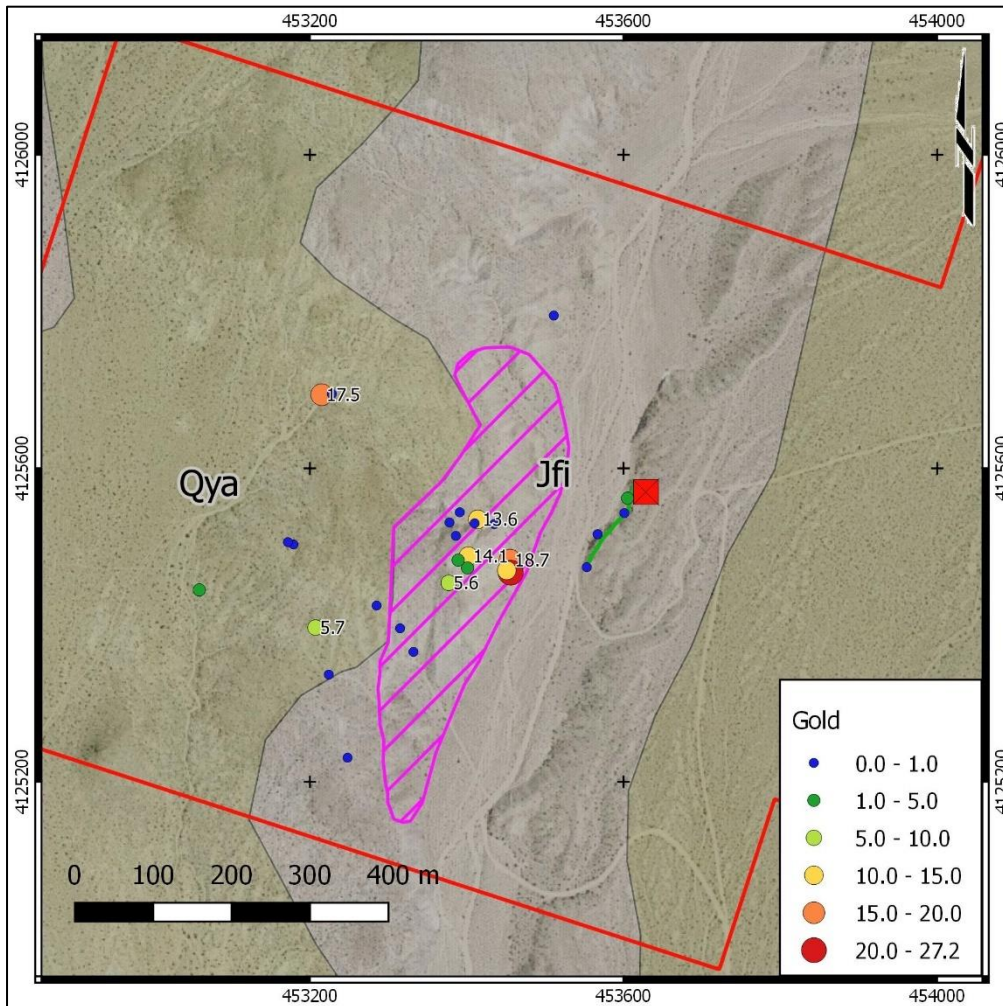
DRILL TARGETS DEFINED



DRILL DOWN DIP FROM MINE WORKINGS THEN TEST DEEP IP ANOMALY

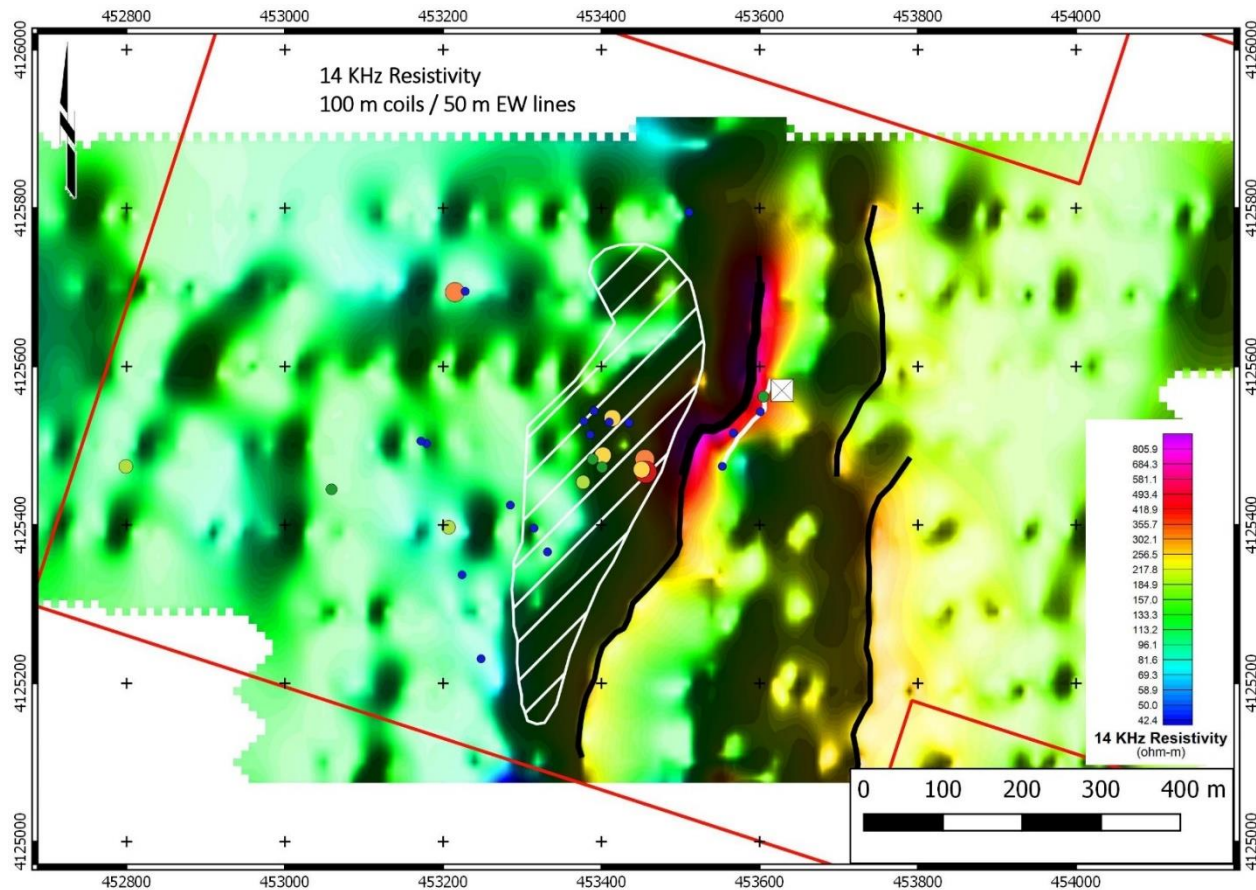


- Widespread surface gold to **27.1 g/t Au**
 - 25 of 64 > 1 g/t Au
 - **14 of 64 > 5 g/t Au**
 - 2017 chip sampling within the broad alteration zone returned **20 m @ 0.923 g/t Au**
- Past placer & underground hard rock production
- Granite hosted / structurally controlled veins & breccia



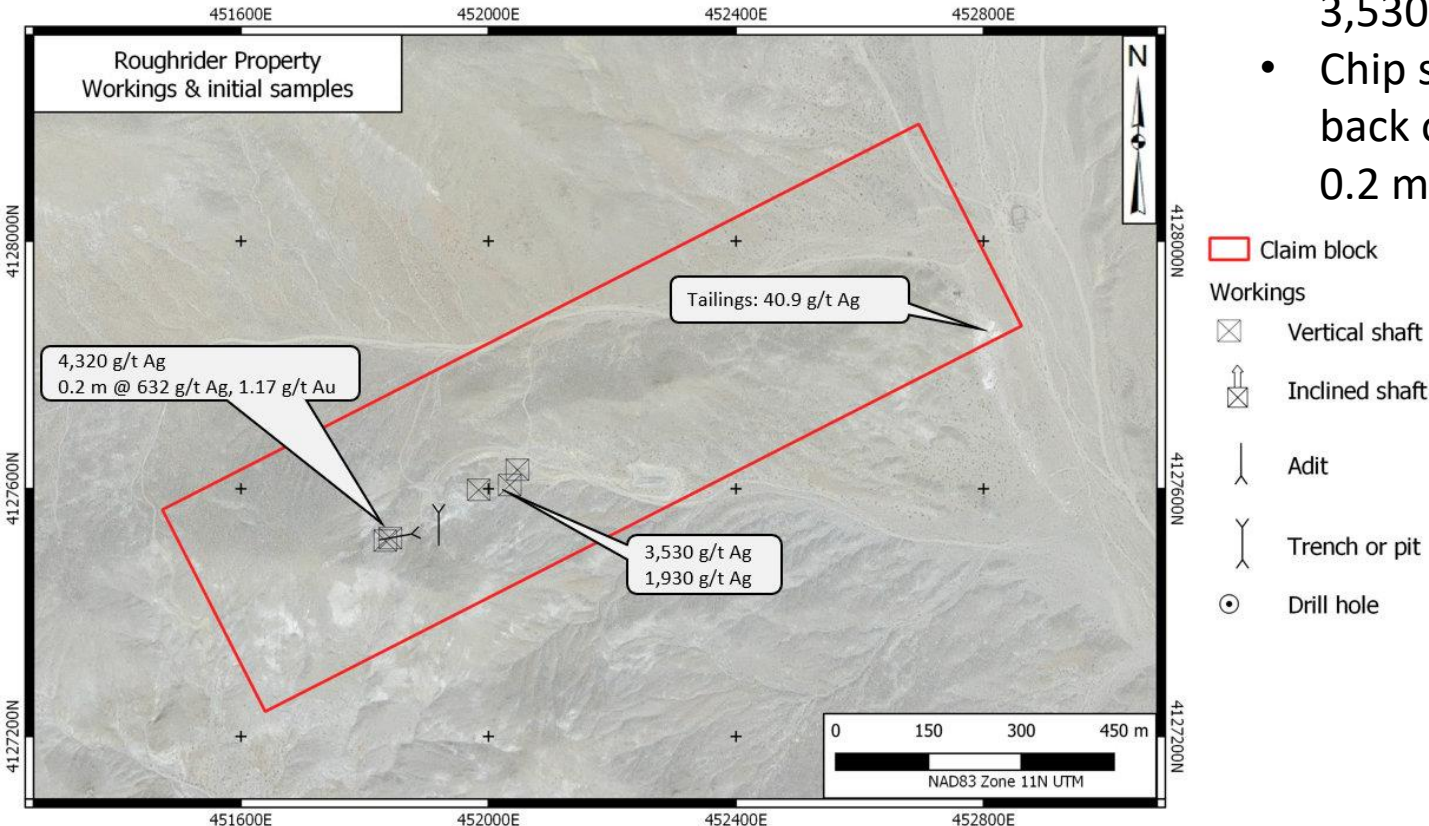
- Gold in bedrock straddling Tule Canyon
- Host is Jurassic granite (**Jfi**), exposed near Tule Creek
- Wide alteration zone on west side of canyon (kao-ill-smect-lim-hem ± calc ± jar)
- Underground mining (narrow stopes) east side of the creek

DRILL TARGET DEFINED BY EM / MAGNETIC FIELD SURVEYS



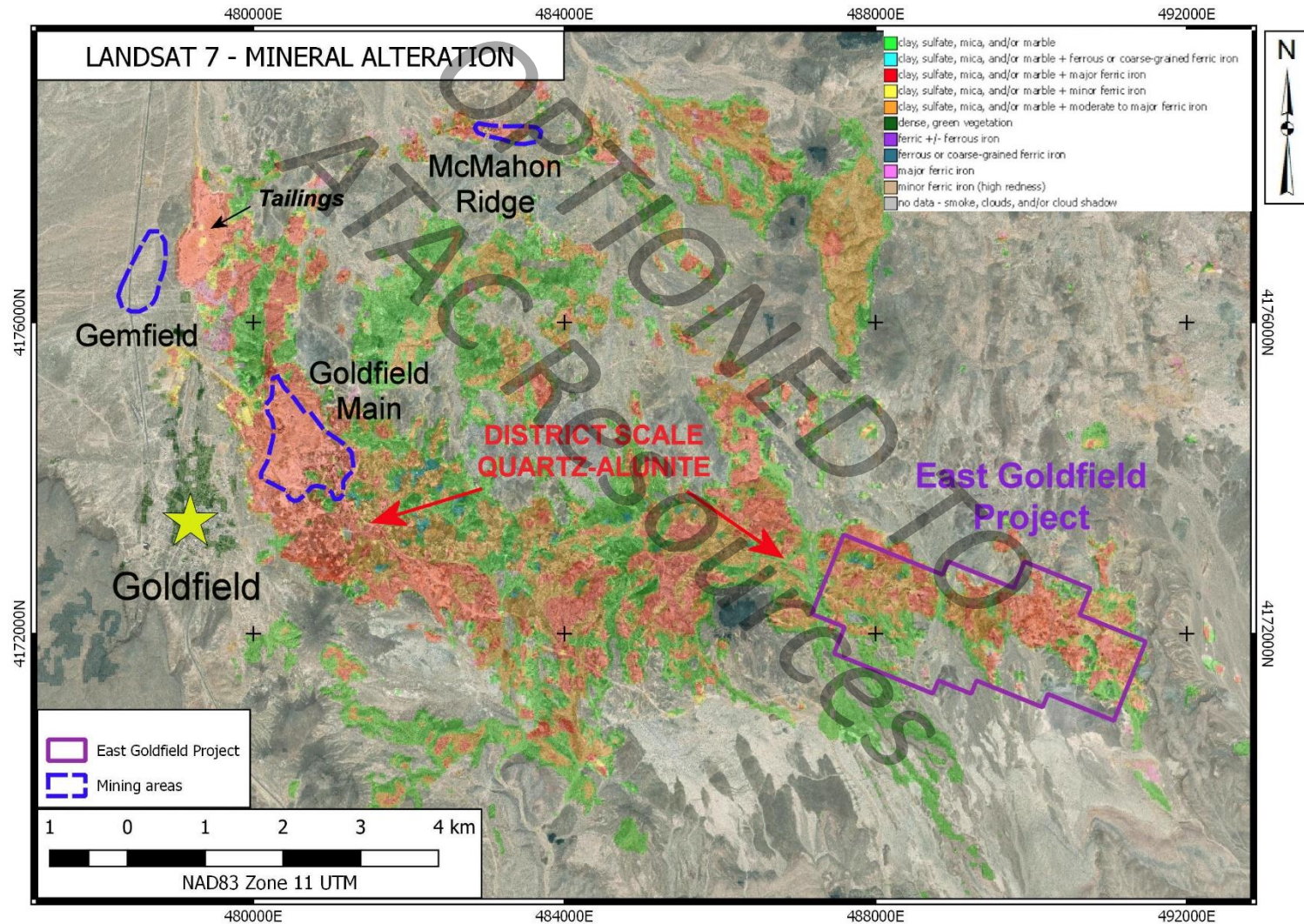
Underlain by Jurassic Sylvania Pluton granodiorite cut by steeply-dipping NE trending structures hosting mineralized veins and breccia within shears.

- Multiple historical shafts and adits
- Grab sampling returned up to 4,320 g/t Ag and 3,530 g/t Ag
- Chip sample from the back of an adit returned 0.2 m @ 632 g/t Ag.



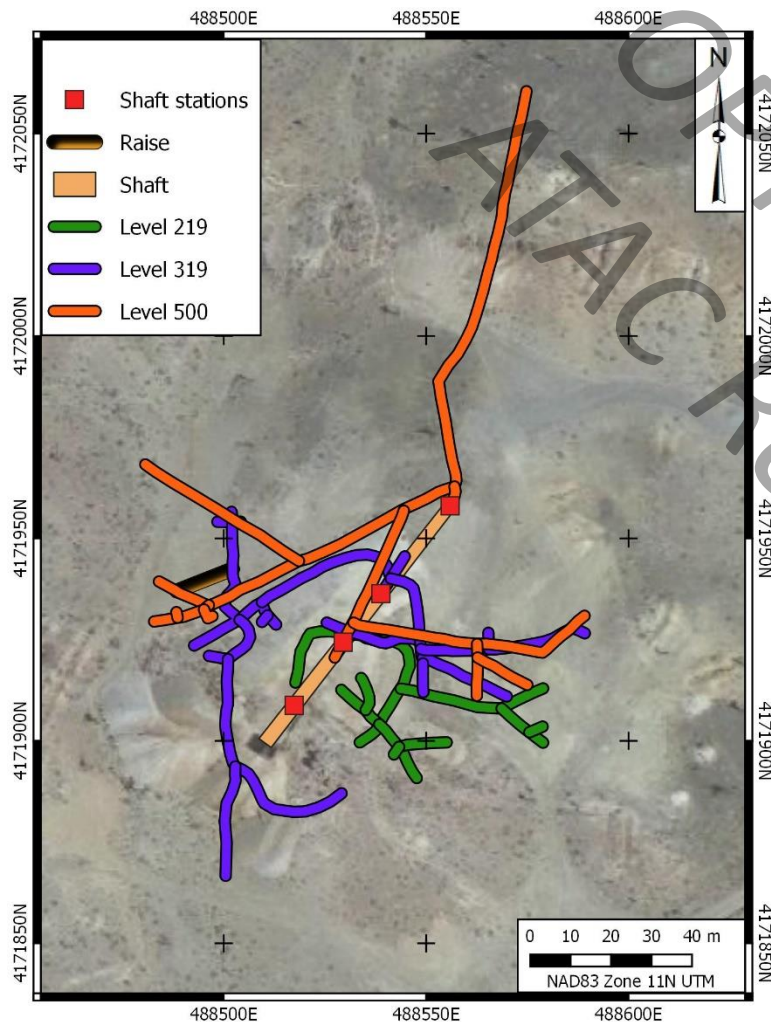


- High sulfidation epithermal mineralization
- Structurally controlled acid ground preparation (vuggy silica / alunite)
 - Later stage Au (+Cu, Ag) mineralization at higher pH
- Host: Milltown Andesite, Dacite & earlier units (Sandstorm Formation, basement rocks)
- Goldfield Main Deposit (1903-1947)
 - 7.0Mt @ 18.78 g/t Au (4.2 Moz Au) (Vikre 1989)
- Gemfield Deposit
 - 21.2 Mt @ 0.88 g/t Au (600 Koz Au) (Micon 2013)
- McMahan Ridge Deposit
 - 4.6 Mt @ 1.36 g/t Au (199 Koz Au) (Micon 2013)



- On the property: same rocks as host Goldfield Main and MacMahon Ridge deposits
- In addition, heterolithic breccia with clasts of both Milltown Andesite & Goldfield Dacite clasts
 - Locally fault bounded
 - Intensely altered
 - Mis-identified as a landslide unit
 - Locus of anomalous geochemical responses





- Tom Keane Mine – most significant showing on the property
- U/G development by Goldfield Deep Mines Company prior to 1931
 - 70' level: 110 feet
 - 219' level: 530 feet
 - 319' level: 1140 feet
 - 500' level: 1370 feet
 - Two compartment shaft
 - Raise from 500' to 319' level
- Assays (1935):
 - 319' level: 11.6 m @ 2.88 g/t Au
 - 219' level: 3.04 m @ 4.11 g/t Au

- Drilling near Tom Keane Mine by Metallic Ventures Gold Inc. – 2003
 - 10 holes
 - Drilled in 2 acre area near Tom Keane Mine
 - footage / locations not reported
 - Intercepts reported in 9 of 10 holes.

Hole	From (m)	To (m)	Interval (m)	Au (g/t)
TK-1	65.55	68.60	3.05	0.69
	89.94	97.56	7.62	0.69
TK-2	80.79	88.41	7.62	0.69
including	83.84	85.37	1.52	1.71
	100.61	103.66	3.05	1.37
TK-3	56.40	60.98	4.57	0.69
	85.37	97.56	12.20	0.69
including	86.89	88.41	1.52	1.78
TK-4	51.83	56.40	4.57	2.40
including	54.88	56.40	1.52	4.05
	65.55	70.12	4.57	0.69
	82.32	83.84	1.52	1.37
TK-5	65.55	109.76	44.21	1.03
including	65.55	73.17	7.62	1.71
TK-6	67.07	89.94	22.87	2.88
including	70.12	74.70	4.57	8.23
	92.99	102.13	9.15	1.61
including	92.99	96.04	3.05	3.46
	108.23	115.85	7.62	0.38
	129.57	135.67	6.10	0.51
TK-7	85.37	102.13	16.77	1.03
including	99.09	100.61	1.52	3.15
	169.21	176.83	7.62	0.69
	190.55	193.60	3.05	0.69
TK-8	70.12	76.22	6.10	0.48
	96.04	103.66	7.62	0.79
TK-10	71.65	106.71	35.06	0.69
	150.91	161.59	10.67	0.34

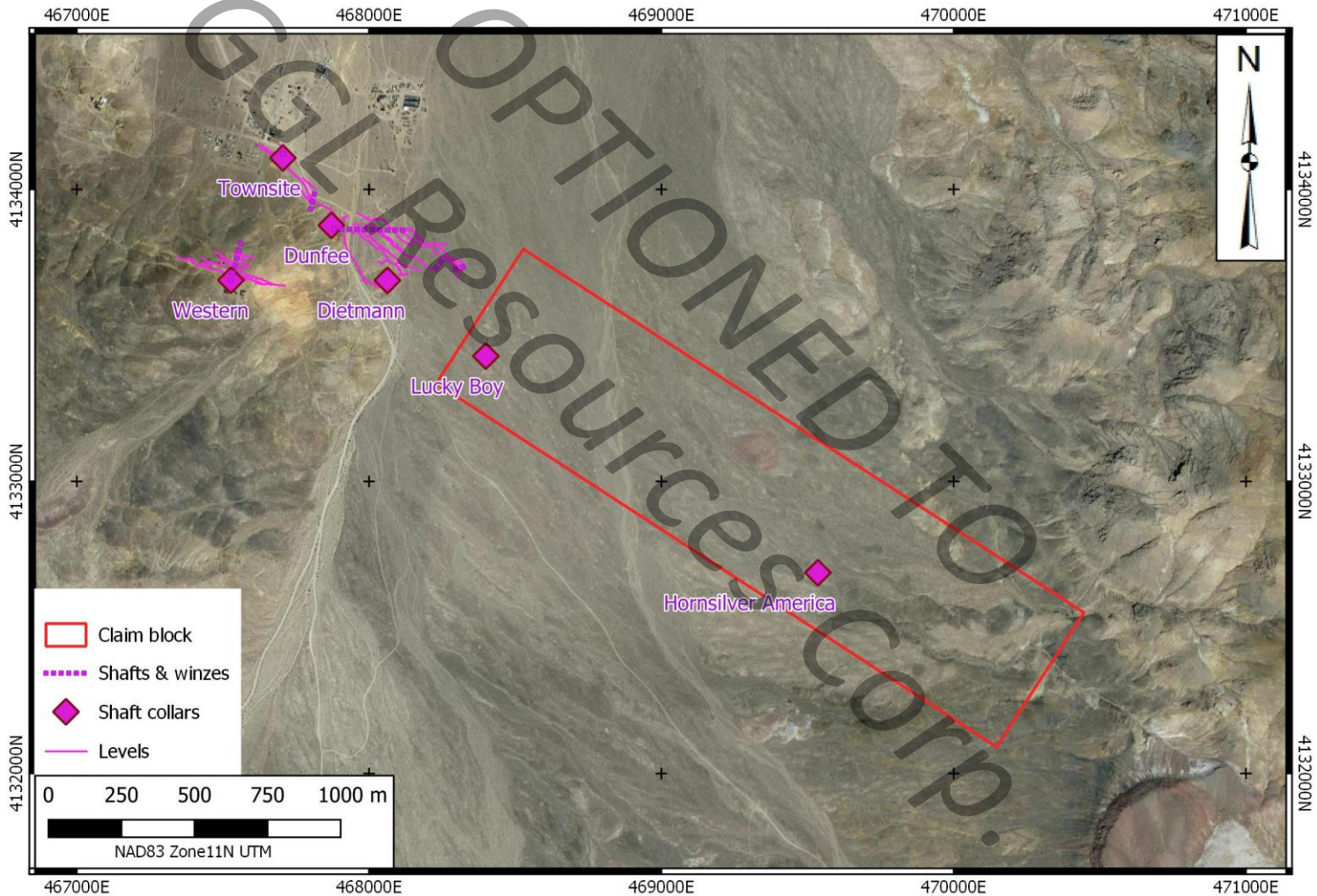
Why look here?

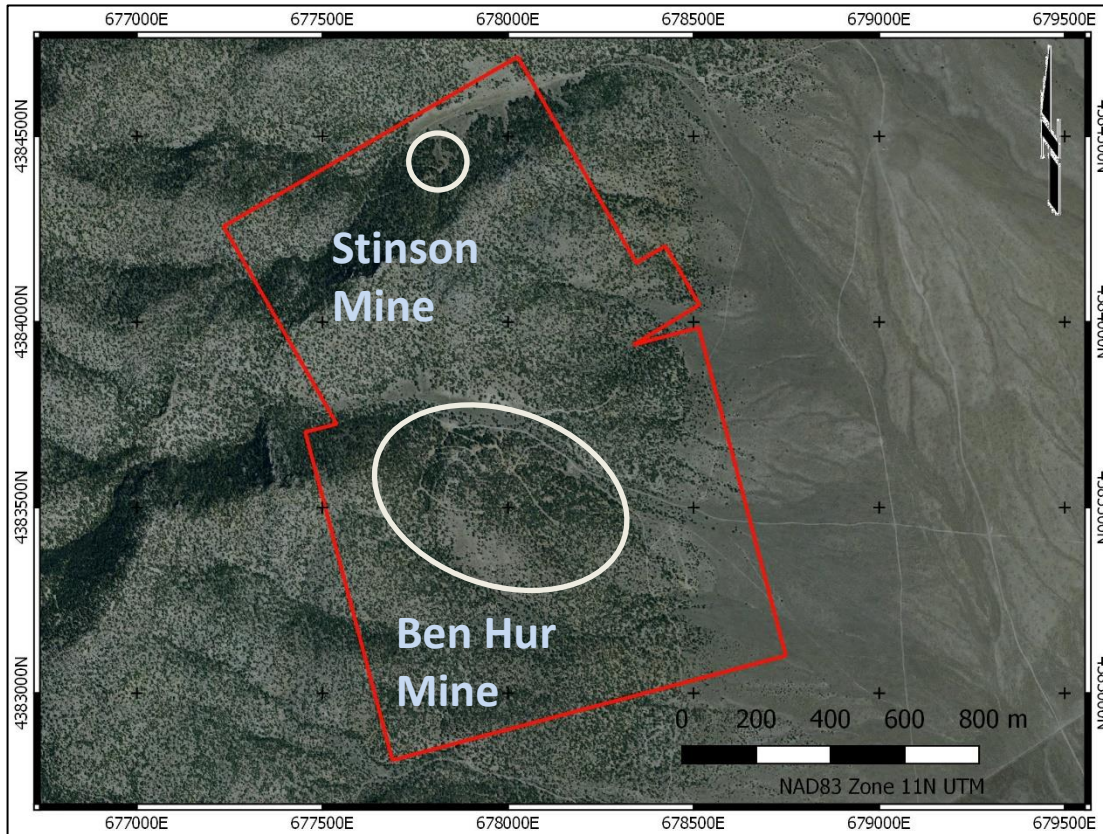
- ✓ Near 3 deposits with >5 M oz Au
- ✓ Same:
 - ✓ Rocks
 - ✓ Style of mineralization
 - ✓ Alteration intensity
- ✓ A fertile system: geochemical leakage & nearby deposits
- ✓ Large prospective hosts
- ✓ Gold intersections at depth





- Eastern extension of Gold Point mining district, southwestern NV
- Historic production from several nearby mines (+ 28,000 oz Au)
- Similar setting, rock formation and style of mineralization as at Mineral Ridge (Scorpio Gold)





- Expanded in 2021: Now 7 claim blocks covering 8 prospects or small mines in a 47 square kilometre area of interest
- Larger structurally controlled, intrusion related target
- High grade surface showings with rock samples returning 5,240 g/t Ag, 248 g/t Au and 24.6 g/t Au

STINSON MINE

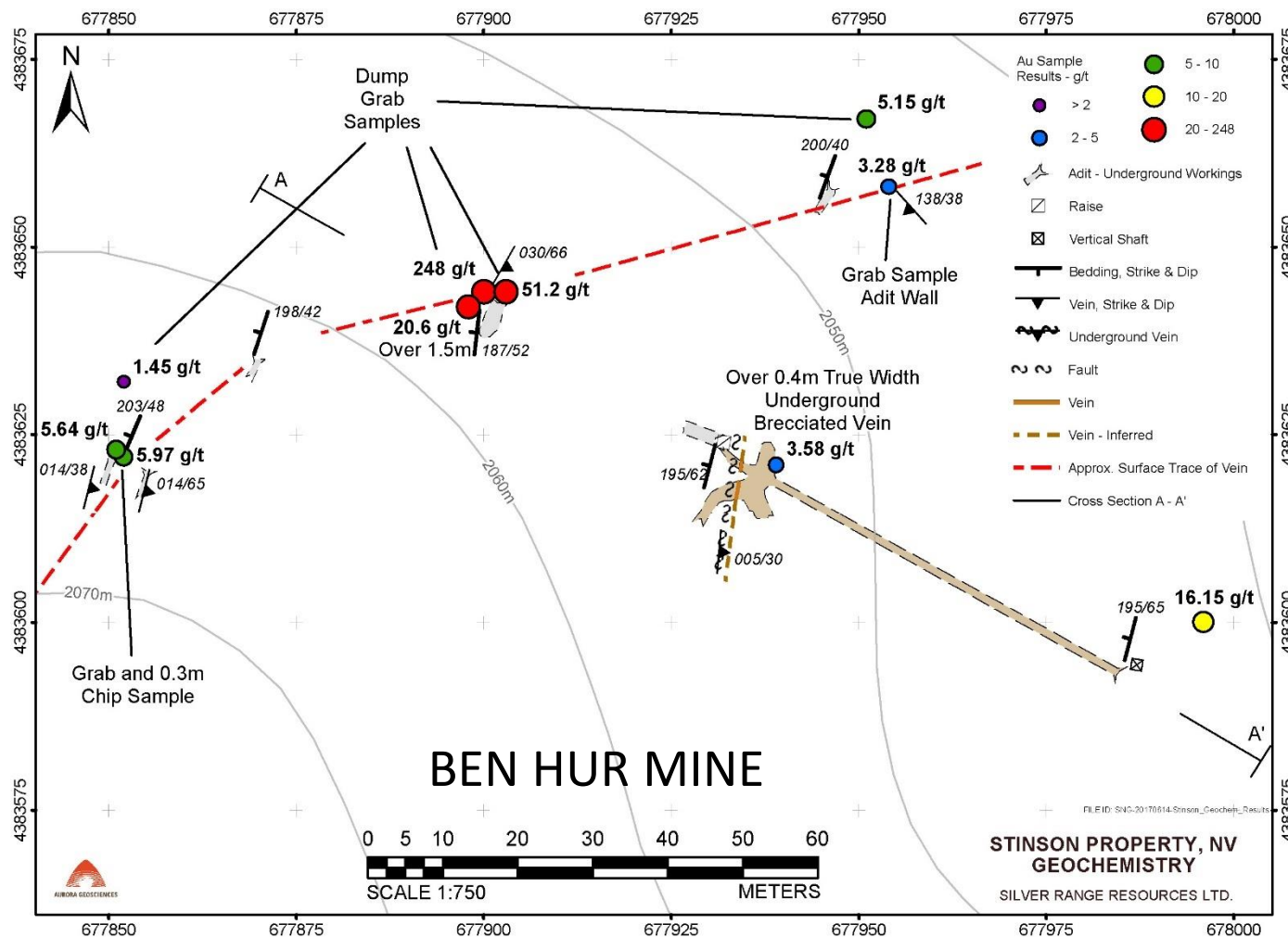


- Limestone & shale hosted
- Structurally controlled gold
 - Bedding-parallel shears
 - 3 veins reported
- Quartz, limonite, clay in breccia and veins
- 2 shafts / 300 foot lower drift
- Grabs samples to **6.94 g/t Au**
- Best chip:
3.8 m @ 2.57 g/t Au.

BEN HUR MINE



- Quartzite hosted
- Discordant, east-dipping shear
- Quartz-hematite-limonite vein & breccia material within
- Surface grab samples to **248 g/t Au**
- Chip samples:
1.5 m @ **20.6 g/t Au** (surface)
0.4 m @ 3.58 g/t Au (u/g)
(partial)
- Surface & underground small scale mining





- Claims cover the Cambridge Mine and parallel Price Lode Trend
- Triassic-Jurassic granite – Walker Lane
- Cover rocks- Miocene andesite in thrust fault contact
- Gold hosted in NNW striking shears

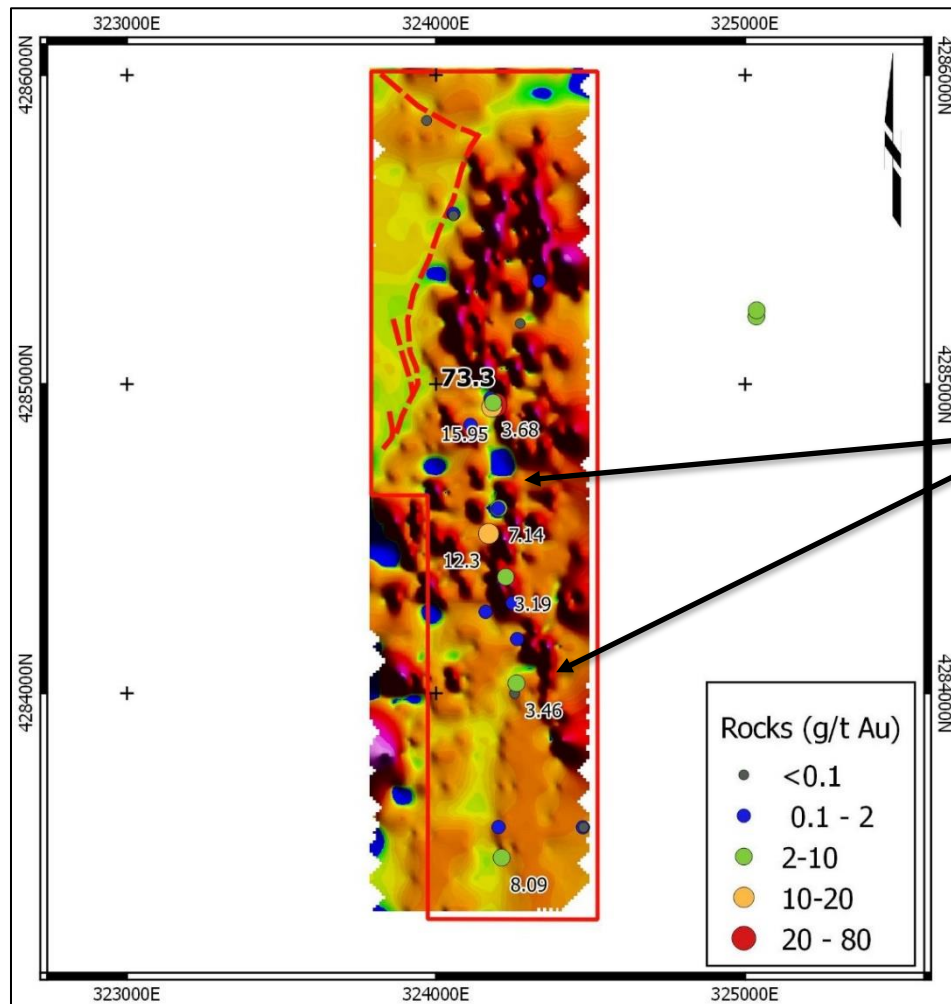


Samples collected from Cambridge Mine by JV partner Auburn Gold Mining LLC

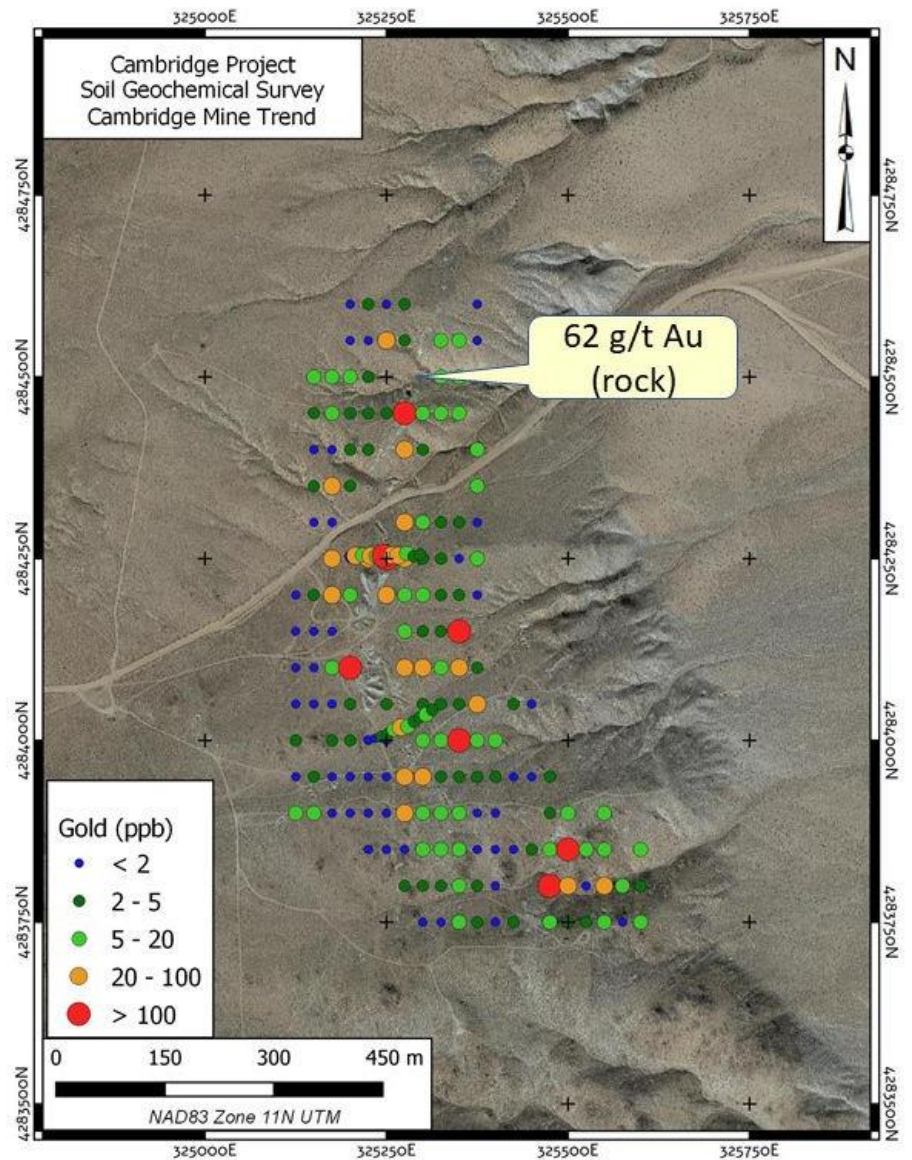
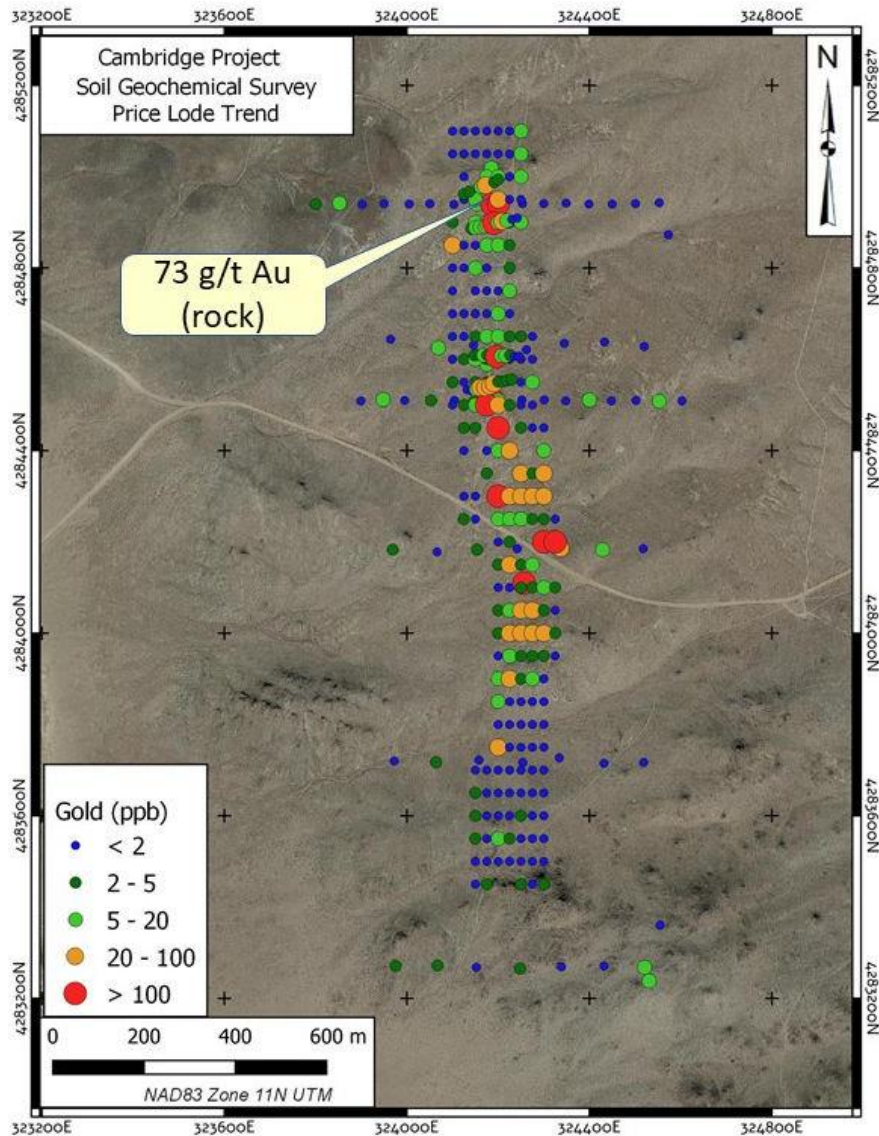


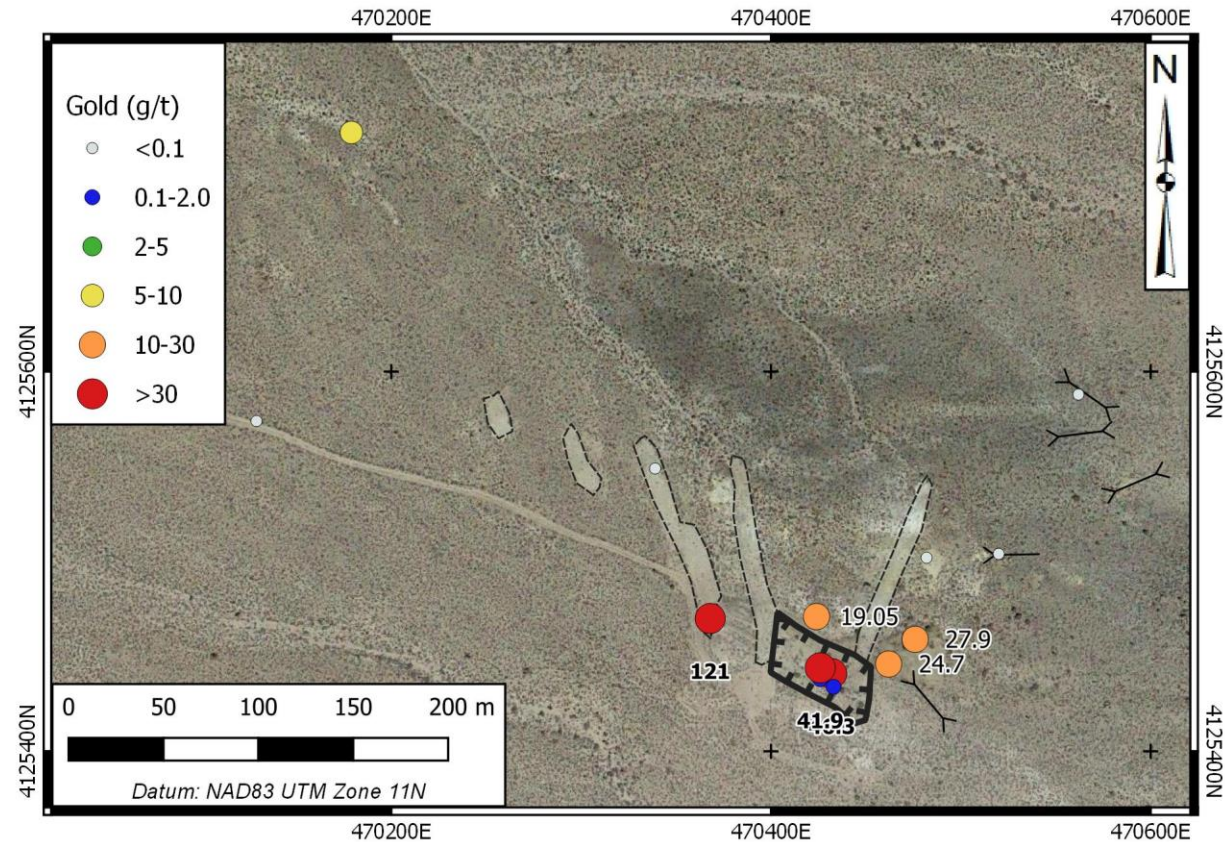
- High grade surface sample results include **80 g/t Au** and **73 g/t Au**
- 68 samples collected
 - 20 returned > 5.0 g/t Au
- Ag, Sb association





- Conductors along contact with overlying volcanics
- Gold mineralization associated with resistivity low (very weak conductor) in granite
- Magnetic breaks parallel gold mineralization

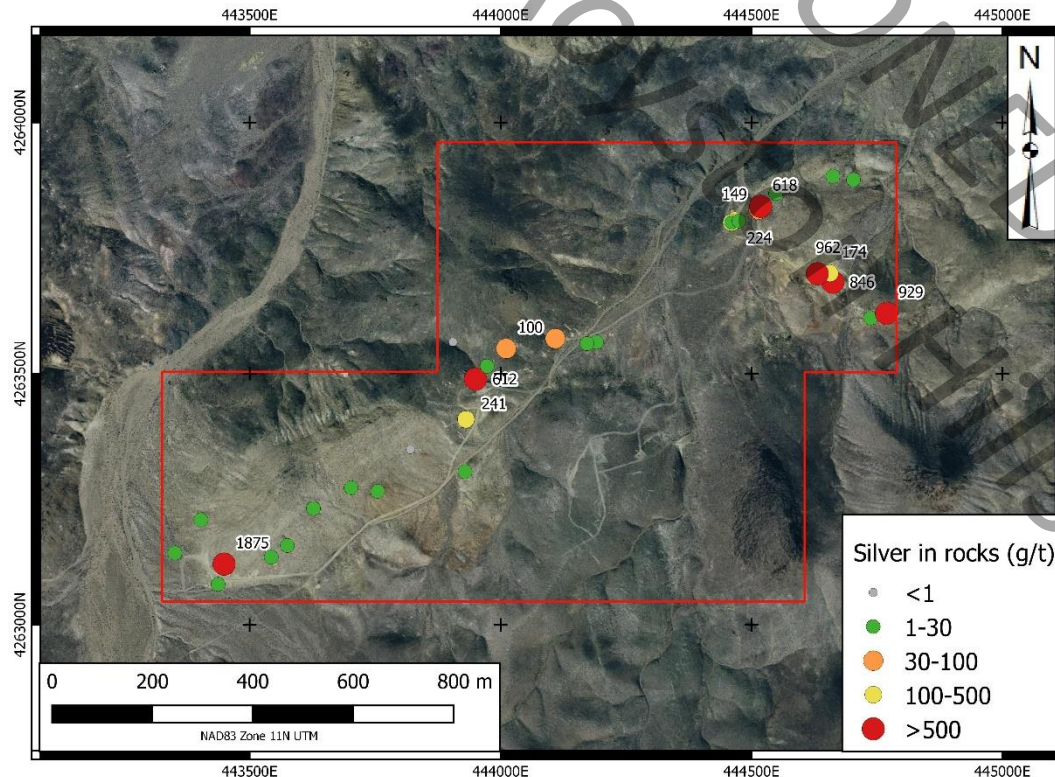


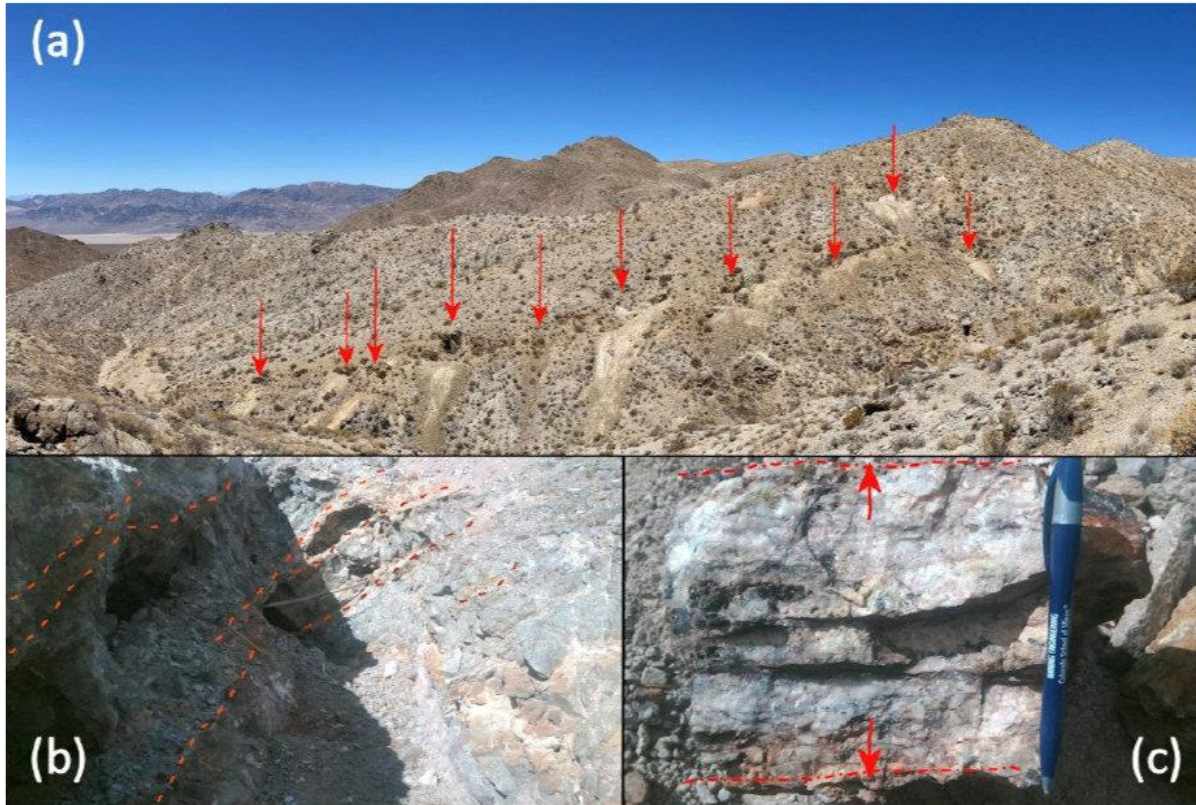


- Southwest Nevada, near Gold Point
- Intrusion-related mesothermal mineralization near roof-pendant contact
- High grade gold & silver in grab samples – to **121 g/t Au** and **1,375 g/t Ag**



- Structurally controlled, low sulphidation epithermal system
- Silver to 1875 g/t Ag
- Gold to 3 g/t Au
- Past production in the area (Republic Mining District) / Royston Hills
- Limited modern exploration



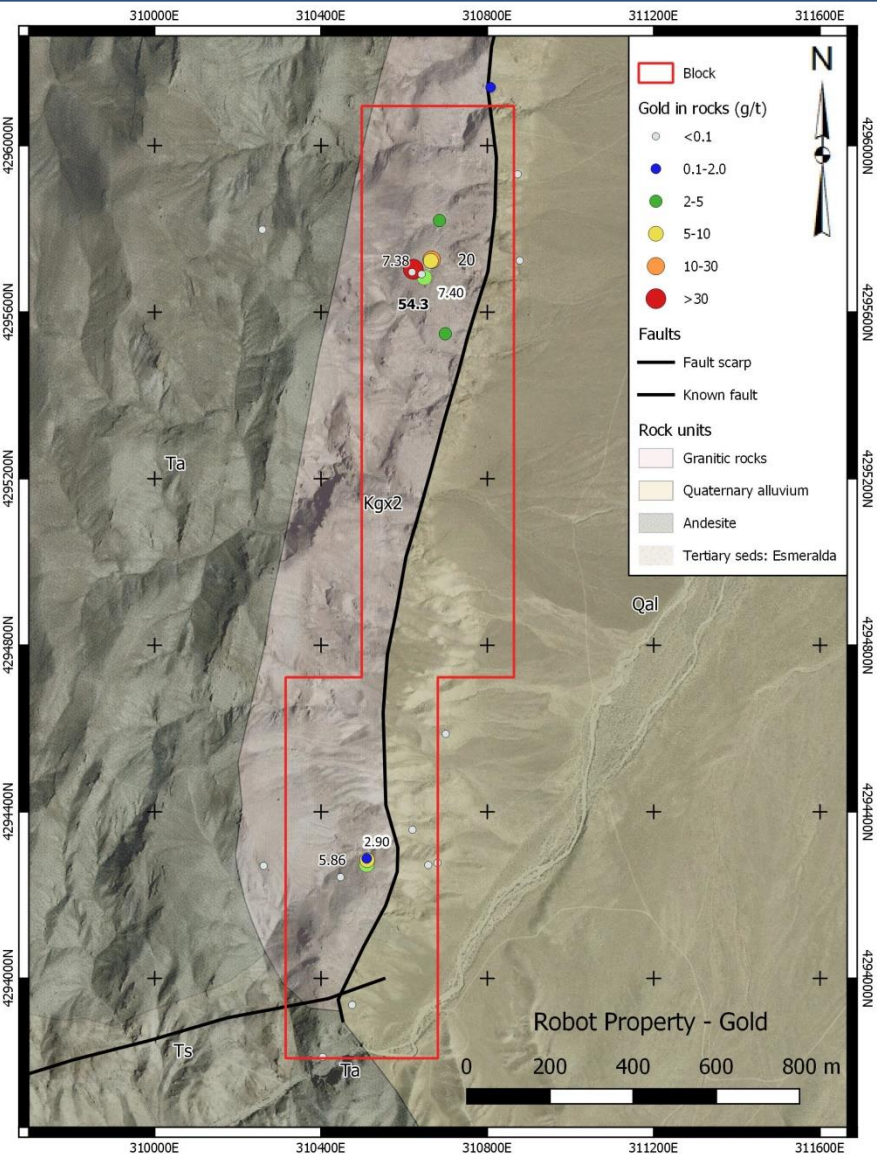


- The claims cover six Mineral Resources Data System (MRDS) showings.
- Property is underlain by Sylvania Pluton granodiorite cut by inferred mesothermal or deep epithermal oxidized quartz veins.
- Silver to 3,270 g/t from grab sampling.

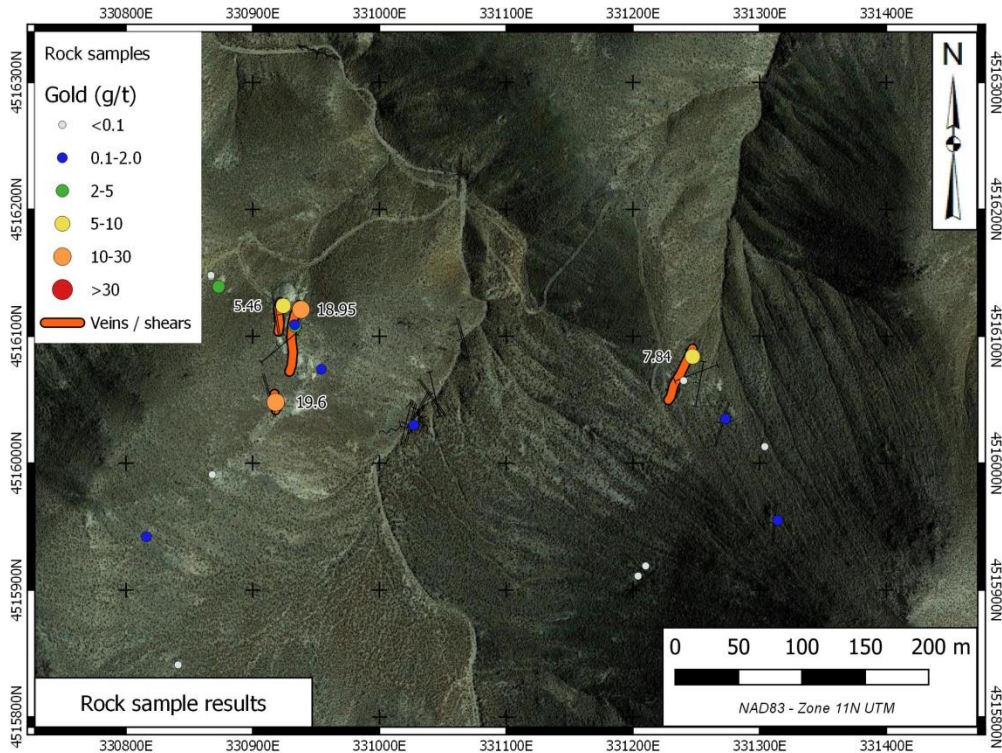
(a) Gulch showing historic workings indicated by arrows. (b) Stacked, planar veins in a working at the Old Cabin showing, indicated by orange lines. (c) Extensional vein detail – Old Cabin Showing. Mineralized quartz grades > 100 g/t Ag.



- Intrusive hosted Au-Cu target
- Vein / fault controlled
- Surface samples to **35.1 g/t Au & 19.1% Cu.**
- Historical shallow workings; no evidence of drilling.
- Overlooked showing: No MRDS.
- Road accessible – Central NV.



- Multiple gold occurrences along a mile-long trend in the footwall of a prominent north-striking range front fault.
- Gold hosted in veins and shears.
- Initial grab samples of **54.3 g/t gold** and **20.0 g/t gold** from separate veins **50 m** apart.
- 5.86 g/t gold grab from South Zone



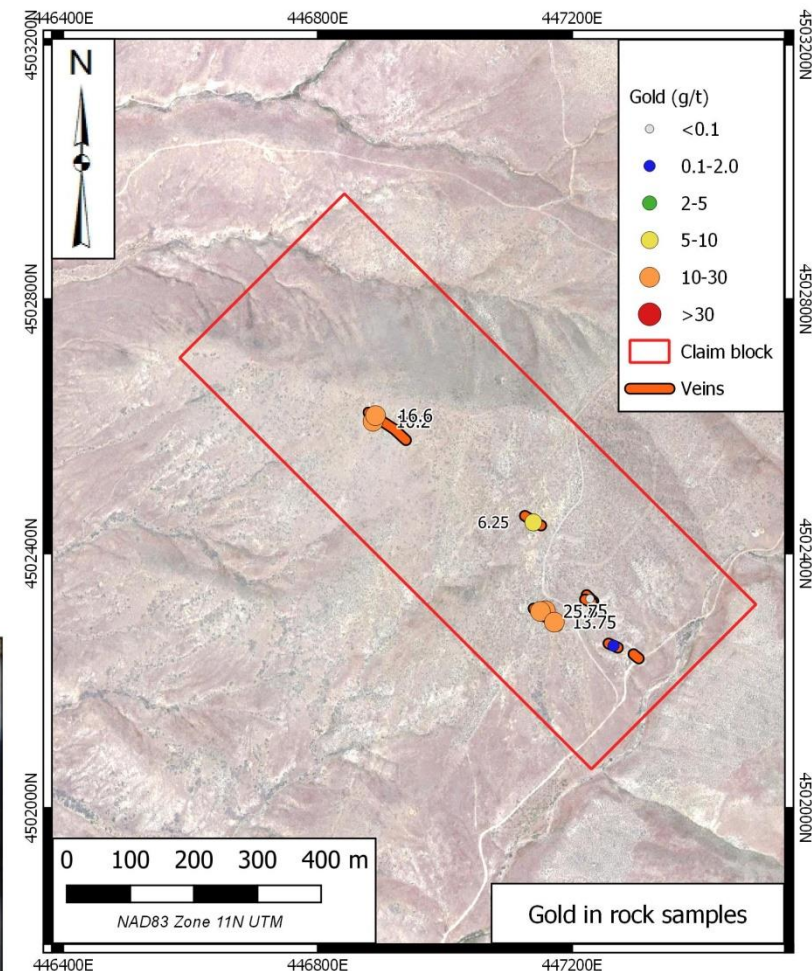
- Vein array with veins exposed up to 60 m long and > 1 m wide.
- Past small-scale production.
- Initial grab sample of **18.9 g/t gold** and chip sample of **19.6 g/t gold** over 0.5 m.
- Road accessible in Pershing County



- Low sulphidation epithermal mineralization.
- Network of veins 540 m long, up to 60 m wide.
- Initial chip sample returned **25.7 g/t gold over 1.83 m**
- Initial grabs to **16.6 g/t gold**



Loner mineralization (a) 0.3m @ 13.85 g/t Au from weathered vein (b) vein swarm in granite (c) sulphide mineralization at NW end of the property (10.2 g/t Au).





- Northern Humboldt County
- Widespread intrusion related veins and skarn mineralization
- Recent grab sample assays up to **15.95 g/t Au** with **181 g/t Ag** and 1.1% Cu

- ★ Project Under Option
- ★ Royalty Interest

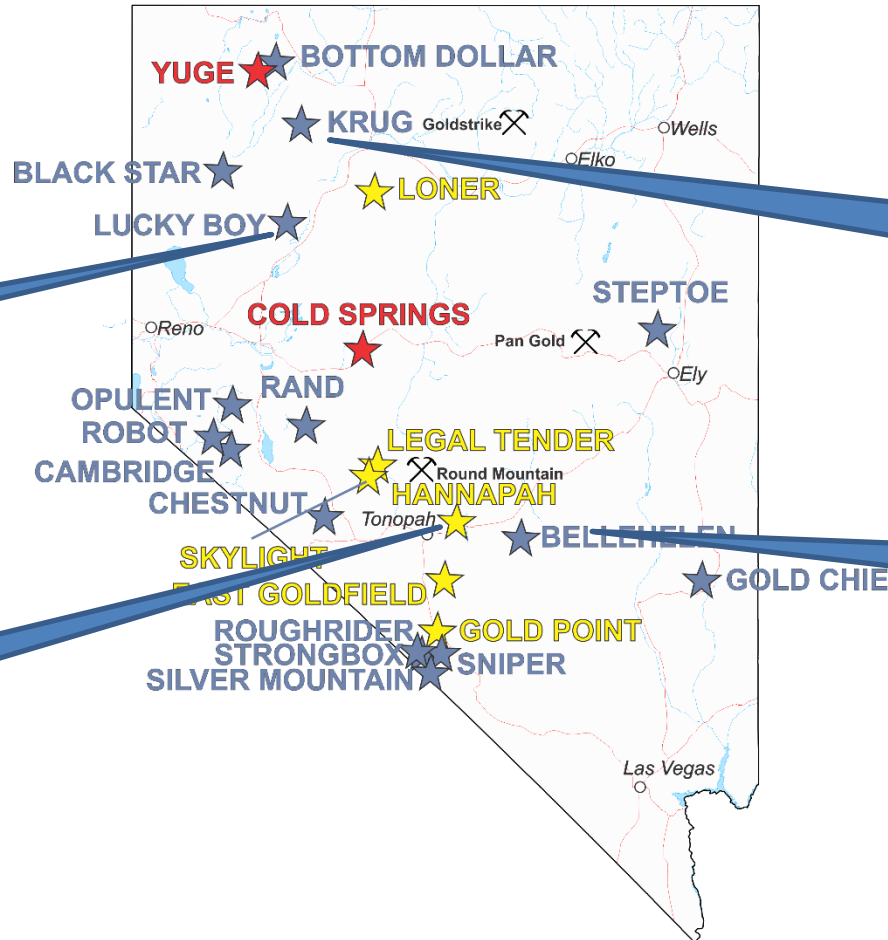
LUCKY BOY

- Low sulphidation epithermal silver
- Recent sampling returned up to **1535 g/t Ag**



HANNAPAH

- Low sulphidation epithermal gold & silver.
- Recent sampling- up to **568 g/t Ag**



KRUG

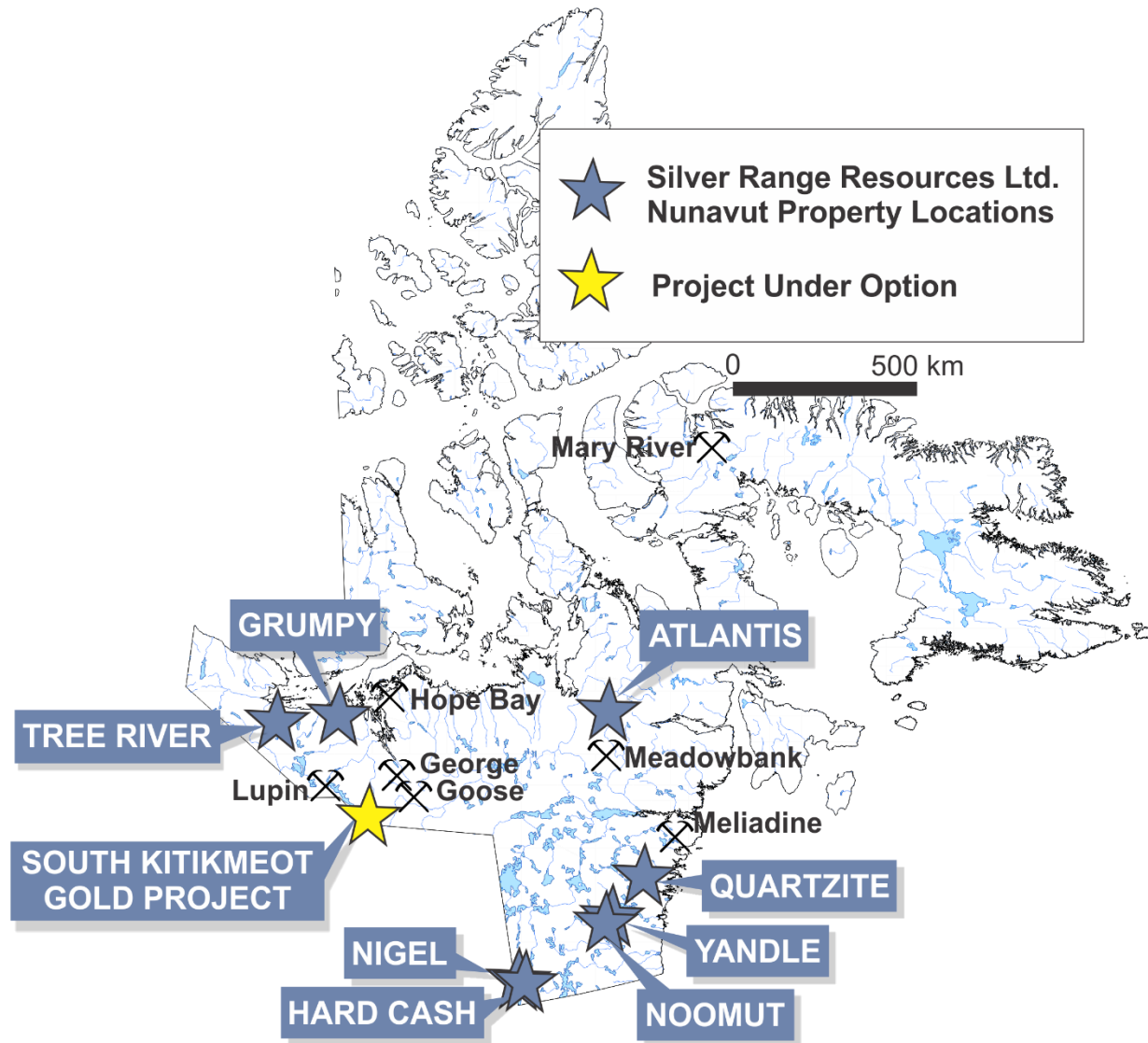
- Mesothermal gold in quartz veins & breccias

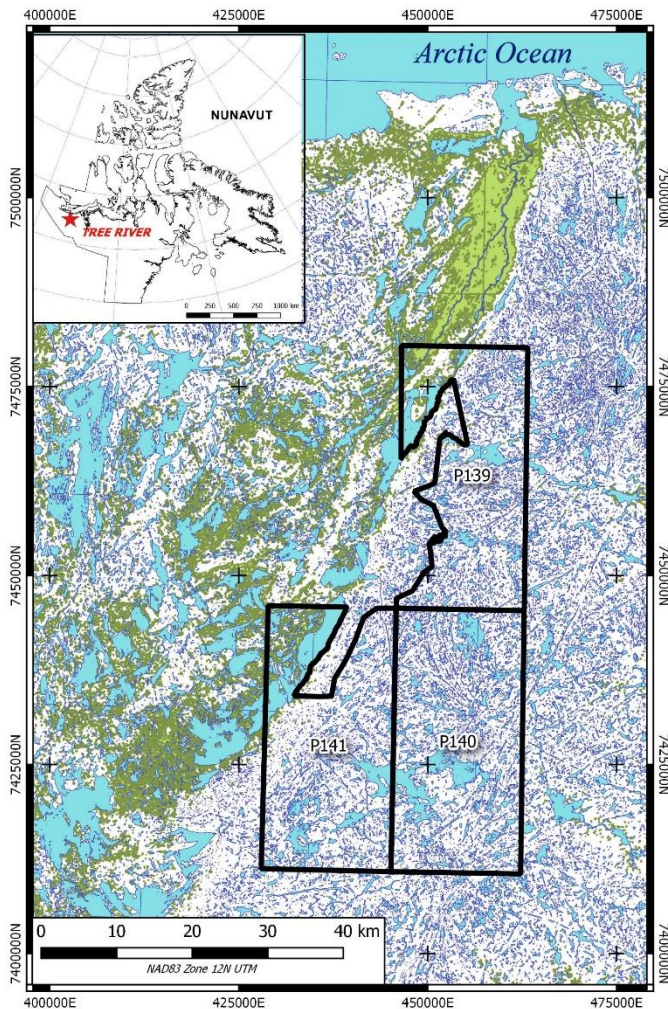


BELLEHELEN

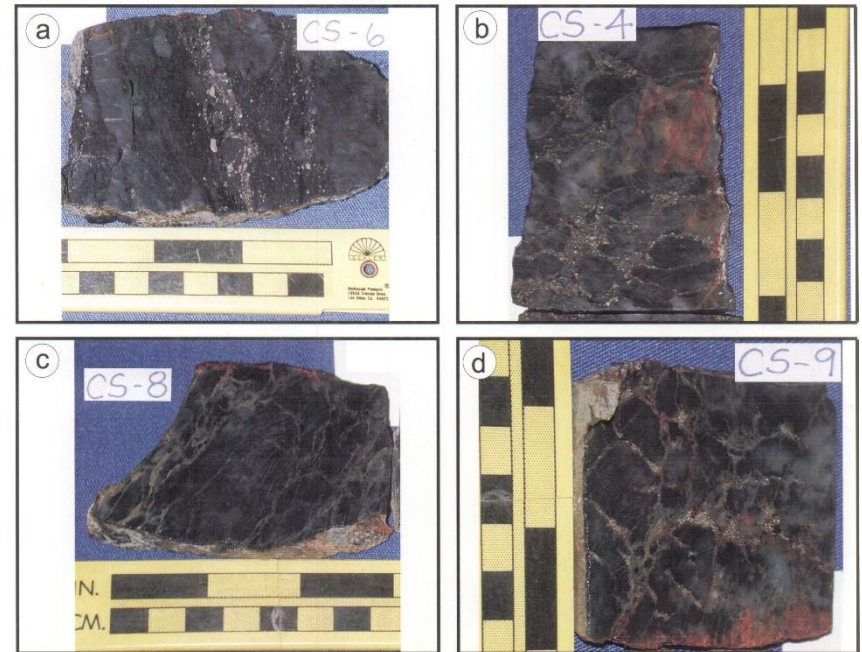
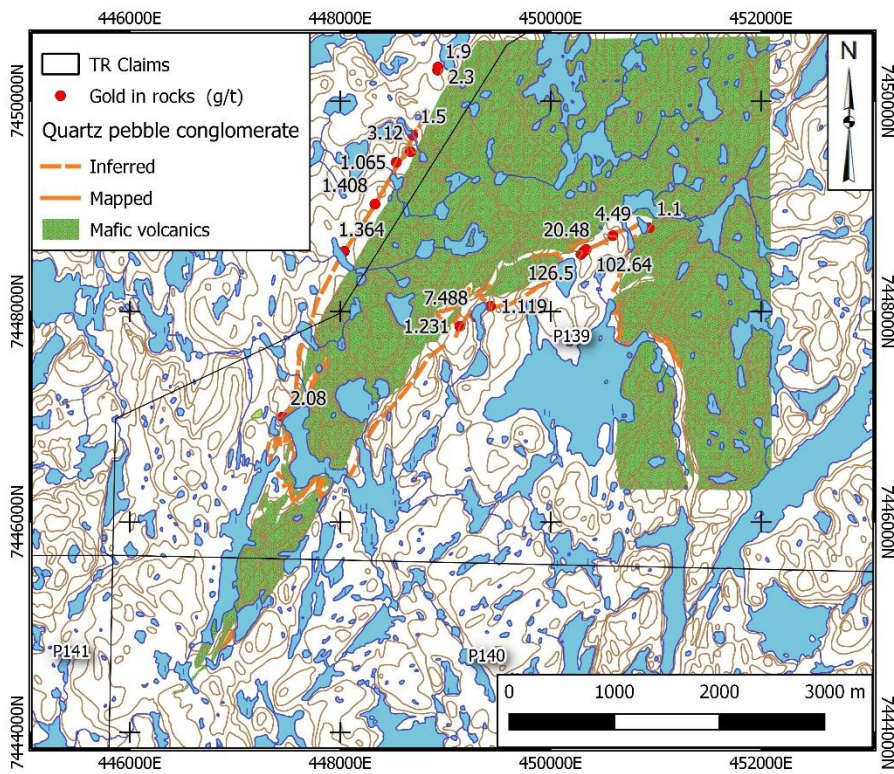
- High grade silver centred on the Ajax Mine





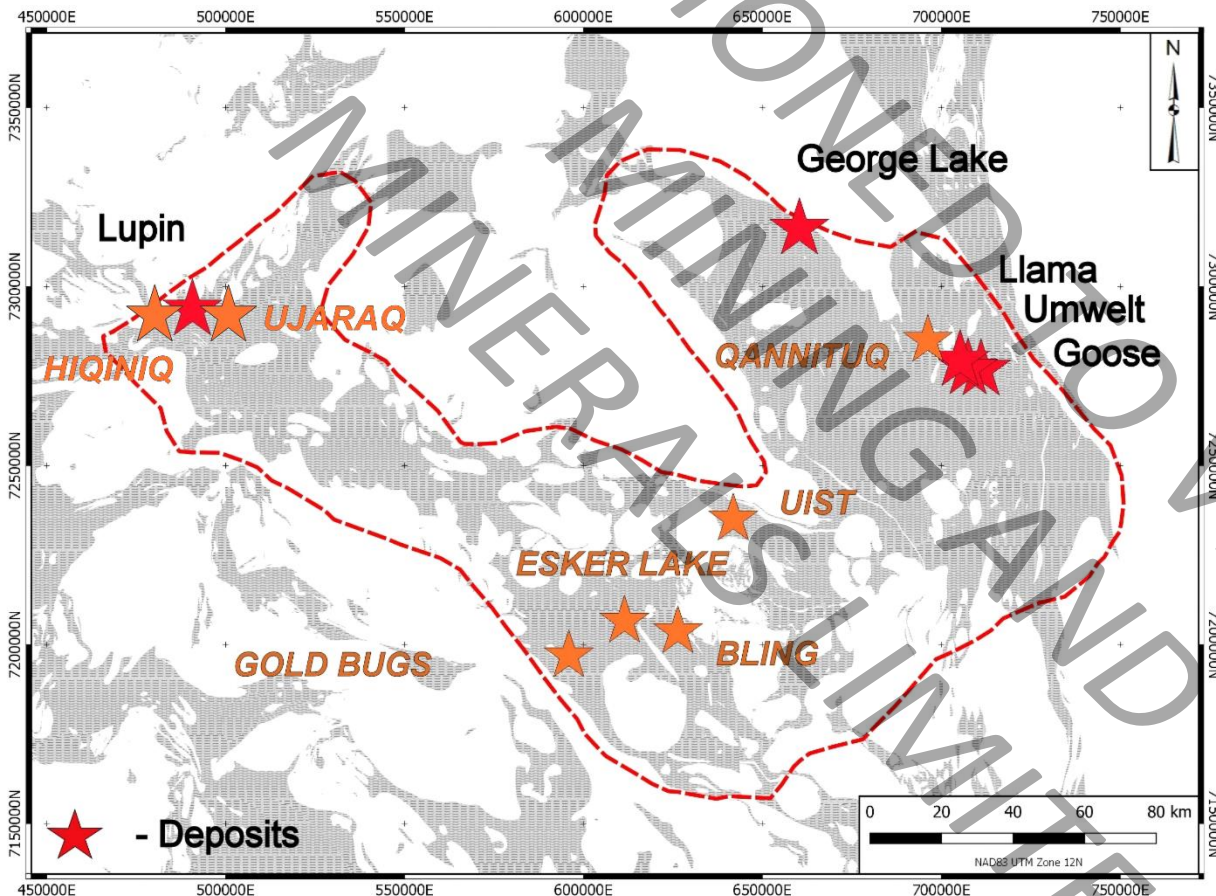


- Property covers 39,250 hectares, 155 km SE of Kugluktuk (Coppermine)
- Host is a regionally extensive, 15 to 20 m thick, Archean quartz-pebble conglomerate (QPC)
- A Pilbara / Wits 2.0 look-alike:
 - ✓ 2.94 to 2.70 Ga – in the “Great Gold Deposition Event” time window
 - ✓ Carbonaceous layers present to 5% of rock
 - ✓ Detrital sulphides throughout matrix (pyr ± aspy ± stib), locally massive
 - ✓ Background gold +100 ppb Au
 - ✓ Local high grade gold grabs: **142 g/t Au**, & channel sampling: **0.35 m @ 63.15 g/t Au**
- Prospected / channel sampled / never drilled
- 2018 grabs up to **114 g/t Au** and chips samples including **540 g/t Au over 0.2 m**

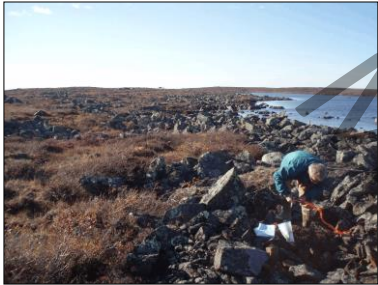


QPC polished specimens (C. Muntener, 2006)

Canada's Next High Grade Gold District

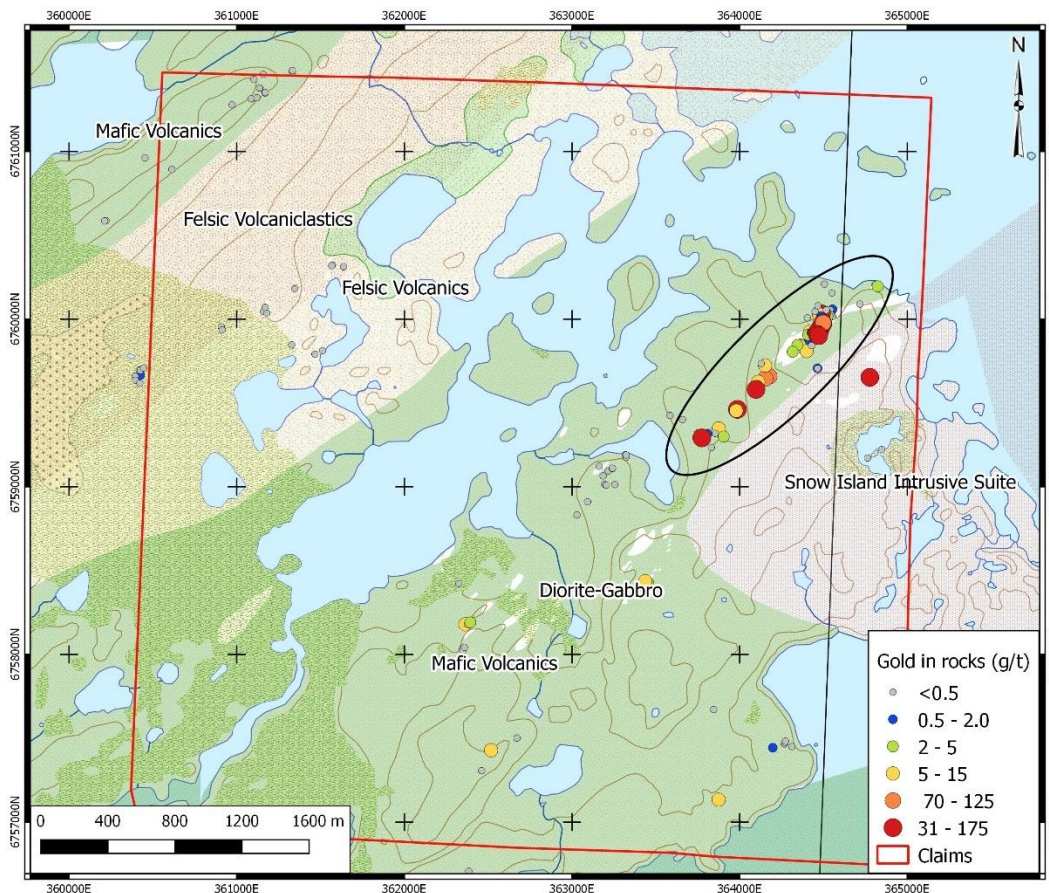


- 7 properties
- Similar in style to Sabina's George & Goose Lake projects: iron-formation hosted gold in the favourable Beechey Lake host metasediments.

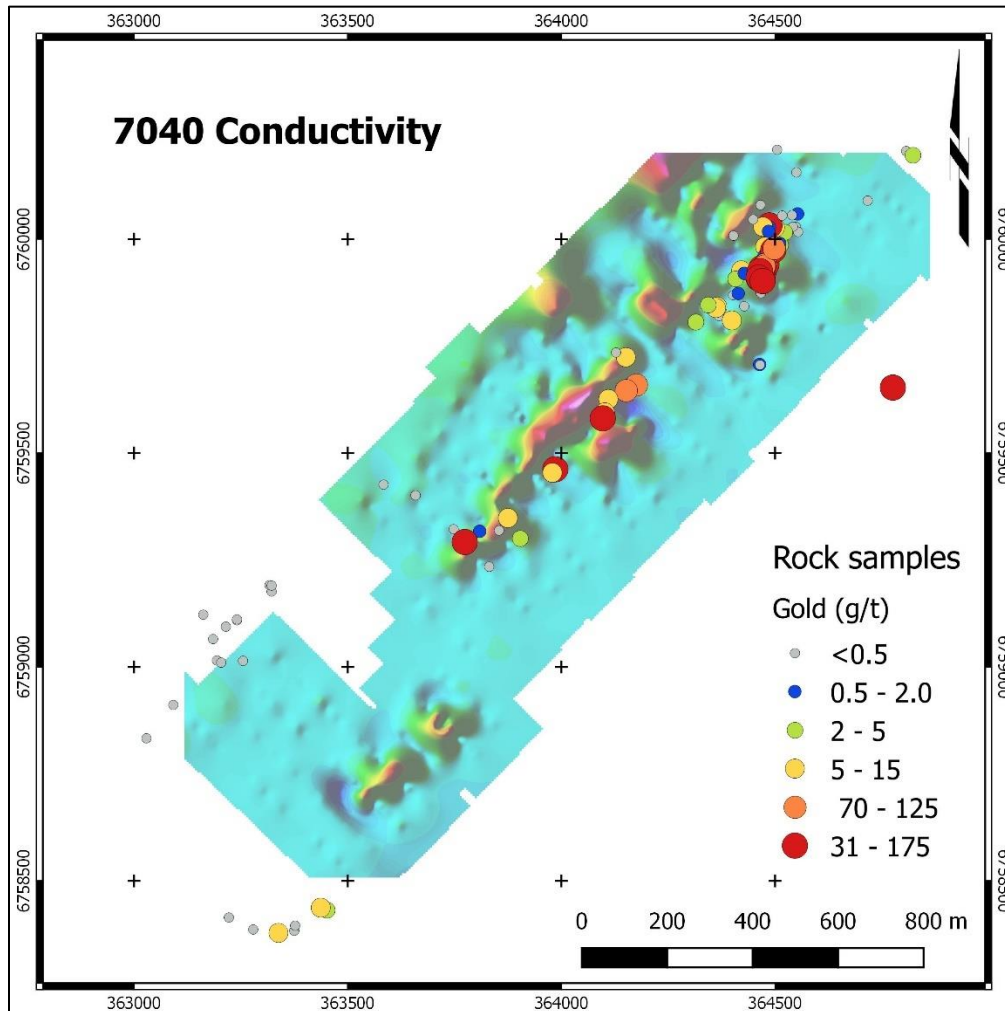


- **ESKER LAKE**
 - 3.5 km strike
 - Drilling: **3 m @ 11 g/t Au** / grabs to **26 g/t Au**
- **UIST**
 - 2 km strike, adjoins Sabina's claims
 - Grabs to **64 g/t Au**
- **GOLD BUGS**
 - 7 km strike / multiple zones
 - Grabs to **35 g/t Au**
- **BLING**
 - 700 m strike
 - Trenching: **2 m @ 16 g/t Au** / grabs to **47 g/t Au**
- **QANNITUQ** (next to Llama)
 - Recce maps favourable stratigraphy, anomalous gold in iron formation
- **Ujaraq** (next to and East of Lupin Mine)
 - Surface samples to **28.11 g/t Au**
 - Drilling: **6.27 m @ 2.13 g/t Au**
- **Hiqiniq** (next to and West of Lupin Mine)
 - Surface samples to **11.16 g/t Au**

High Grade Archean Lode Gold



- 1.4 km train of float & bedrock gold to **174 g/t Au**
- 25 of 63 samples > **5 g/t Au**
- Archean lode-gold style mineralization (eg. Timmins, Kalgoorlie, Red Lake)
- Drill targets defined by associated geophysical anomalies



- Laminated quartz-sericite-carbonate veins in a +100 m wide poly-phase shear zone.
- Pyrite – galena – sphalerite – tellurides
- High grade system: best grab samples to **174 g/t Au** & **1,190 g/t Ag**



Veins at the Pond Showing
(+ 11 g/t Au)

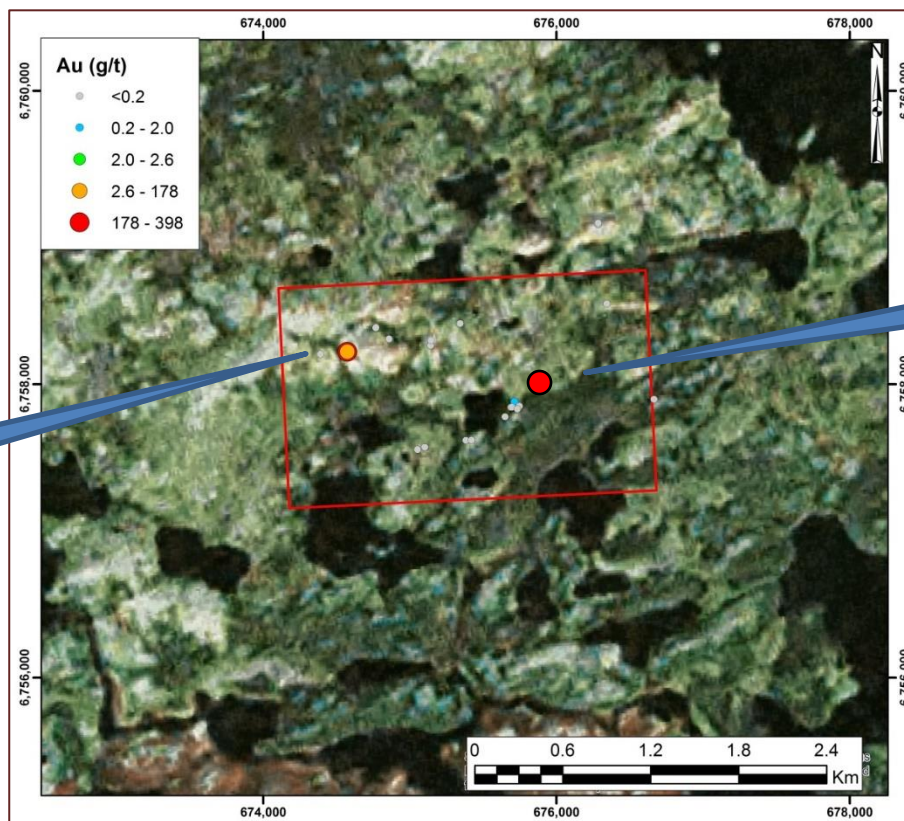


Veins at the Swamp Showing
(+ 30 g/t Au)

Archean Lode Gold Showings Under Option to Canarc Resources Corp. 15 km West of Hard Cash

Clyde Showing

- Quartz-carbonate-galena-pyrite veins
- Historical grabs to **45 g/t Au.**



Bob Showing

- Quartz-carbonate-galena-pyrite veins
- Small outcrop in overburden covered area.
- Historical grabs to 465 g/t Au; recent sampling **398 g/t Au.**



REGIONAL SCALE GOLD TARGET ALONG A RHEOLOGICAL BREAK

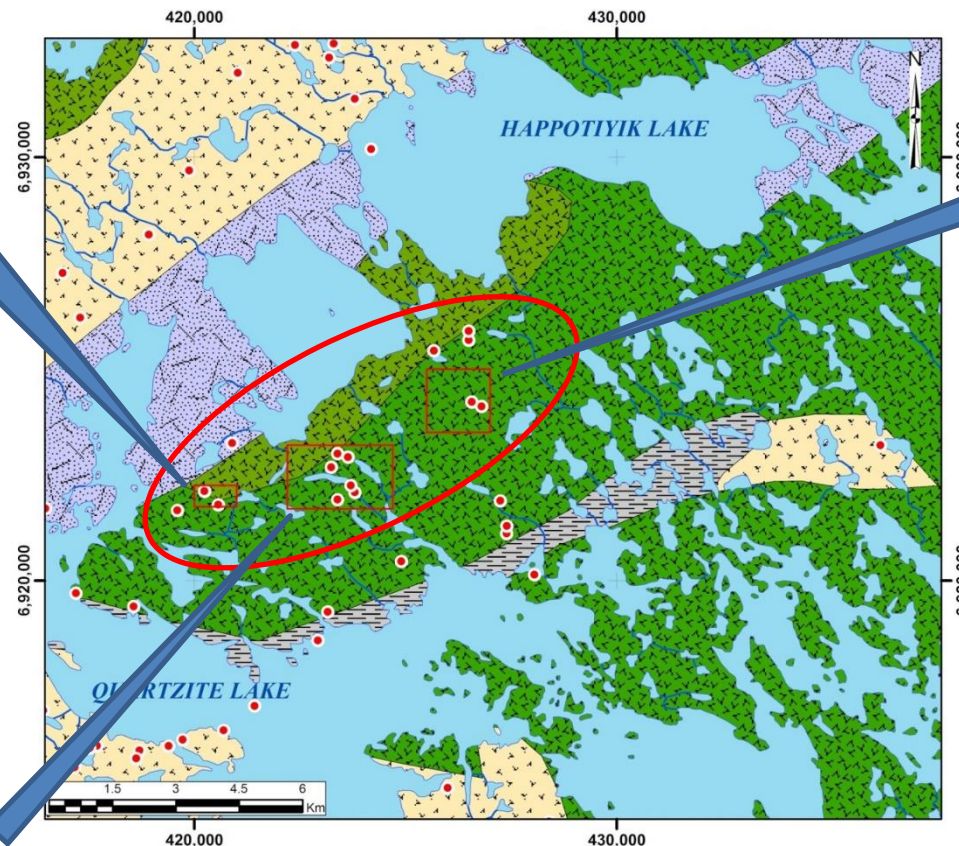
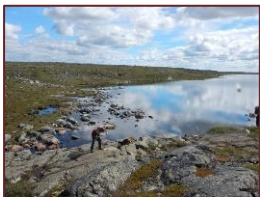
West Zone

- Quartz-carbonate-pyrite-galena veins
- Grab samples to **27 g/t Au**



Eva Lake

- Cpy-py-qtz veins in carbonate altered volcanic float
- Historical grabs: **8.1 to 132 g/t Au.**



Joan Lake Zone

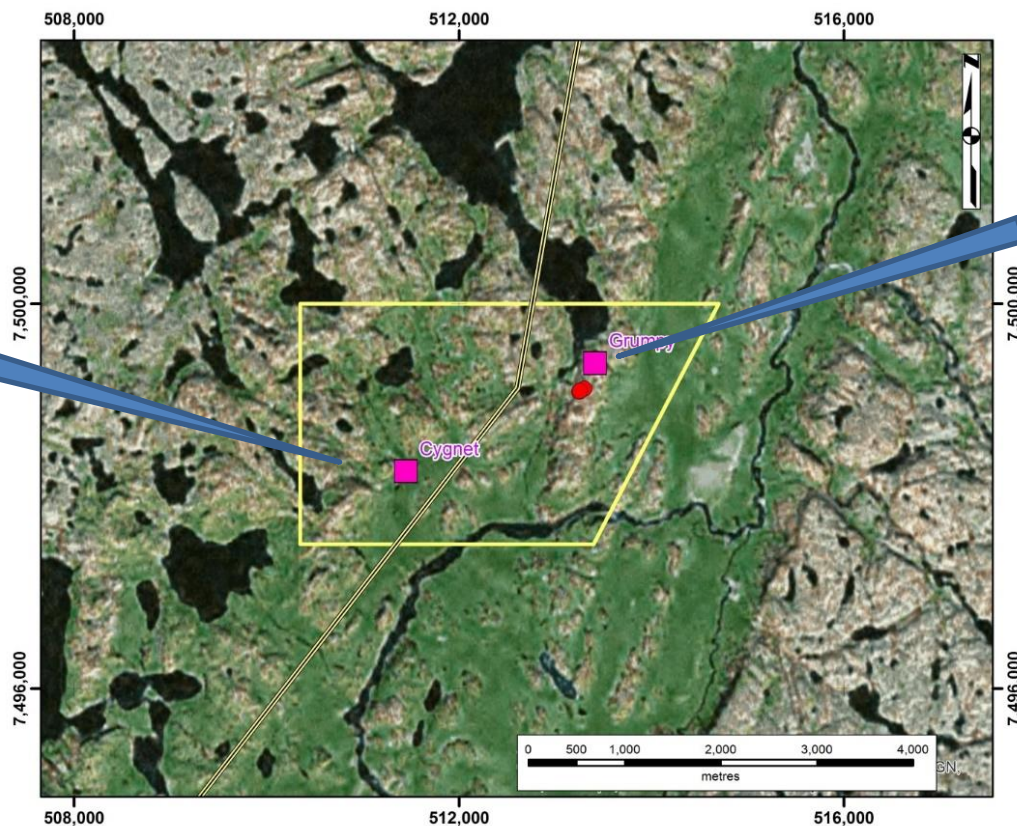
- Carbonate altered metavolcanics with pyrite-quartz veins
- Historical grabs to **17.8 g/t Au.**



ARCHEAN LODE GOLD TARGETS ASTRIDE THE PROPOSED GRAYS BAY ROAD

Cygnets

- Veins 25 m x 0.3 m
- Historical sampling:
32 g/t Au grab
0.3 m @ 16.9 g/t Au chip

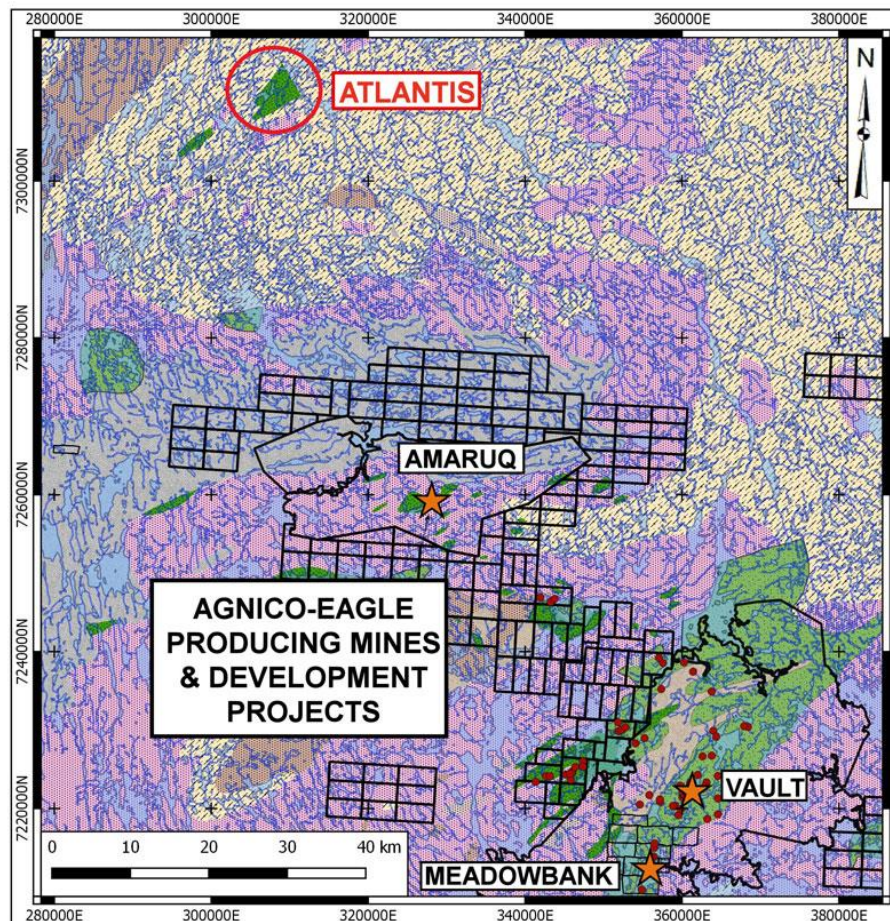


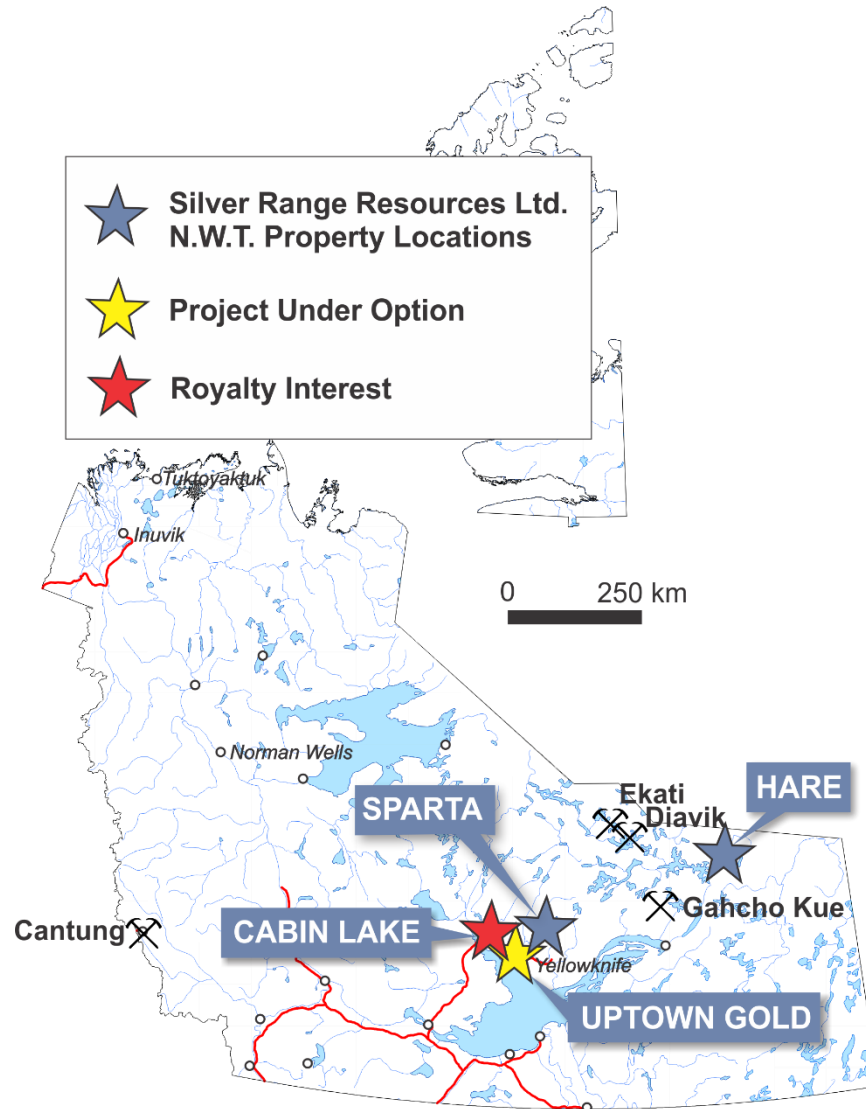
GRUMPY

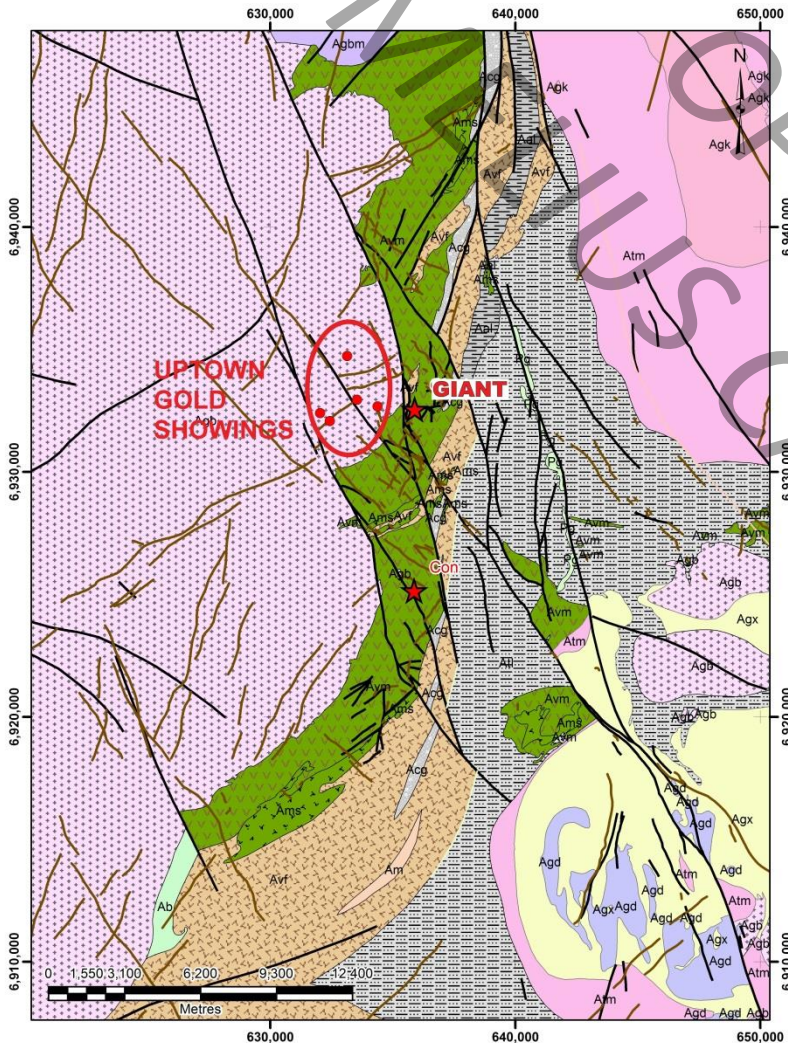
- 105 x 1.4 m vein
- Historical sampling:
1.6 m @ 12.7 g/t Au
2.5 m @ 8.3 g/t Au



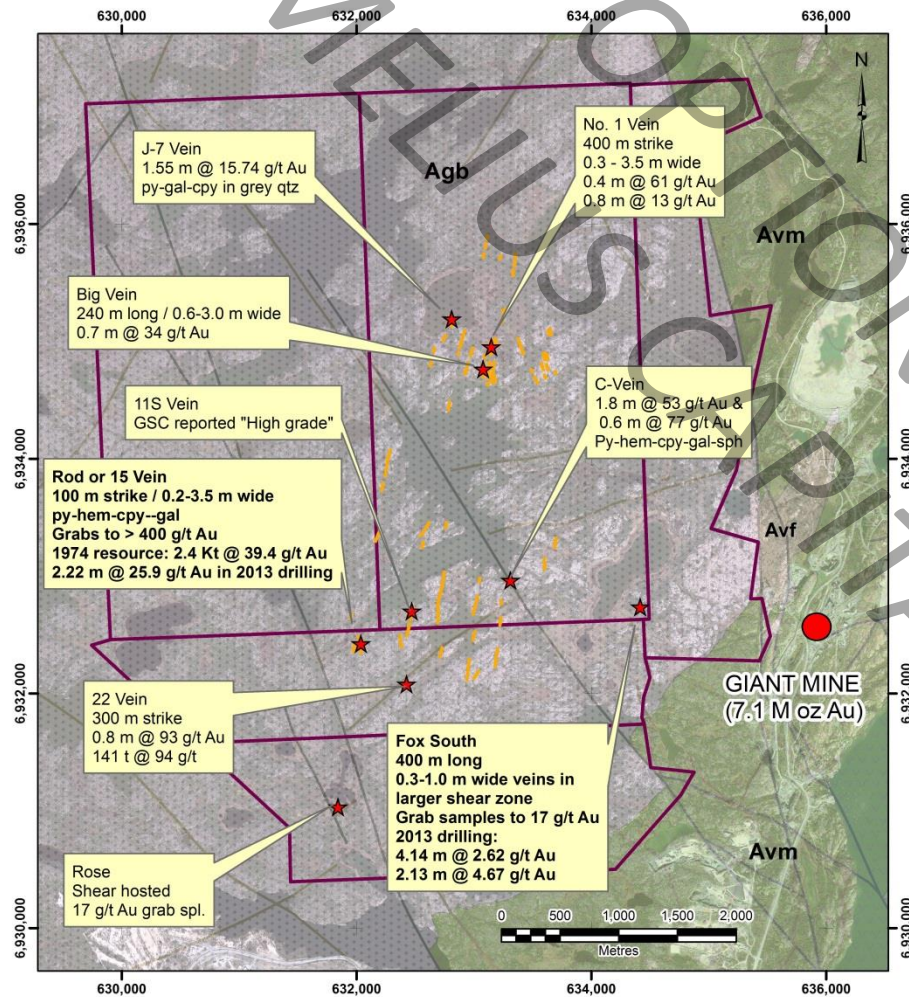
- Same package of rocks hosting gold deposits at Meadowbank, Vault & Amaruq
- Only recently mapped by the GSC (late 1990's)
- Never explored.







- Near downtown Yellowknife NT
- High grade Archean granitoid -hosted lode-gold mineralization
- 8 showings with mineralization grading from 10's to 100's g/t Au.
- Small scale gold production from two showings
- Indications of a large-scale mineralizing system.
- Adjacent to an 7.1 M oz gold deposit (16.1 Mt @ 15.5 g/t Au – past production)



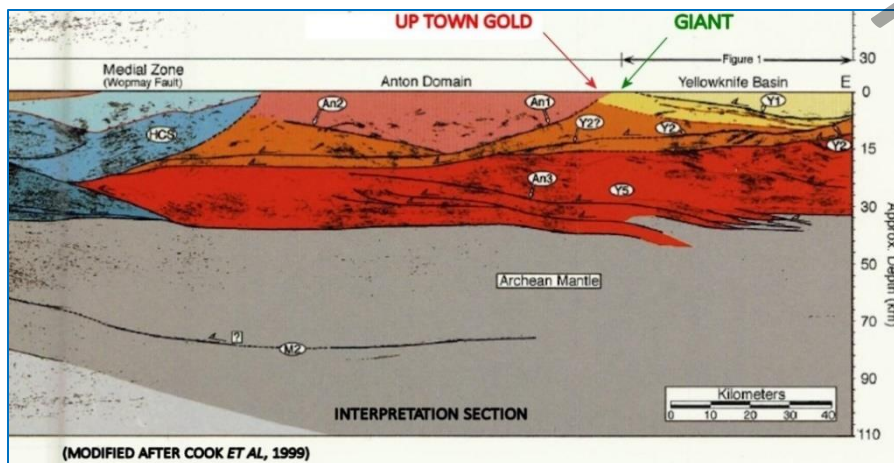
- Wide spread vein hosted mineralization.
- 8 known showings
- Shallow (<60 m) drilling at 6 showings
- Small high grading operations at two showings (Rod & 22 Vein)

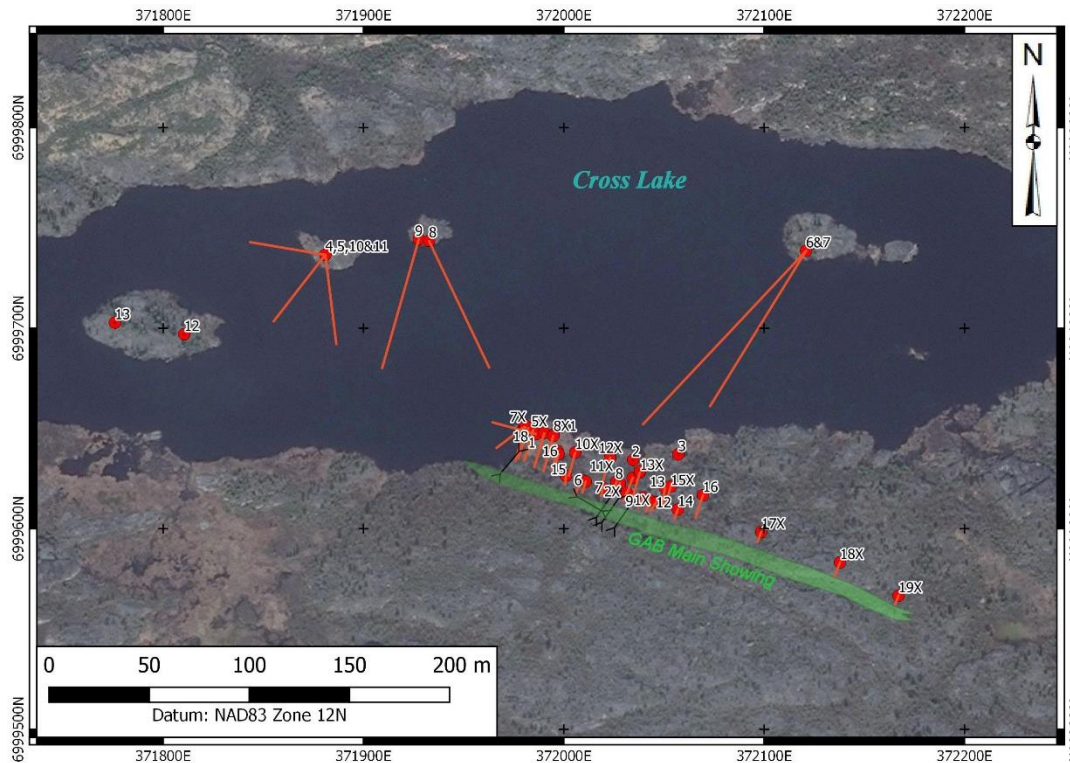


(Sampling Rod production pit – 2015)



- Intense hematite alteration near vein systems; distal chlorite.
- Sub-parallel structures host Up Town Gold mineralization and the Giant deposit.
- Structures at Giant and Up Town Gold straddle an interpreted deep crustal fault (Lithoprobe)
- Proximity to deep crustal faults / shear zones is a demonstrated control on mineralization in several Archean lode gold districts.





- Near Yellowknife & Ekati winter road.
- Turbidite-hosted Archean lode-gold mineralization.
- Historic (non 43-101) resources:
 - Gab: 30,000 T @0.31 OPT Au
 - Sparta: 3,000T @0.36 OPT Au

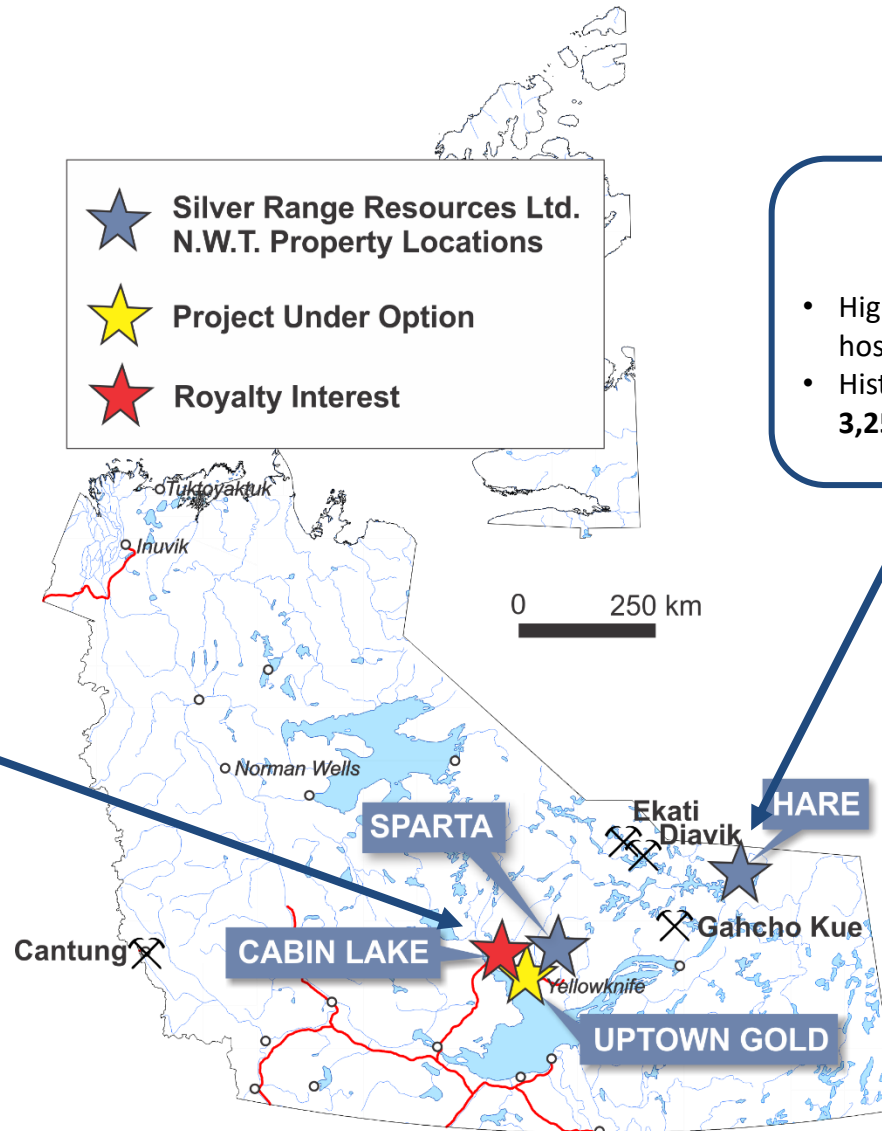
Cabin Lake Royalty 2% NSR with Advanced Royalty Payments

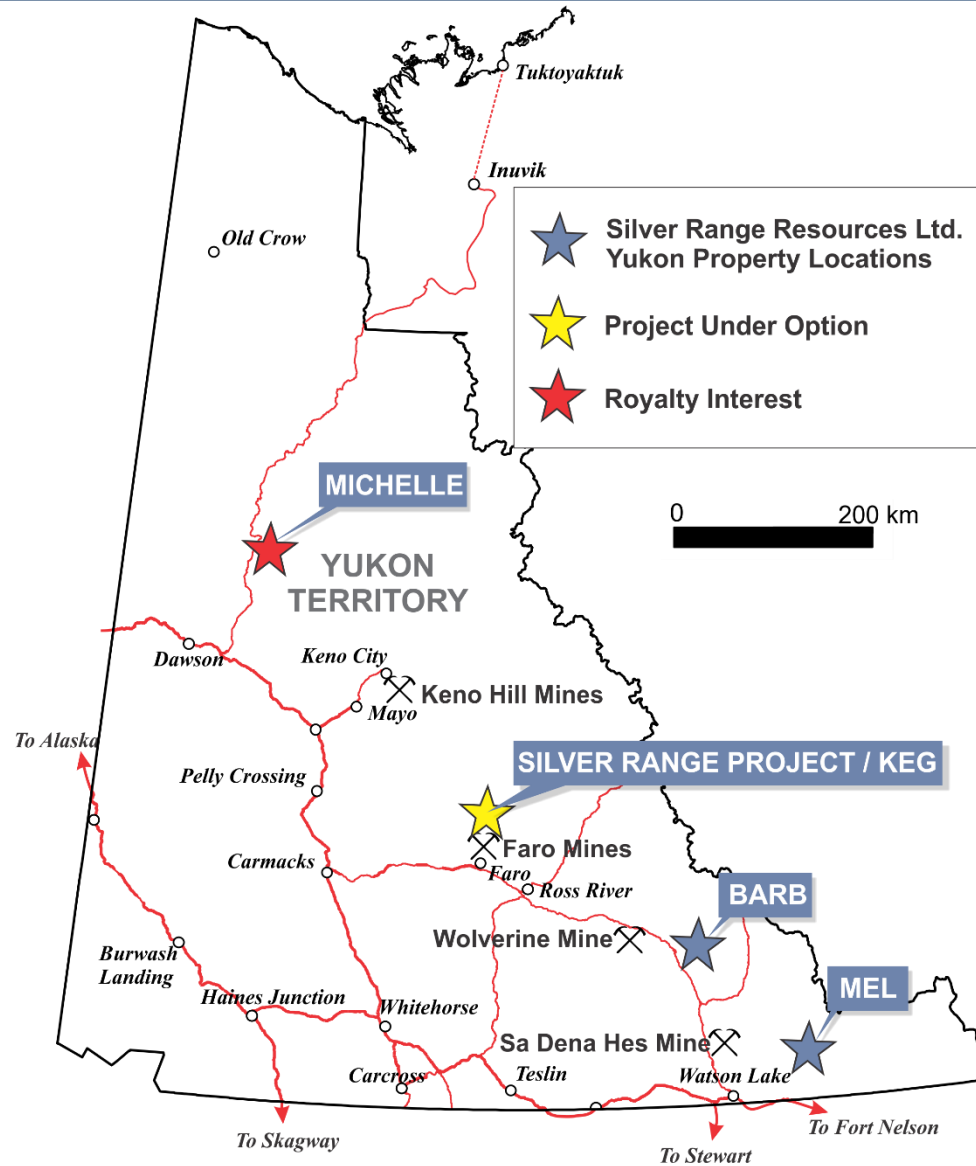
- 100 kt @ 0.3 OPT Gold (historic resource)
- Rover Metals recent drilling includes **13.6 g/t gold over 32 metres.**

- ★ Silver Range Resources Ltd. N.W.T. Property Locations
- ★ Project Under Option
- ★ Royalty Interest

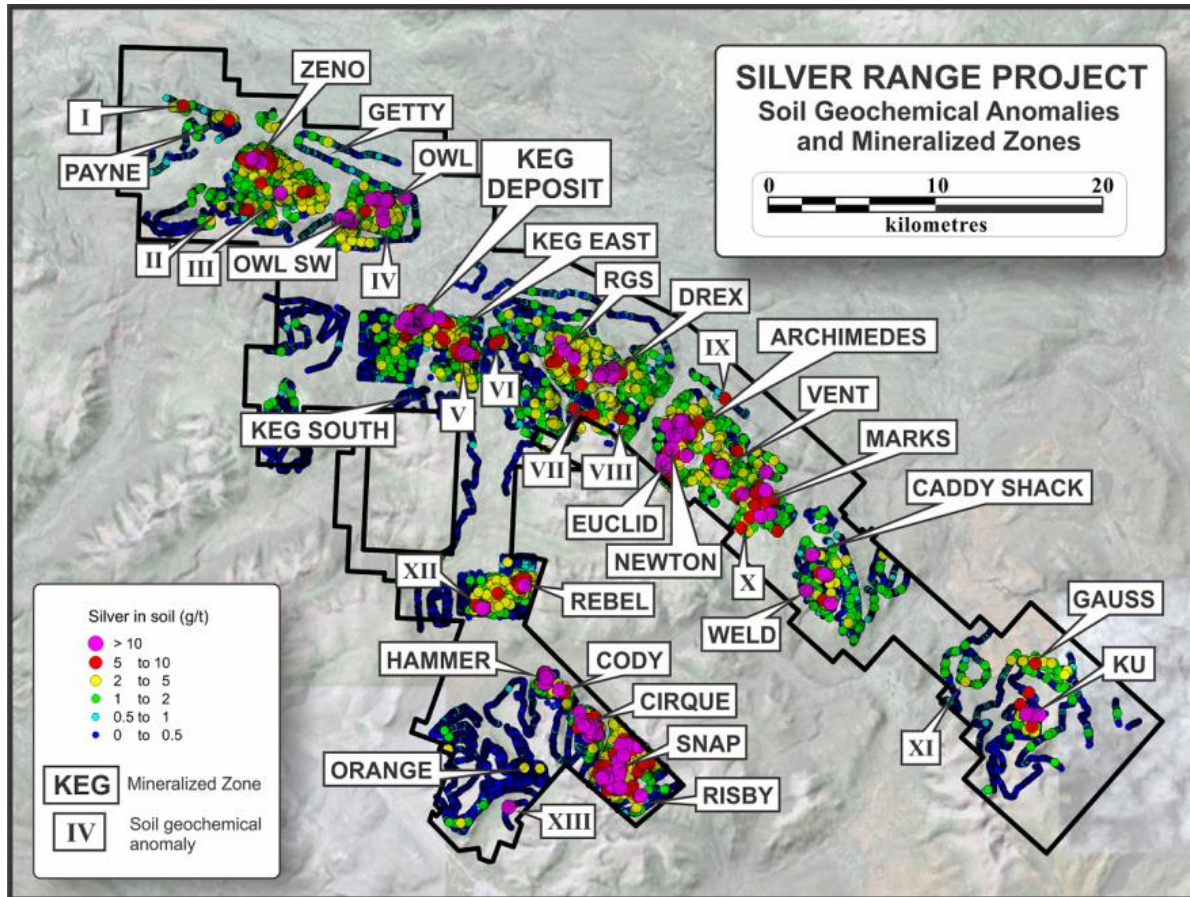
Hare

- High grade structurally hosted gold
- Historical sampling to **3,250 g/t Au**



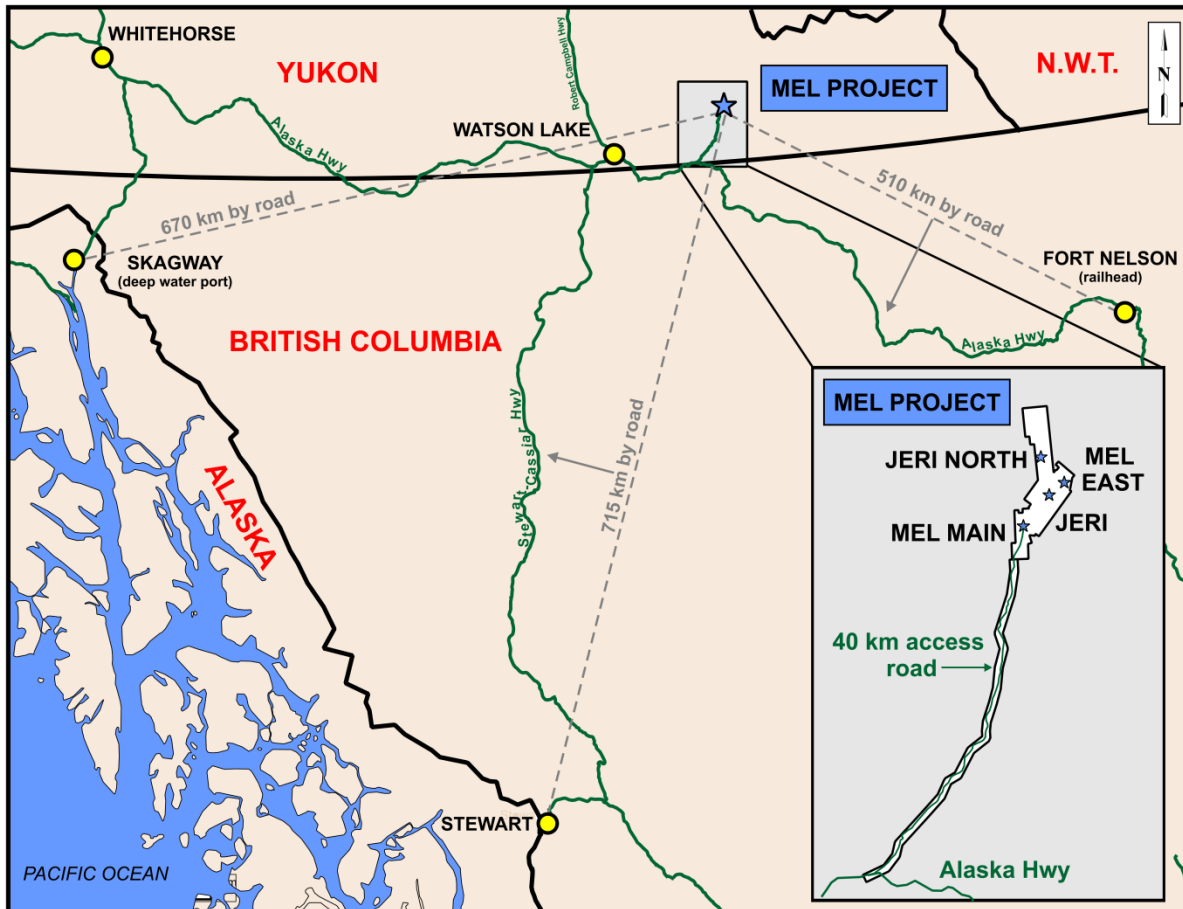


District Scale Silver Project Optioned to Broden Mining Ltd.



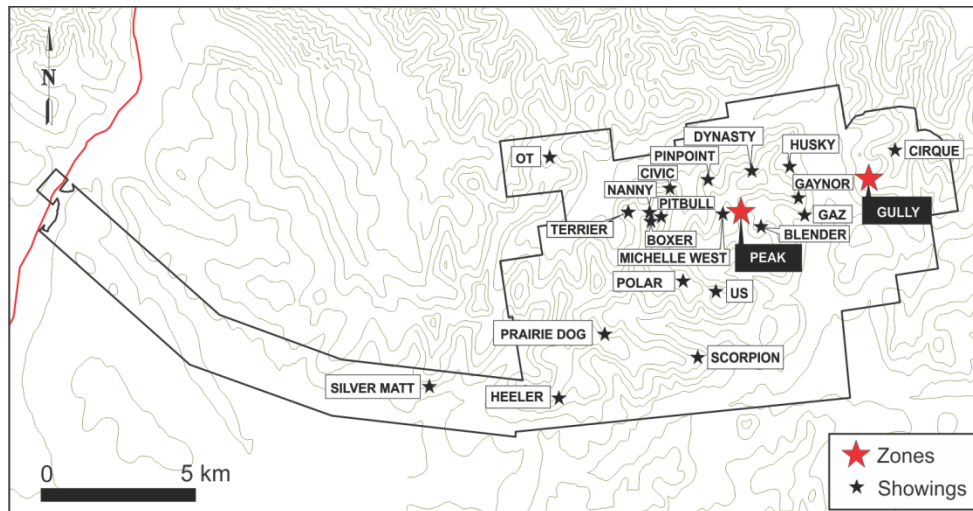
- The Silver Range project is a developing silver district centered on the 39.76 million tonne Keg deposit* see page 2
- **38.7 million ounces silver**
- **675 million pounds zinc**
- **228 million pounds lead**
- **131 million pounds copper***
- Open to expansion to WNW, with edge drill hole Keg-66 returning 30 m @ **51.86 g/t Ag** (+significant Pb-Zn-Cu-Sn-In)
- 25 additional Ag-bearing zones and a further 13 discrete soil geochemical anomalies

Zinc-Lead-Barite Deposit



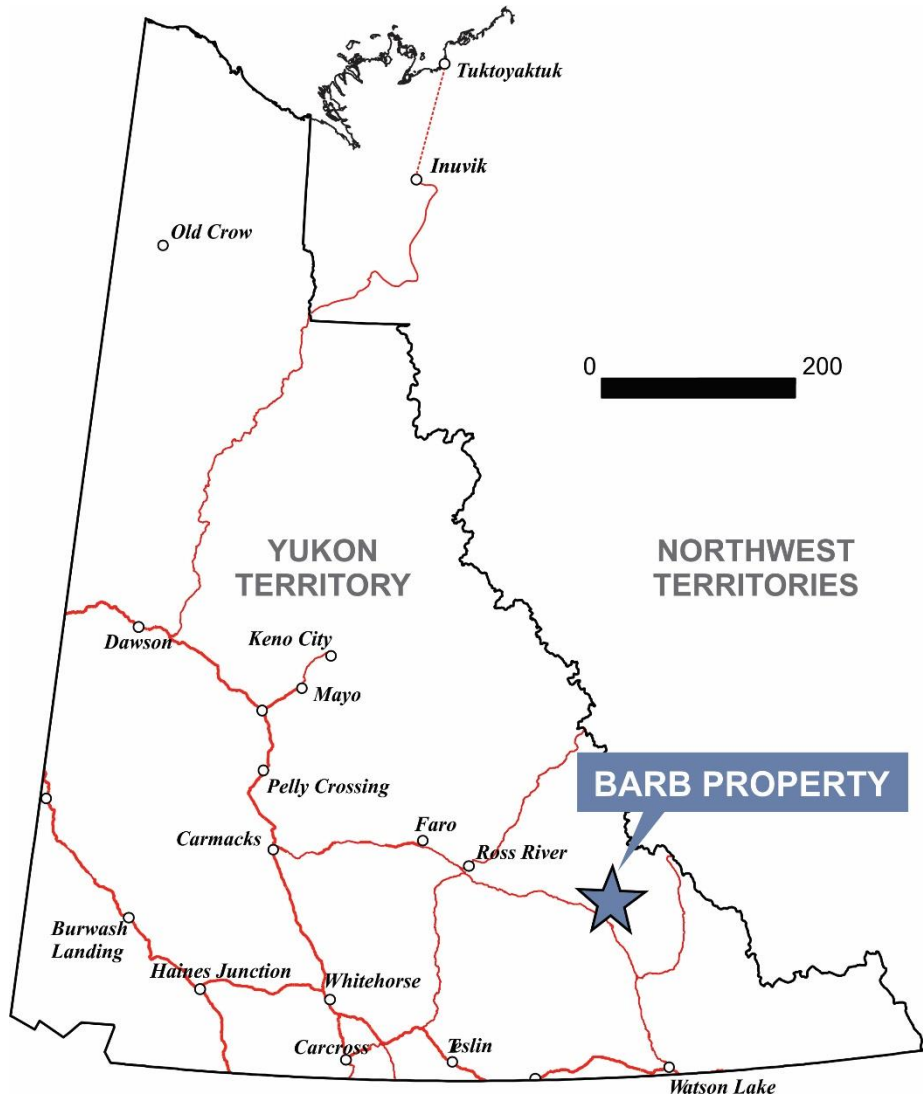
- Located 40 km north of the Alaska Highway in southeast Yukon, 510 km by road from Fort Nelson (railhead) and 670 km from Skagway (tidewater port).
- Four zinc-lead-barite stratabound zones open for expansion.
- The Mel Main Zone hosts an inferred resource of 5.38 million tonnes grading 6.45% zinc, 1.85% lead and 44.79% barite*.

District of Zinc-Lead-Silver Showings – 1% NSR held by Silver Range



- Newly discovered district-scale carbonate-hosted high-grade silver and base metal mineralization
- 22 showings within a 75 sq. km area
- First pass drilling returned up to **310 g/t silver, 8.86% lead and 16.75% zinc** over 18.29 m in the Gully Zone and **0.55% zinc, 15.18% lead and 2133.9 g/t silver** over 2.95 m at the Peak Zone
- Accessible with staked road access to the Dempster Highway
- Hand trench averaged **370.7 g/t silver, 14.8% lead and 2.2% zinc** over 17 m at the Gaynor Zone





- VMS style target located 40 km east of the past producing Wolverine silver-zinc-copper-lead-gold mine.
- Historical drilling, geochemical and geophysical work included the preparation of a mineral resource from 1977 by Sovereign Metals Corporation (Ikona, C) of 533,434 tonnes grading 102.86 g/t silver, 6.1% lead and 4.6% zinc*
- Latest exploration took place in 1998 and several high priority geophysical targets have been identified for future drilling

*This inferred resource was calculated using a polygonal model. The reader is cautioned that this is a historical resource estimate and should not be relied upon. Sufficient work has not yet been completed by Silver Range to categorize this as a current resource; however, data collected by previous operators is considered to be reliable and consistent with industry standards at the time.



- All of our projects are available for option, JV or outright sale
- Terms tailored to individual partner circumstances – from IPO through junior to major company.
- Projects include:
 - Comprehensive digital data bases
 - Target reports outlining drill targets / next steps.
 - Permits and posted bonds for some drill ready projects
- Full technical support for execution & permitting available.



Silver Range Resources Ltd.

1016-510 West Hastings Street

Vancouver, BC, V6B 1L8

Phone: 604-687-2522

Toll Free: 1-888-688-2522

Web: www.silverrangeresources.com

Project inquiries:

Mike Power

Above phone lines or

Cell: 702-972-7496

E-mail: mpower@silverrangeresources.com